

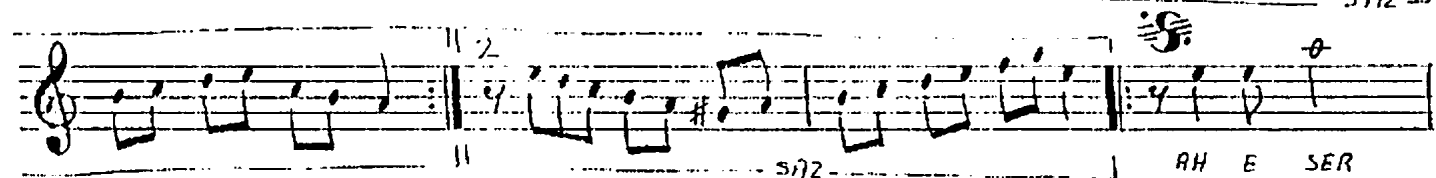
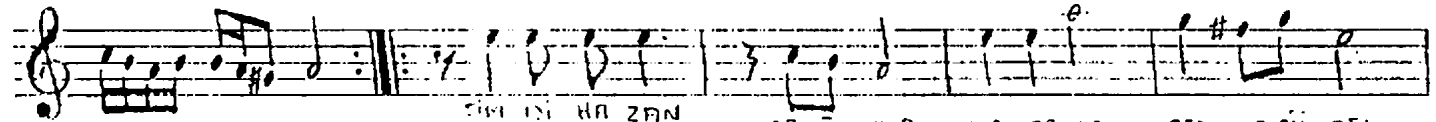
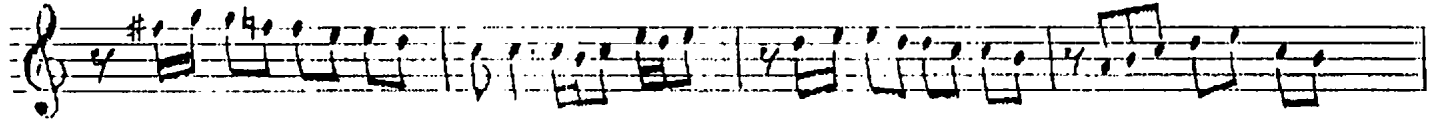
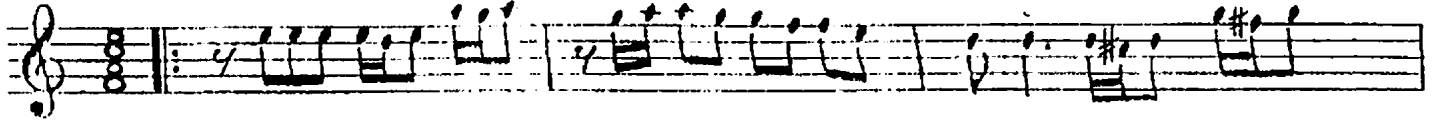
DÜYEK

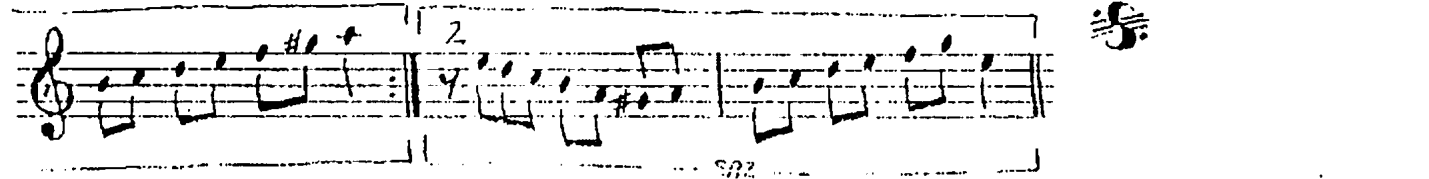
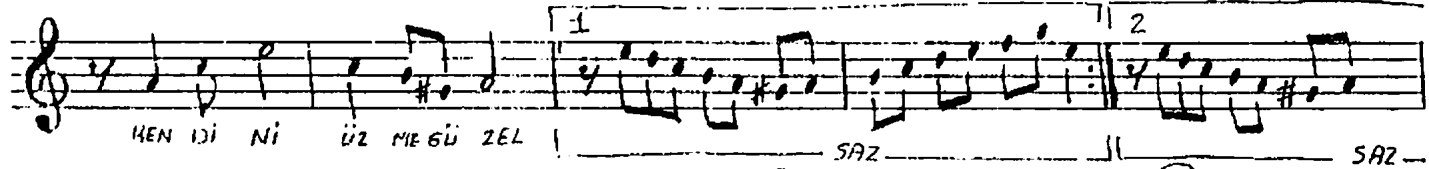
BİLSELİK ŞARKI

Şimdi Hazen çağdır Kırarda Gezmeye Güzel

Güfte: Süleyman Rif EMRE

Beste: Ersin Ali ATLI





Şimdi harzin çadır
Kırlarda gözme güzel
Kuru gül yaprağıdır
Gönülümü ezme güzel

Ah eser hüznün ağlar
Dertliler hüznün ağlar
Solan gül yüzün ağlar
Kendini üzme güzel

Pınarlarda serinle
Solan balâcı dinte
Aşkı kirpiklerinle
Kalbime yazma güzel