

(DERDİ HİCRANINLA HER AN AĞLARIM)

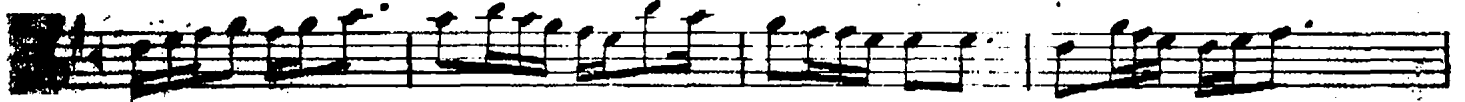
DİLKEŞHAVERAN ŞARKI

Selânikli Ahmed Bey

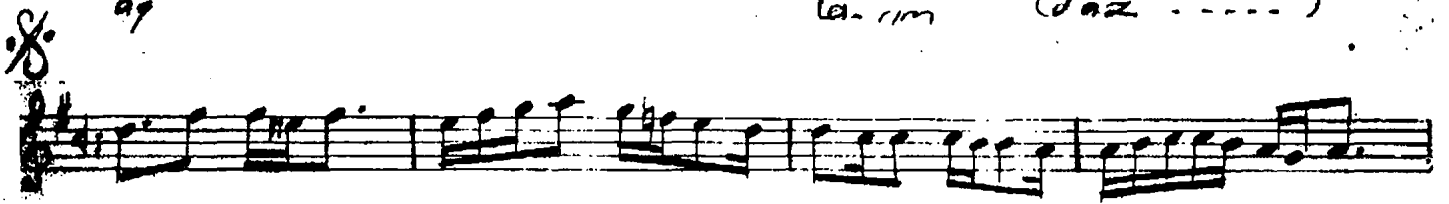
Caruna



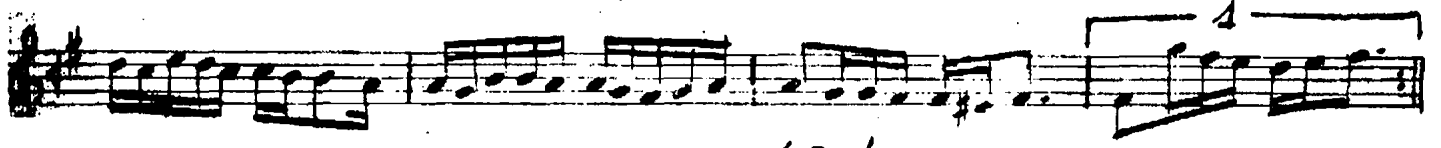
Dar di hic ra min-la her an



ağ la-rım (faz ----)



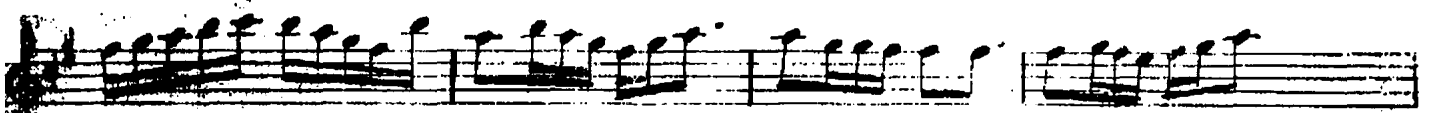
ma te mi has ret le zul met



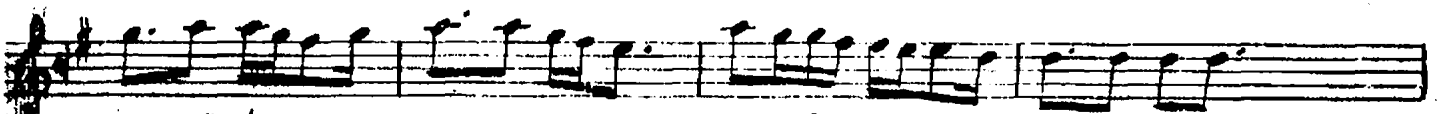
bağ bağ-la-rım



A te şin le kal bî za ri



dağ dağ-la-rım (faz ----)



cu yi ba ri aşk-î-le ben



şâğ şâğ-la-rım (faz ----)

Derdi hicranınla her an ağlarım
Matemi hasretle zulmet bağlarım,
Ateşle kalbi sarı dağlarım
Çay-i bâr-ı aşk ile ben şaşlarım