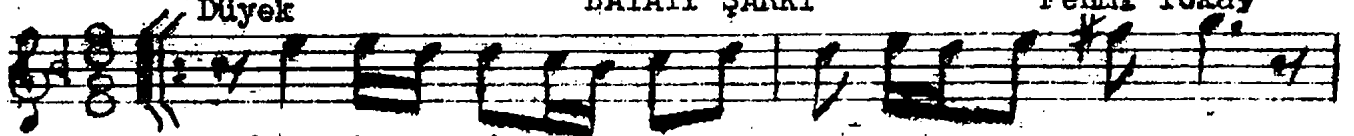


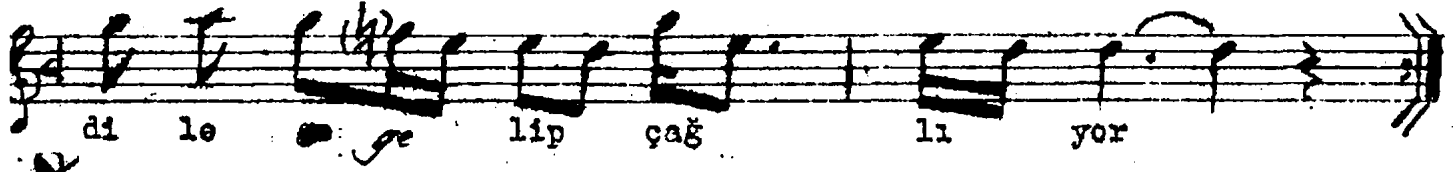
Düyek

BAYATI ŞARKI

Fehri Tokay



Din le cā na se sin de aşk



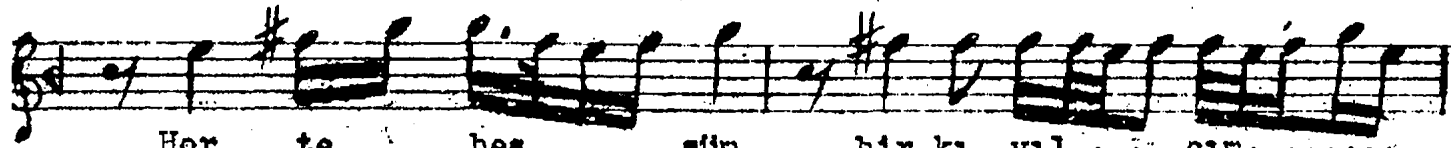
di le lip çağ lı yor



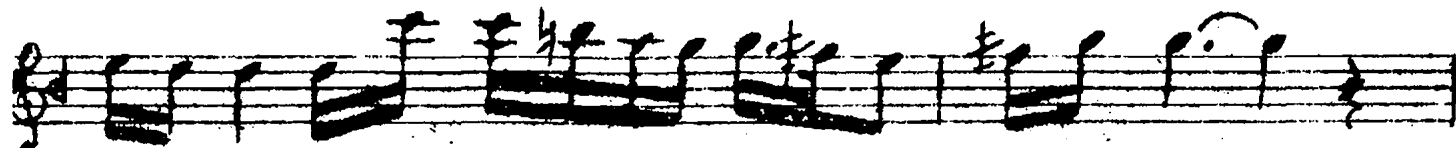
Ben çö zül nek is te dik çe



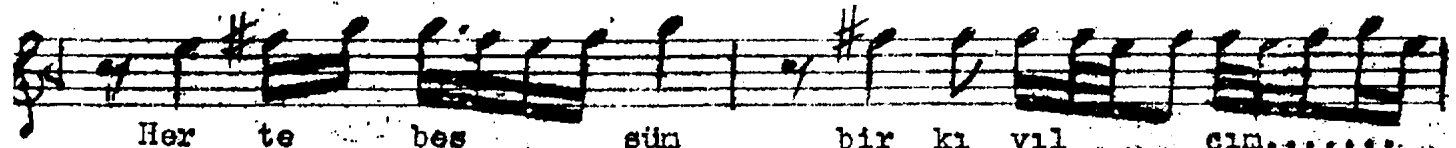
gö nül sa na -bağ lı yor



Her te bes sün bir ki vil ... cım.....



gi bi si nem dağ lı yor

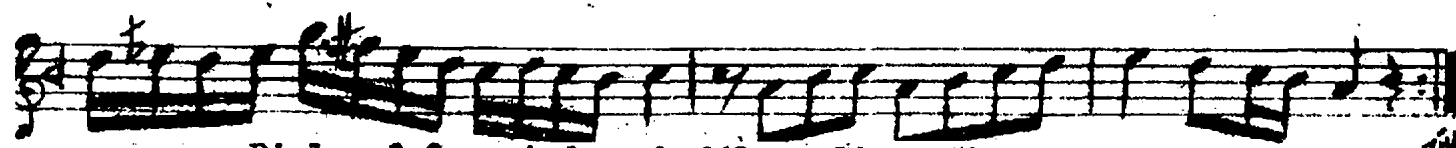
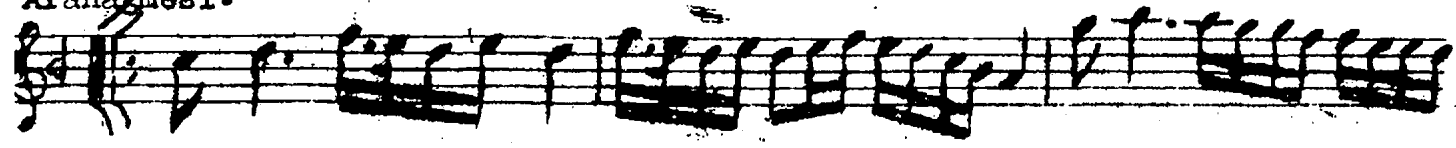


Her te bes sün bir ki vil cım.....



gi bi si nem dağ lı yor

Aranâmesi.



Dinle cānā sesimde aşk dile gelip çağlıyor
Ben çözülmek istediçe gönül sana bağlanıyor
Her tebeşüm bir kıvılcım gibi sinem dağlıyor