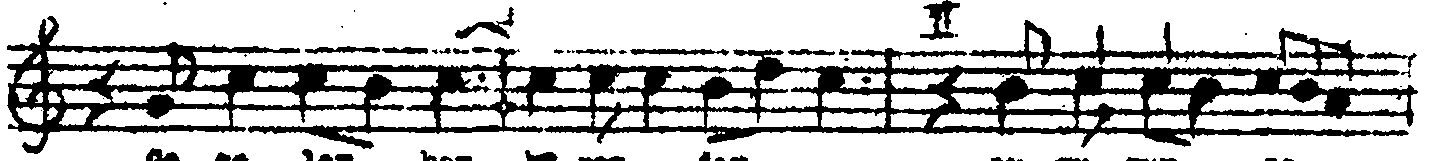
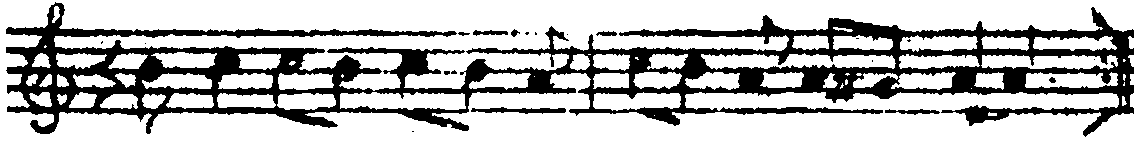
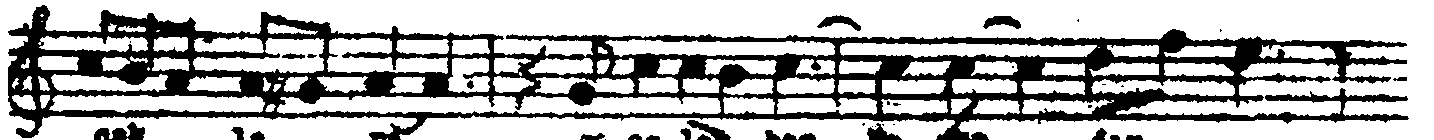




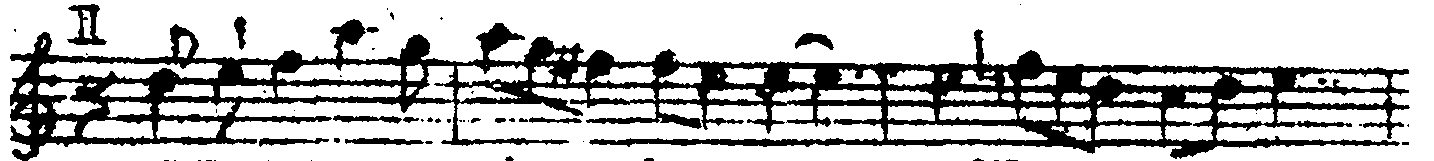
Aru nağme



Ge ce ler ben be şen dar ay vu rur sa
 Öm rü müz bir be şen dar ge ce ler bir



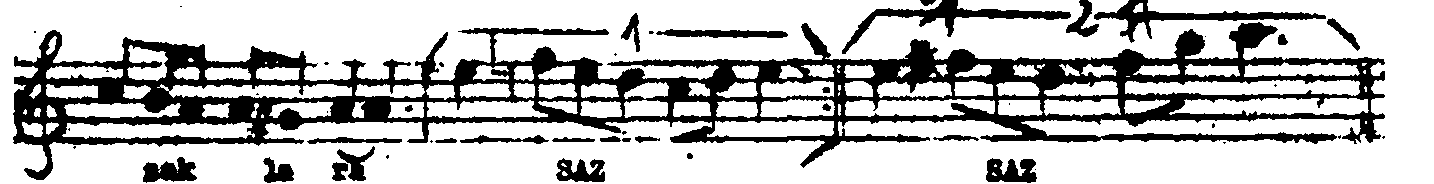
çak la rü ge ce ler ben be şen dar
 di yar dir Öm rü müz bir be şen dar



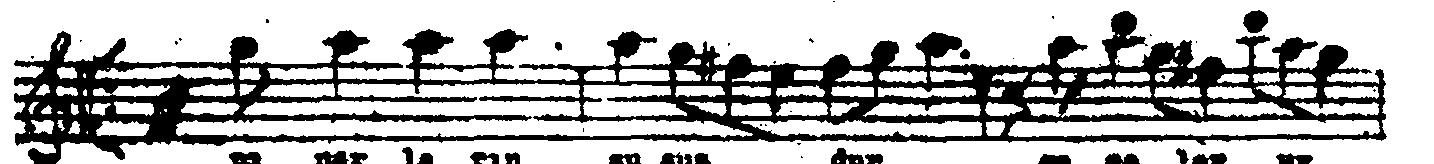
ay vu rur sa çak la rü SAZ
 ge ce ler bir di yar dir



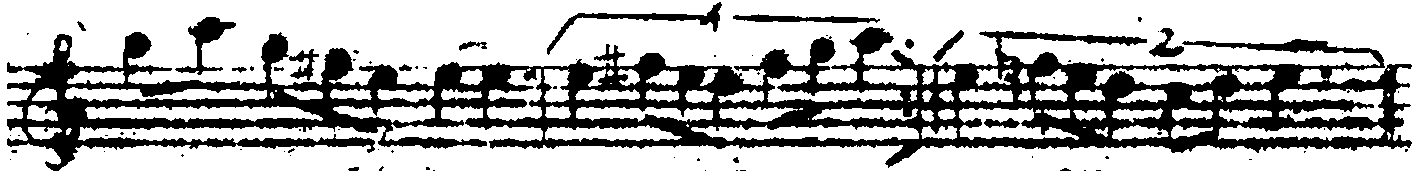
ge çen her nev sin yas dir gelgit me u
 i çin de her şey var dir " " " "



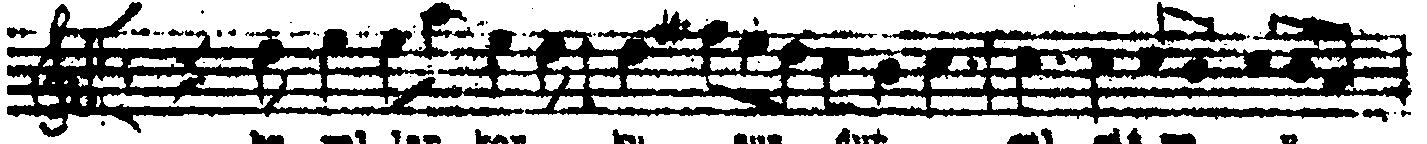
çak la rü SAZ SAZ



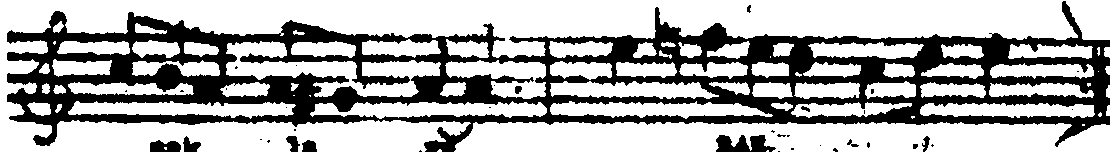
ge nar la rin su sus dur ge ce ler uy
 Ma ğm ay ra dın bir dik son sus a le



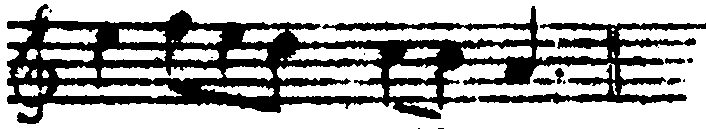
bu sen dur **BAS** **BAS**
se gir dik



bu yol lar kor ku sus dur gel git me u
be yas gün ler ge gir dik " " " "



sek in ş **BAS**
" " "



KARAR

8

İHAMİ

GEÇER HER MEVSİM YARDIR
AY VURUR SAÇAKLARA
GEÇER HER MEVSİM YARDIR
GEL GİTME UZAKLARA

ÖZGÜRÜZ BİR BAHARDIR
GEÇERER BİR DİYARDIR
İÇİNDE HER ŞEY YARDIR
GEL GİTME UZAKLARA

FINANLARIK SÜBESİDİR
GEZELER UYKUSUZDUR
BU YOLLAR KORKUSUZDUR
GEL GİTME UZAKLARA

BU GÜN AYRI DÜN BİRDİR
SONSUZ İLELE GİRDİK
BEYAZ GÜNLER GEÇİRDİK
GEL GİTME UZAKLARA

FERİDUN FAZİL TÜLBENTÇİ