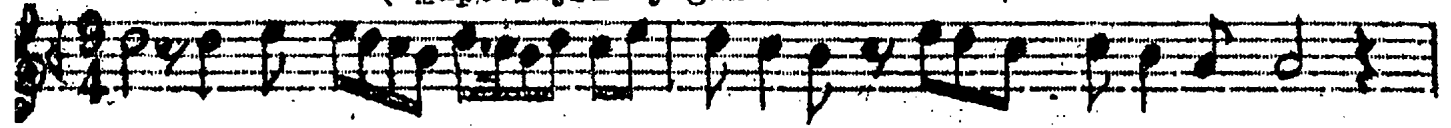
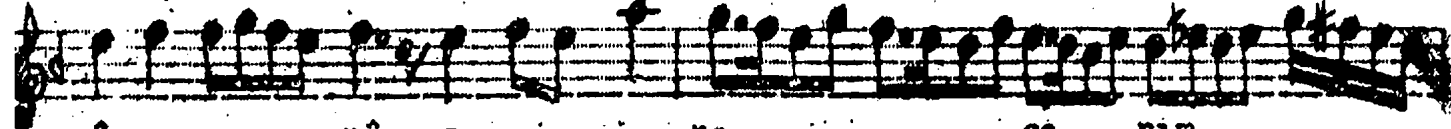


B B Y A T İ  
( Müptelâyım ey gül-i rânâ sana )

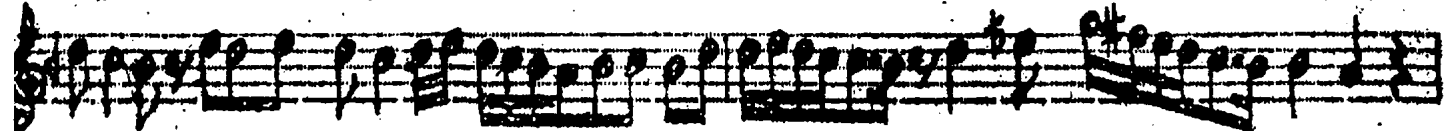
Dede Ef,



Ah nûp te lâ yım ey gü lî



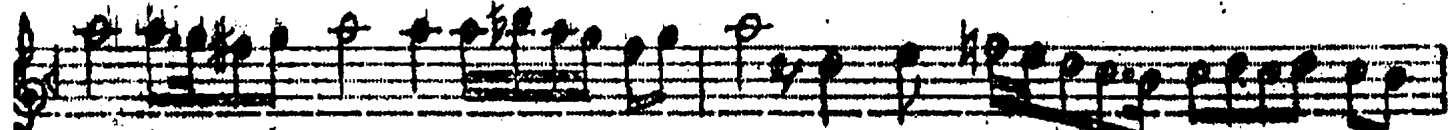
râ nâ sa na ca nım



mür gi ca nım bü lü lî



gey da sa na ca nım



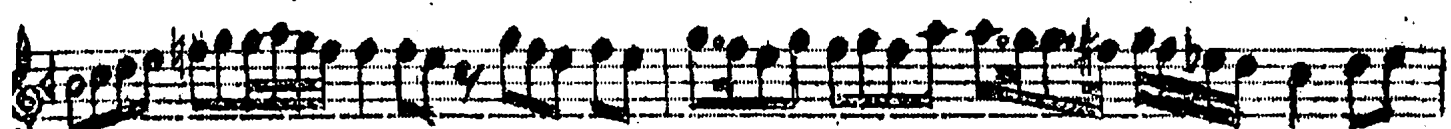
gü l şe ni hüs nün de fer



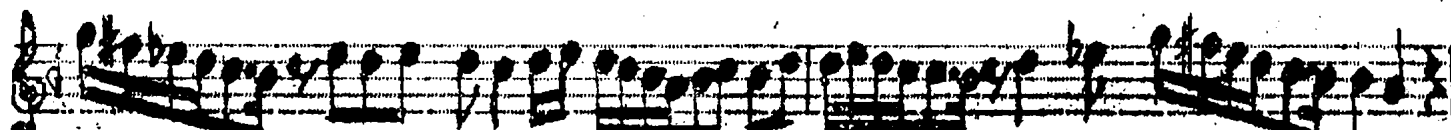
ya dım sa na



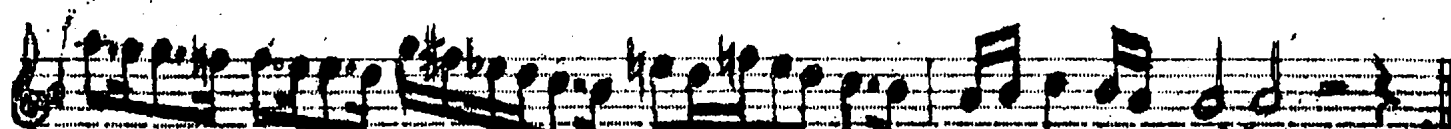
gü l şe ni hüs nün de fer



ya dım sa na ca nım



a şı kım a şık e fen



dım ben sa na

MÜPTELÂYIM EY GÜL-İ RÂNÂ SANA  
MÜRĞİ CÂNIM BÜLBÜL-İ ŞEYDÂ SANA  
GÜLŞEN-İ HÜSNÜNDE FERÂDİM SANA  
ÂŞIKIM ÂŞİK EFENDİM BEN SANA