

CURCUNA

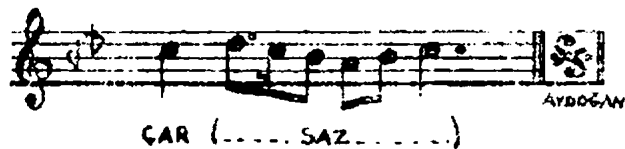
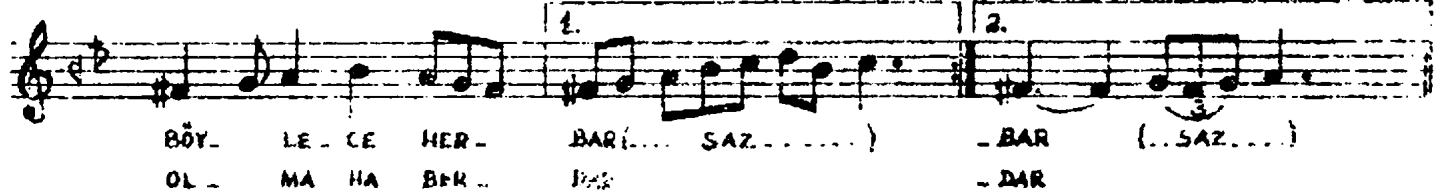
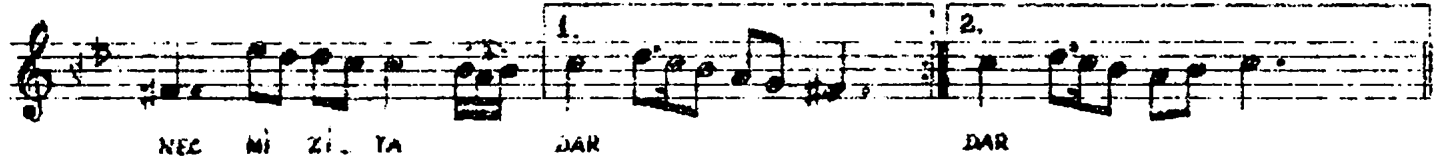
BESTENİ GÂR ŞARKI

LEYLÂ HANIM

(♩=200)

(Neşvem emelim sen iken ey necm-i ziyâdâr)

(1850 1936)



Neşvem emelim sen iken, ey necm-i ziyâdâr,  
Bahtım beni mahrûm ediyor böylece her bâr  
Sabreyleyerek hastesine her dem yine nâcâr  
Ben gieli yanıp mahvolayım, olma haberdâr