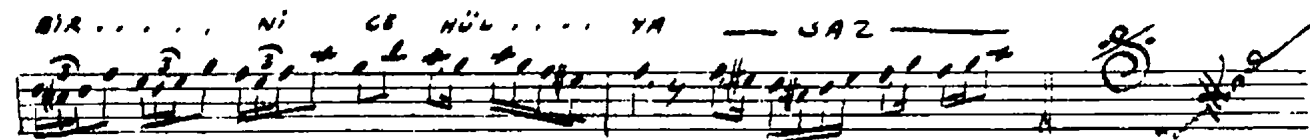
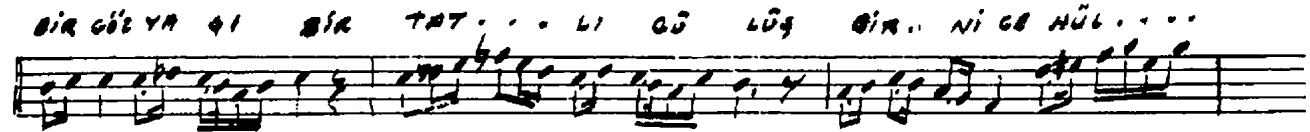
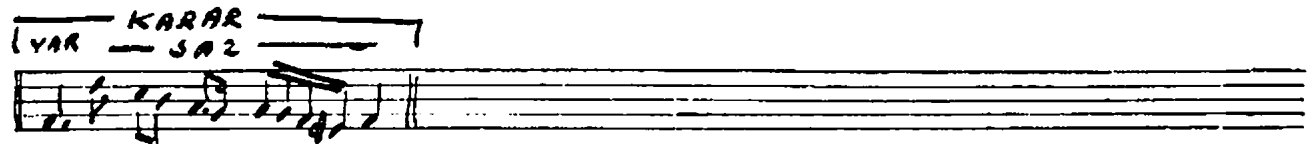
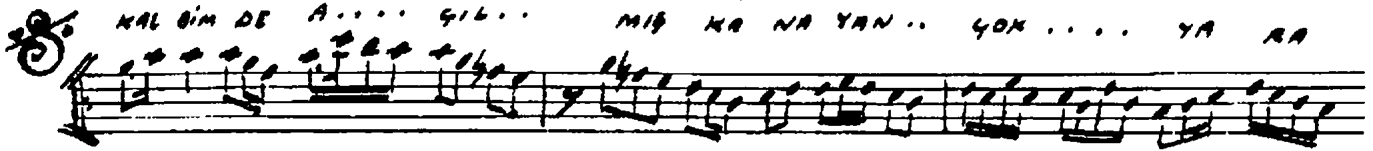
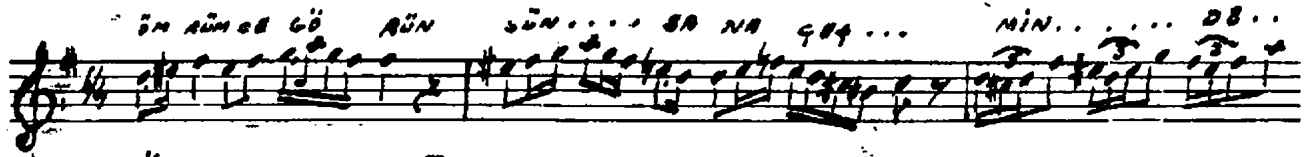


EVLİ SARKI

ŞEYH MURTAZA NAFİZ İZMİR
MÜLLİK YERTE GİNCİ 20-6-1957



Ömrümce görürsün bana şermindeki müye
Kalbinde a ulmuş kanayan çok yaralar var
Bir göz yap bir tatlı gülüş bir nice hülya
Senden bana hatmı ve güzel hatmades var