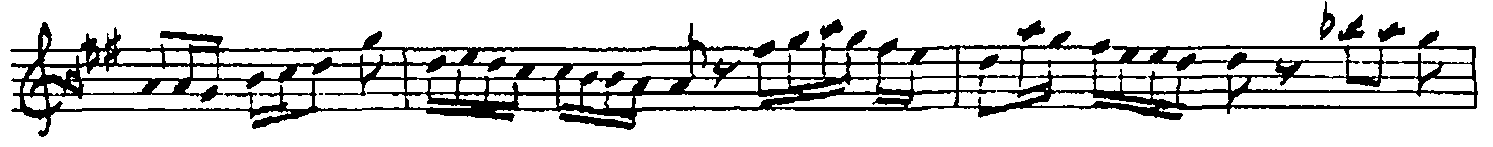
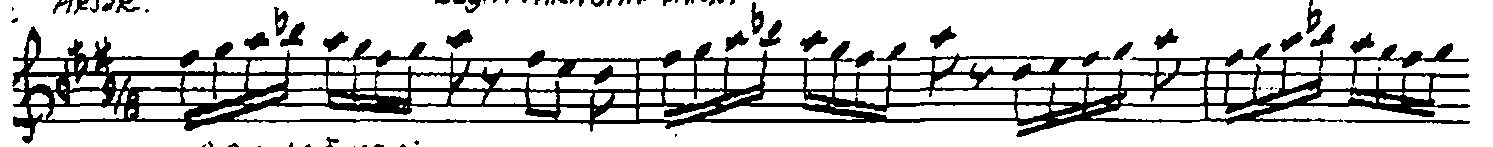


Aksak.

BEYÂTİARABAN SARKI

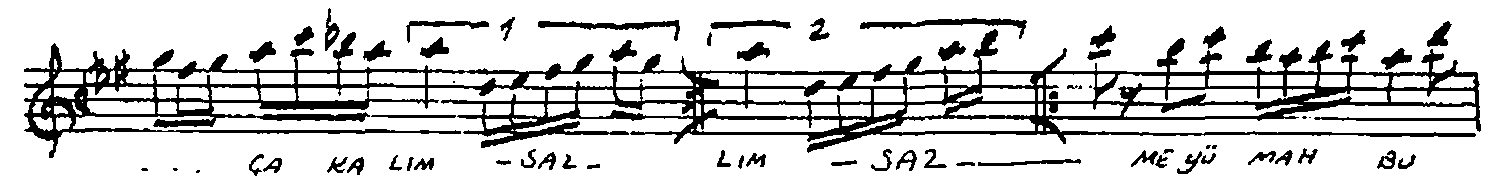
ARANAĞMESİ



SÂ KI YA



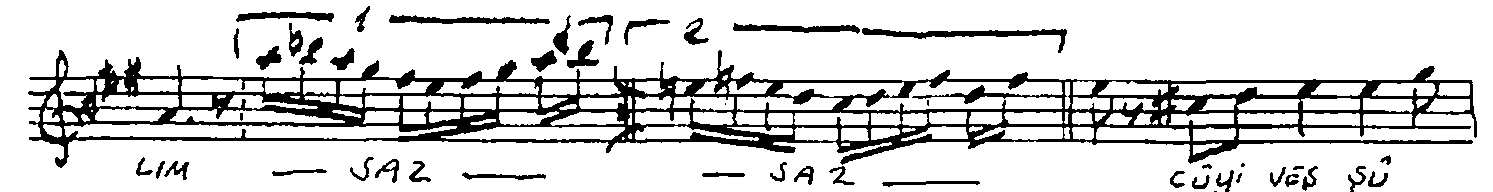
ŞEV Nİ RÜ YİN LE ÇA KA LIM AH



. . . ÇA KA LIM - SAZ - LIM - SAZ - ME YÜ MAH BU



Bİ LE ZEV KE BAKA LIM SAZ - AH BA KA



LIM - SAZ - SAZ - CÜYİ VES ŞÜ




yi SA FÂ YA A KA LIM AH A KALIM - SAZ



CÜYİ VEŞ ŞÜ yi . . . SA FA YA A KALIM AH --



. . . A KA LIM SAZ MEYÜ MAH BÜ BİLİ ZEV KE . . .



. . . BA KA LIM AH BA KA LIM - SAZ -



2 İKİNCİ SARKIYA
LIM - SAZ