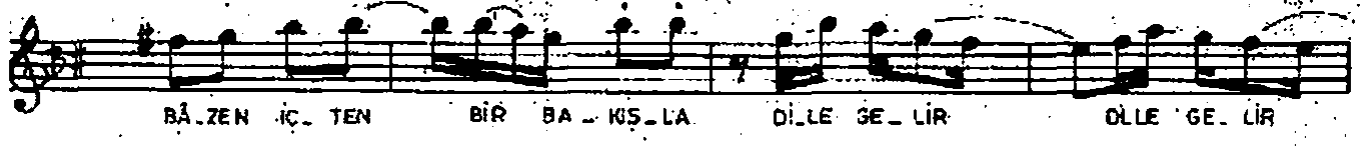
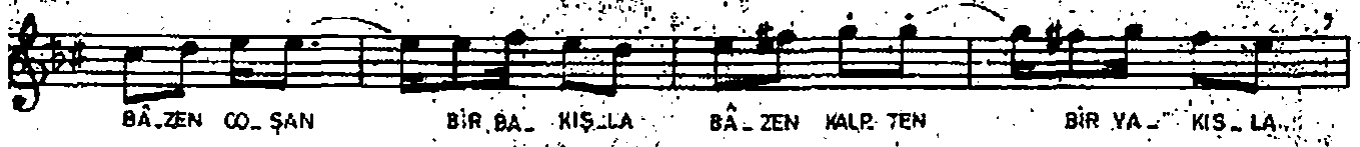
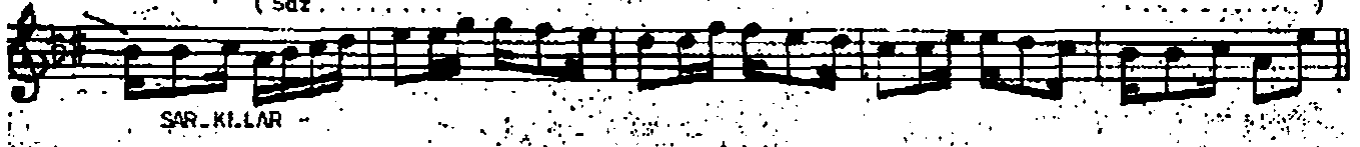
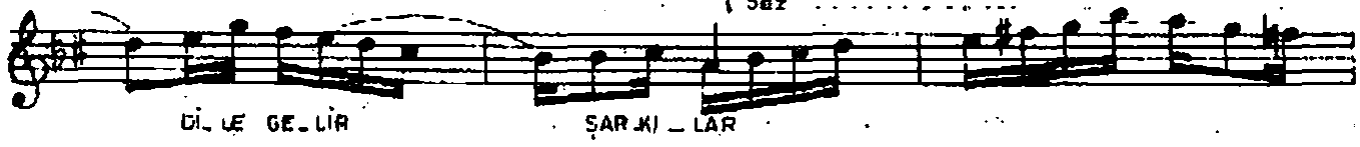


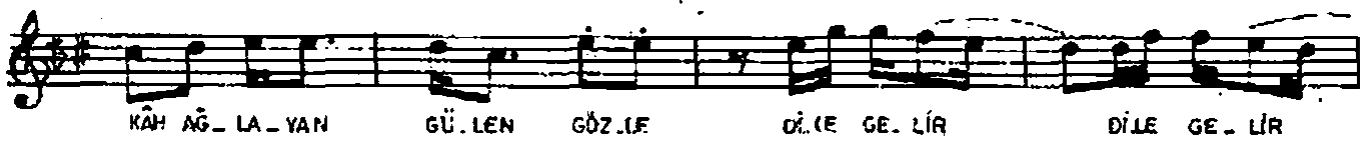
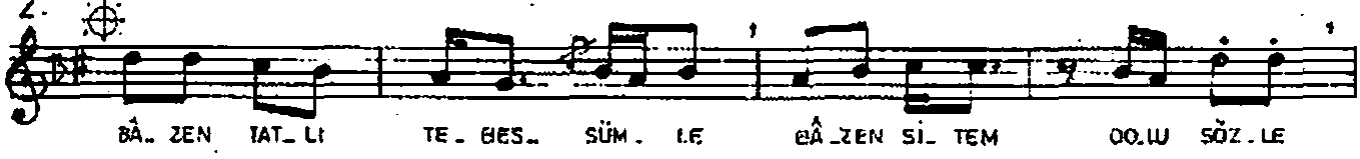
( Saz ..... )



( Saz ..... )



2.



DİLE GE LİR SARKI LAR

MEK TUP İ LE GUR BET EL DEN YA NIK YA NIK

VU RAN TEL DEN AŞK DO LU DE LI GÖ NÜL DEN

DİLE GE UR DİLE GE LİR DİLE GE LİR SARKI LAR

DİLE GE UR DİLE GE LİR DİLE GE LİR SARKI LAR

DİLE GE UR DİLE GE LİR DİLE GE LİR SARKI LAR

Uysal

—1—  
 BÄZEN KİS BÄZEN SAHARLA  
 DELİ EŞEN BİR RÜZGARLA  
 BÖLÜK BÖRÇÜK ANILARLA  
 DİLE GELİR SARKILAR  
 BÄZEN COŞAN BİR AKIŞLA  
 BÄZEN KALPTEN BİR YAKIŞLA  
 BÄZEN İÇTEN BİR BAKIŞLA  
 DİLE GELİR SARKILAR.

—2—  
 BÄZEN TATLI TEĞESSÜMLE  
 BÄZEN SİTEM DOLU SÖZLE  
 KAĞ AĞLAYAN GÜLEN GÖZLE  
 DİLE GELİR SARKILAR  
 MEKTUP İLE GURBET ELDEN  
 YANIK YANIK VURAN TELDEN  
 AŞK DOLU DELİ GÖNÜLDEN  
 DİLE GELİR SARKILAR.