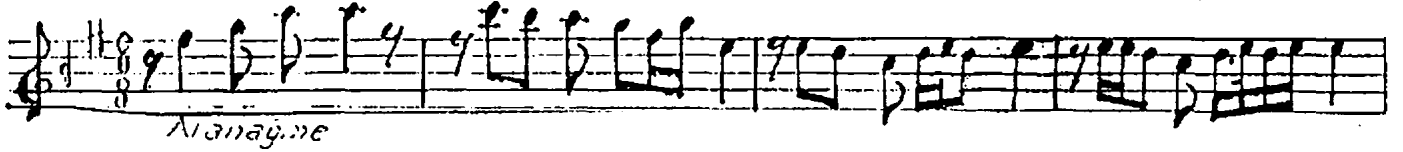


:DÜYEK

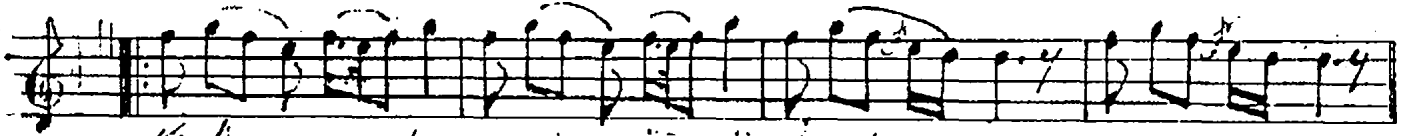
ŞERDANIYE ŞARKI.
MENEKŞE

Beste: Mümin SALMAN
Güfte: Karacaoglan

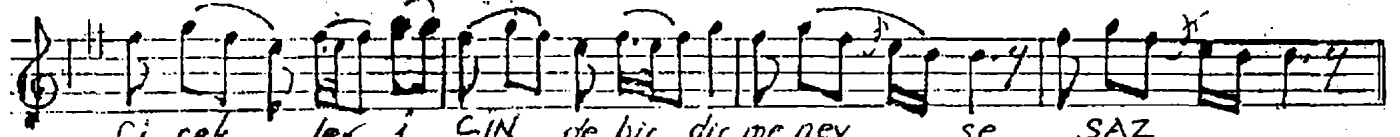
♩ = 136



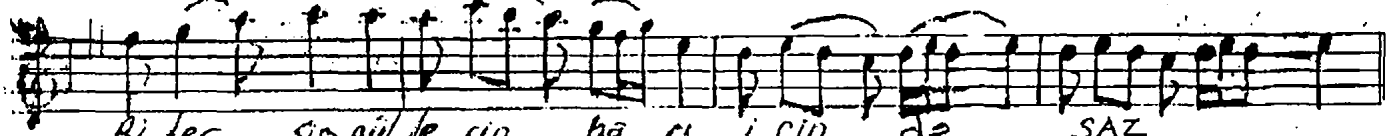
Alanağane



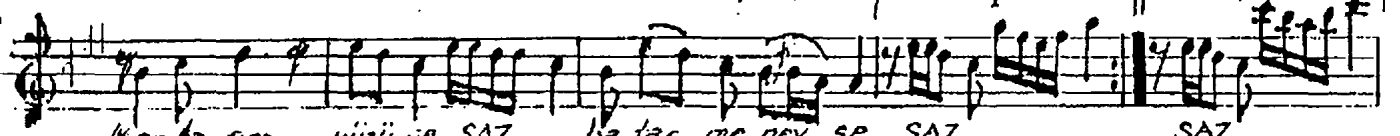
Kadır mev lam se ni öğ müş ya rat miş SAZ



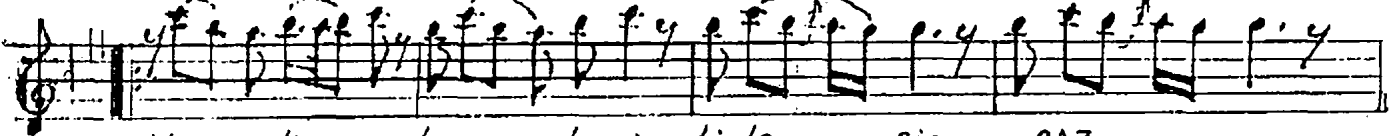
Çi çek ler i ÇİN de bir dir me nev şe SAZ



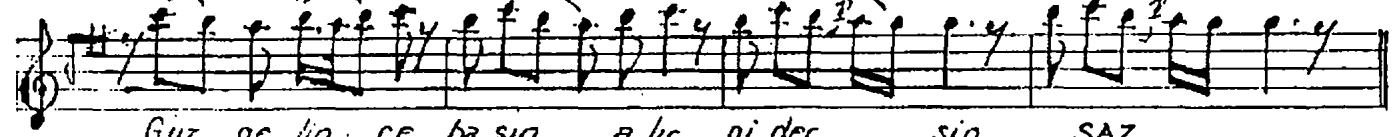
Bi ter sim gül le rin ha ru i çin de SAZ



Kor ka rım yüzü ne SAZ. Ba tar me nev şe SAZ SAZ



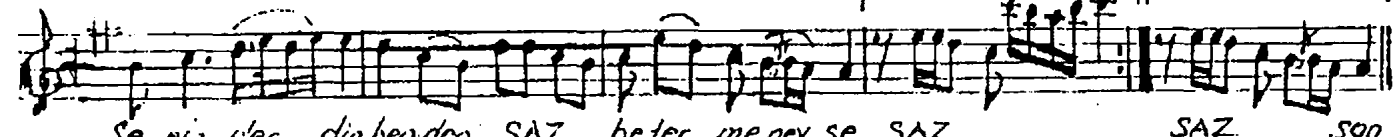
Yaz ge lin ce he ves le nir bi ter sin SAZ



Güz ge lin ce ba şın a lır gi der sin SAZ



Yav ru ni çin boy nu bü kük ge zer SIN SAZ



Se nin der din ben den SAZ. be ter me nev şe SAZ SAZ Son

Kadır mev lam seni öğmüş yaratmış
Çiçekler içinde bidir menekşe
Biterisin güllerin harı içinde
Korkarım yüzüne batar menekşe

Yaz gelince heveslenir bitersin
Güz gelince başın alır gidersin
Yavru niçin boynu bükük gezersin
Senin derdin benden beter menevşe