

HİCAZ ŞARKI

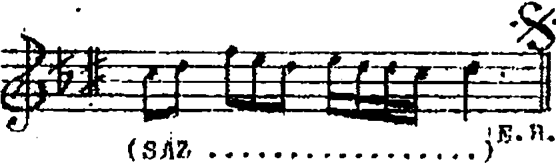
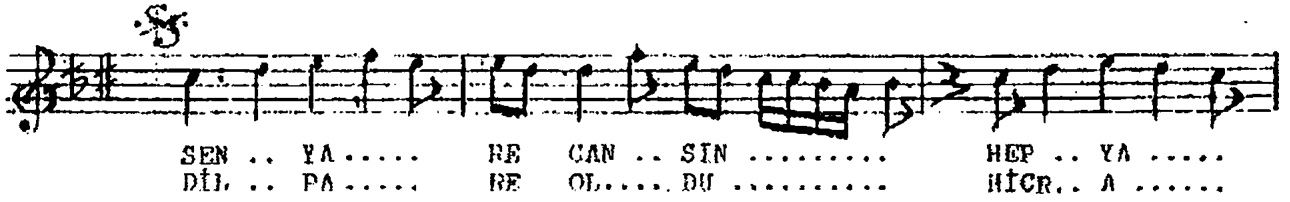
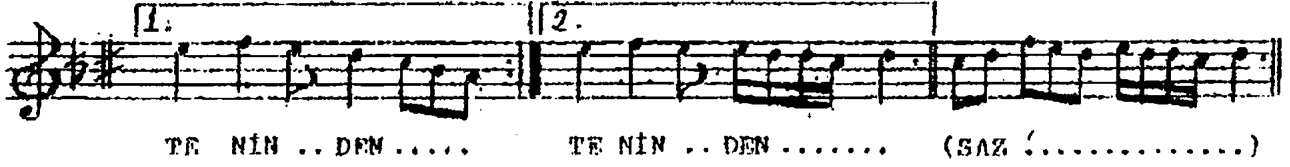
Gülte ve Beste

Usulü: CURCUNA

(Cânâ nihânsin cân ü tenînden)

AHMET ÜZEL

(♩ = 176)



CÂNÂ NİHÂNSİN CÂN Ü TENİNDEN  
SEN YÂRE CANSİN HEY YÂREHİNDEN  
BEN CÂN BULURUM HER AN ELİNDEN  
DİL PÂRE OLDU HİCR ÂLEMİNDEN