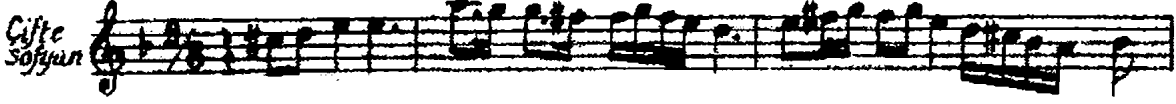


Gülüşerek o yollardan

Bimen Efendi'nin

gü lü şe rek o yol lar dan ge çer dik ki



şın

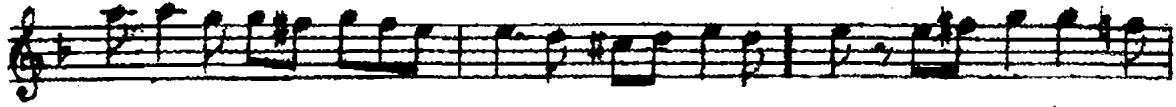
gü lü şe rek o yol lar dan



ge çer dik ki

şın « SAZ »

ner de şim di



gö nül

le ri ya kan

ba ki

şın

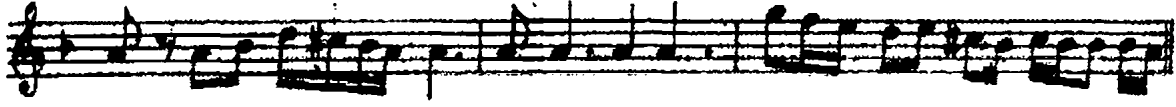


ner de şim

di gö nül

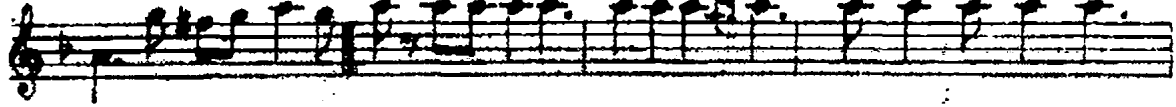
le ri ya kan

ba ki



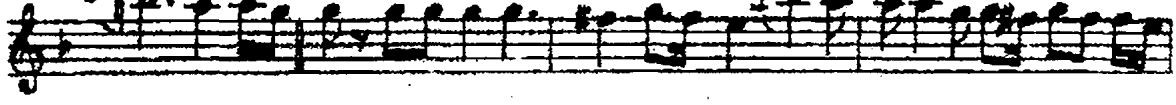
şın

ay rı lır ken el le ri mi o bı ra ki



şın

ay rı lır ken el le ri mi o bı ra ki



şın

şın « SAZ » Aranağme

