

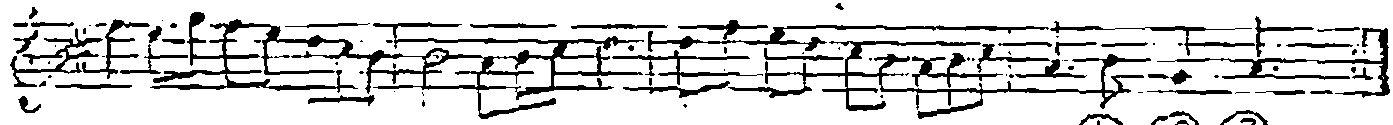
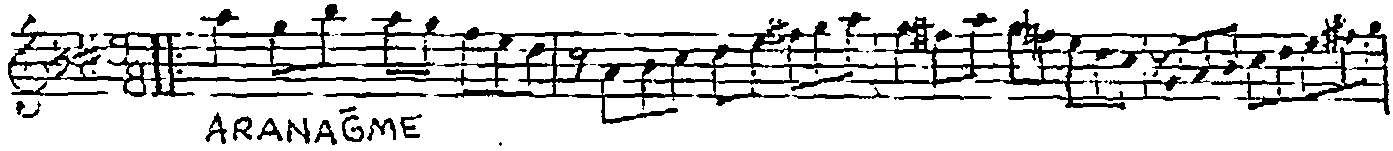
HICAZ ŞARKI
HER GÜN HER AN ÖZLEDİĞİM

SURE:

AKSAK (D=225)

BESTE: METİN EVERES

GÜFTE: JILK'AN SAN



① ② ③

HER GÜN HER AN ÖZLEDİĞİM DOST DÜŞMANDAN GİZLEDİĞİM

HOLLARINI SAZ GÖZLEDİĞİM EN SONUNDA BULDUM SENİ

- SAZ -

1) GÖZYAŞIN DA SEVİNÇÖLAN DAMLA DAMLA KALBEDÖLAN

BENDE AÇIP BENDESÖLAN EN SONUNDA BULDUM SENİ SON

MIS RĀ MIS RĀ YARATTIĞIM ŞARKILARLA ANLATTIĞIM

YÜREĞİM DE YAŞATTIĞIM EN SONUNDA BULDUM SENİ

A handwritten musical score on a single staff. The notation is in treble clef with a key signature of two flats (B-flat and E-flat) and a common time signature (C). The melody consists of several measures of music, including quarter notes, eighth notes, and a final cadence. Below the staff, the lyrics are written in Turkish: "HAYATI MI SAĞ RENKLEN DİREN EN SONUNDA BULDUM SE Nİ".

B.T. 21.10.1930 (N. 5)

~~27.3.1991
BUJERE
SÜZ~~