

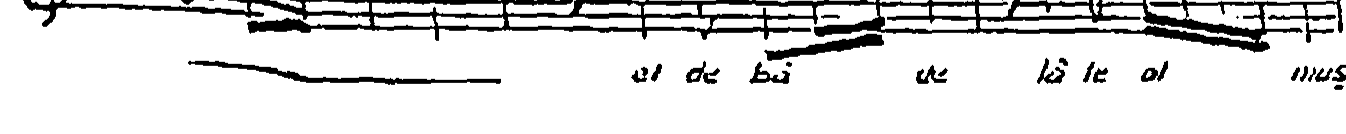
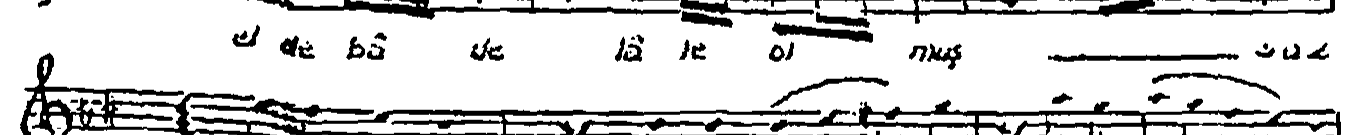
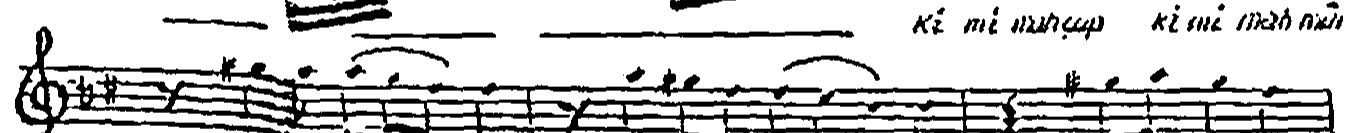
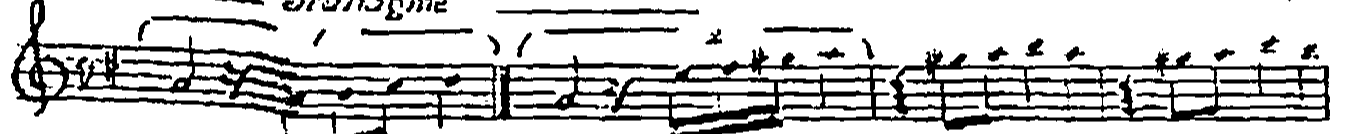
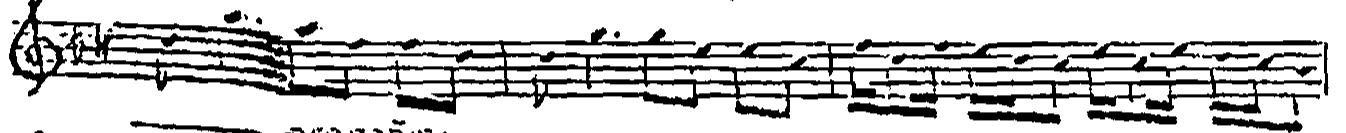
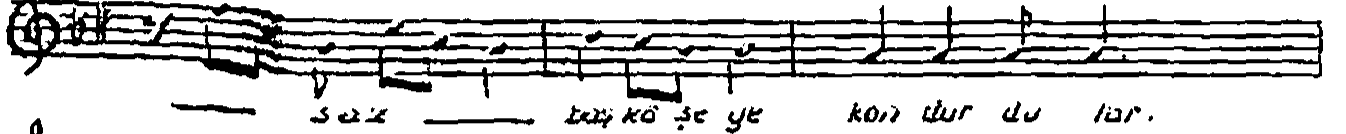
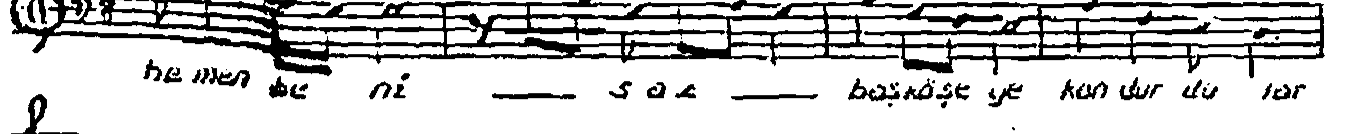
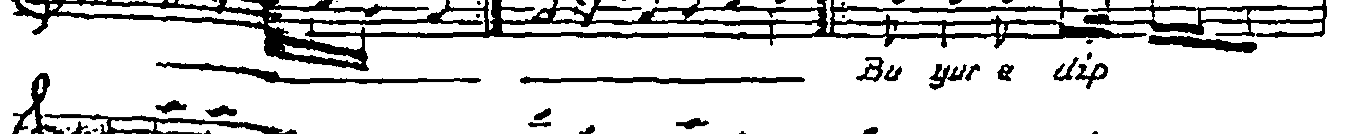
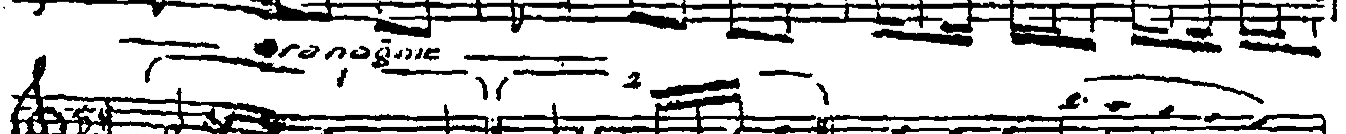
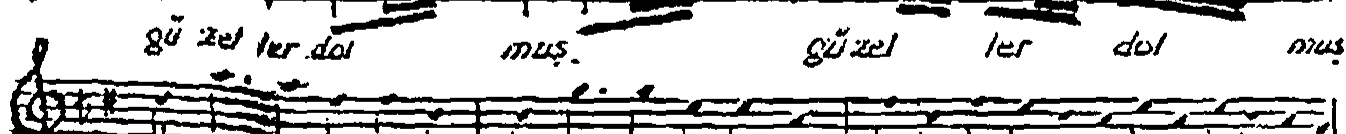
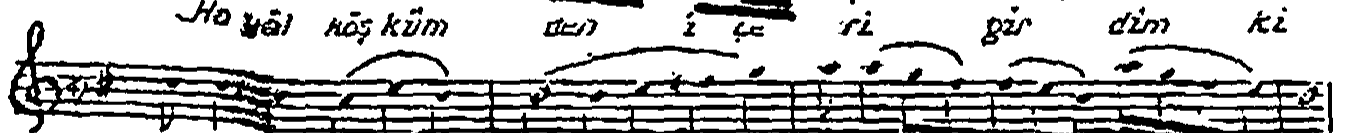
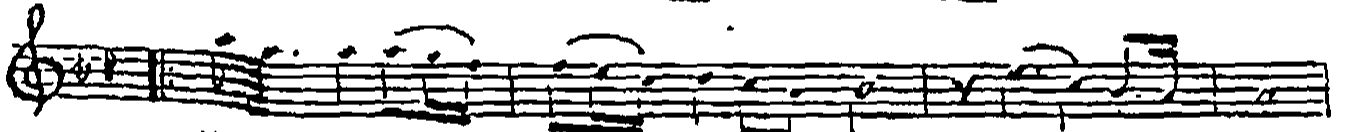
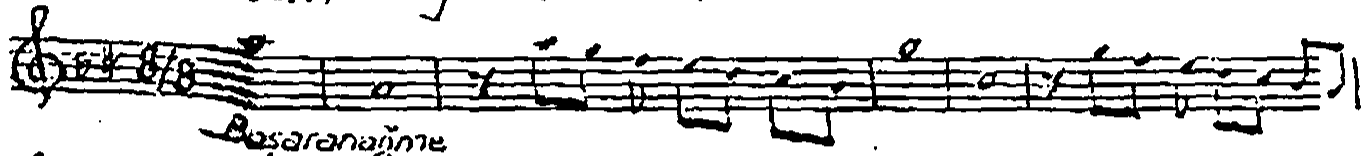
T R T
Müzik Dolresi 6117.

-T.S.M.
Düyük-Semâi

Süre: 06:38 8.144 Hayâl köşkünden içeri...

Güfte-Büste

Orhan KIZILSANAĞ



aranağme
 i çir di ler o bā de den
 saz dî vā ne ye dān dūr dū ler saz
 dî vā ne ye dān dūr dū ler .
 semāi' ye giriş saz
 Dil le rin de şe ker la Kum
 saz Du dak la rin da gūl gon ca
 saz ve nūs baş
 gū ver cın ba kış saz ca lıp rak set ti ler
 on ca saz yor gun uy ku suz
 düş tū ler sus tu lar sa bah o lun ca saz ve git
 ti ler su gūn lū nū Ah! vî rā ne ye dān dūr dū ler