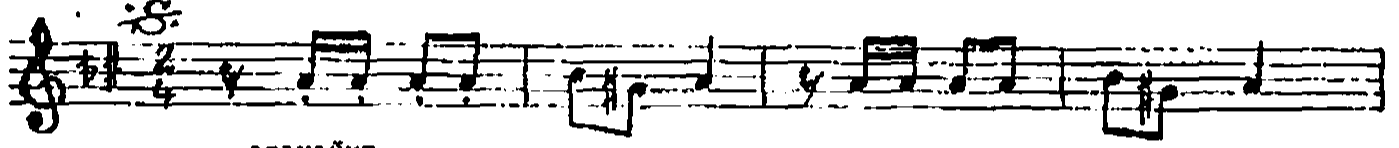


ZİRGÜLELİ HİCAZ ŞARKI
-BAKIŞLARIN KIVILCIM-

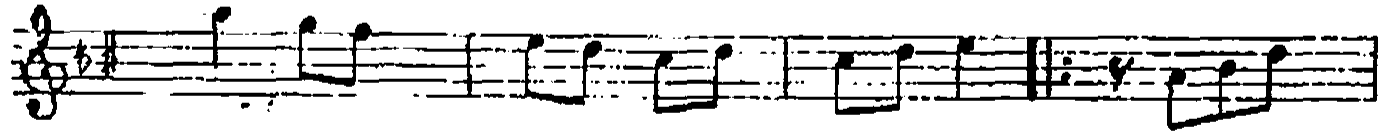
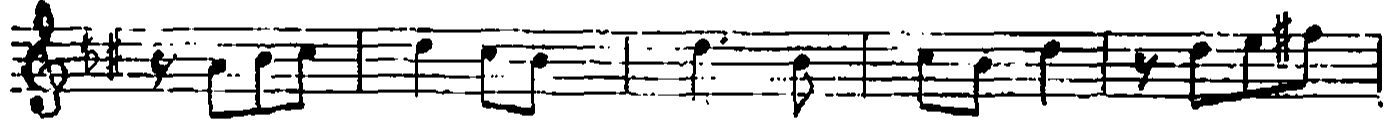
J. 112

SÖZ VE MÜZİK: ALİEDDİN YAVAŞCA

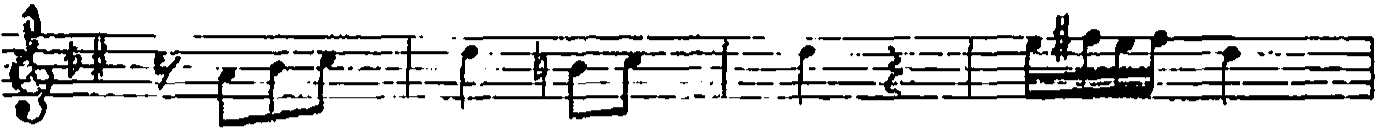
USÛLÜ: N. SOPYAN



-ARANAÇHE-

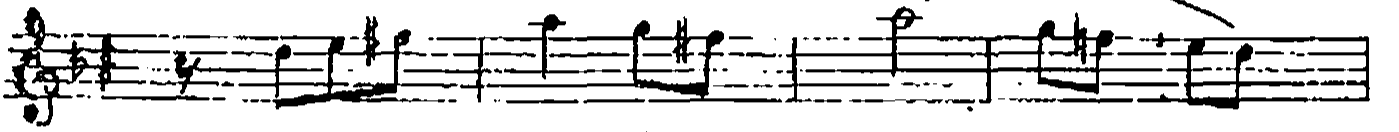


BA KIŞ LA RIN KI VIL CIM -SAZ-----

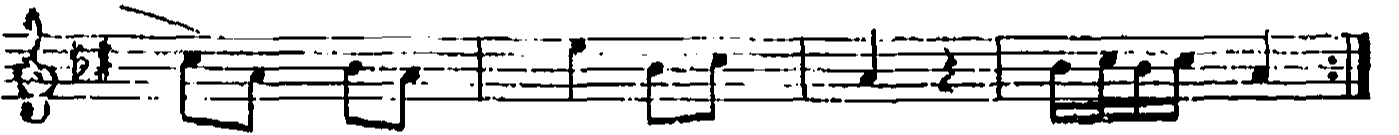


RU HA A LEV SA ÇI YOR

-SAZ-----

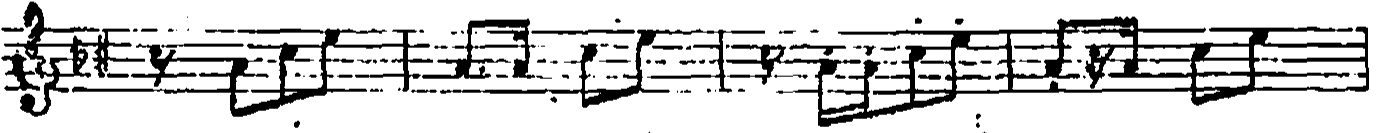


KİR PİK LE Rİ NİN U CU



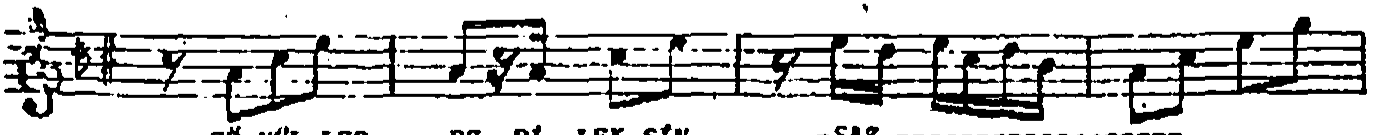
KALP TE YA RA A ÇI YOR

-SAZ-----



GÜ ZEL SİN BİR ME LİK SİN

-SAZ-----



GÖ NÜL LER DE Dİ LİK SİN

-SAZ-----

SEN DE BA' HAR YA ŞT YOR

SE VİH Lİ BİR Çİ ÇEK SİN BİR Çİ ÇEK SİN

BAKIŞLARIN KIVILCIM
RUHA ALEV SAÇIYOR
KIRPIKLERİNİN UCU
KALPTE YARA AÇIYOR

ÇÖZLERİN KALİNE OK
KALBİMDE BAŞKASI YOK
AŞKINLA YANIYORUM
SEVİYORUM SENİ ÇOK

HERGÜN SENİ ARARIM
HASRETİNLE YANARIM
DELİ DİVANEN OLDUM
KALHADI BAK KARARIM

GÜZELSİN BİR HELEKSİN
GÖNÜLLERDE DİLAKSİN
SENDE BAHAR YAŞIYOR
SEVİMLİ BİR ÇİÇEKSİN