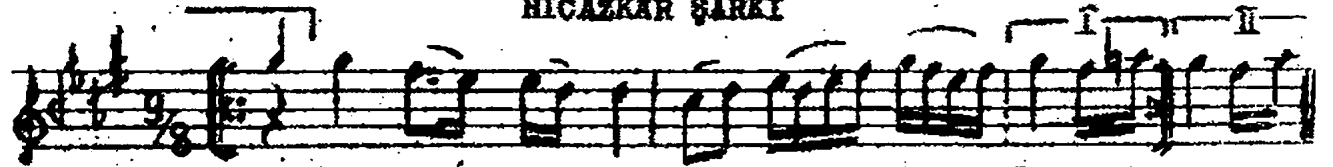


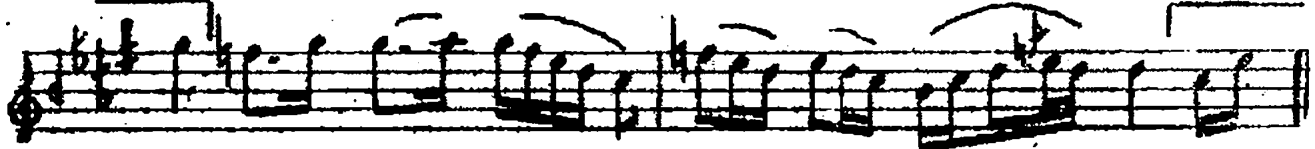
U. Akeak

HICAZKAR ŞARKI

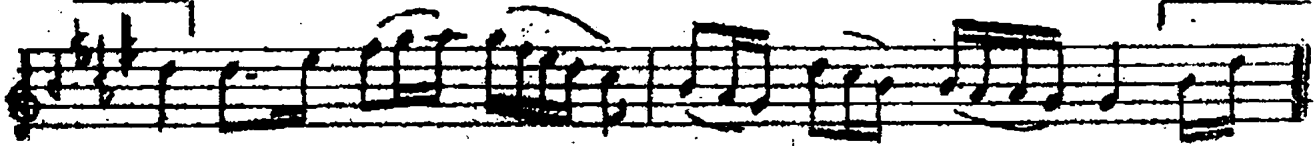
Hacı Arif Bey



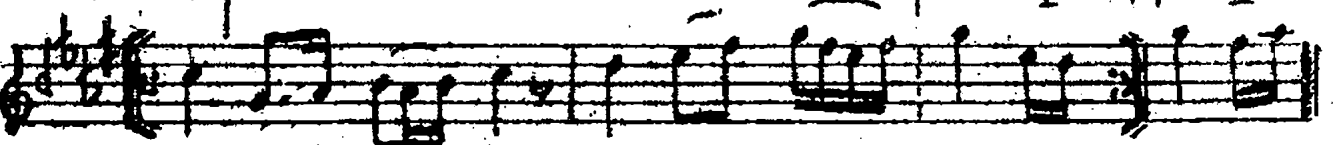
Bir dil ve ger nevr res te dir(SAZ) dir(SAZ)  
bül bül gi bi muh rik se da



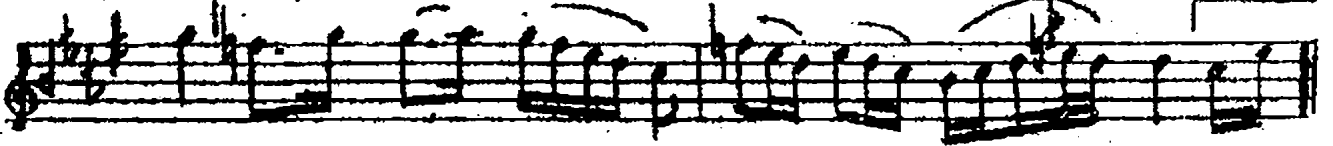
Zül fû ne ol dil bes te dir--SAZ--  
En da mı dir na zik e da



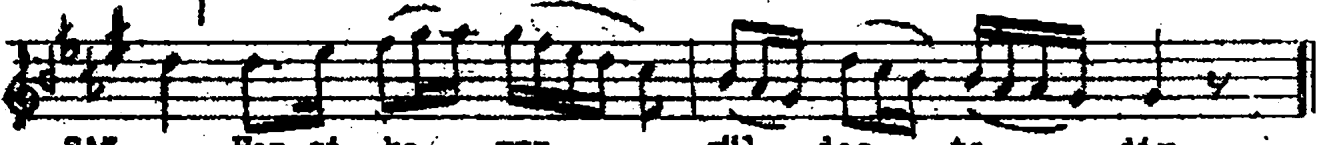
Zül fû ne ol dil bes te dir--SAZ--  
En da mı dir na zik e da



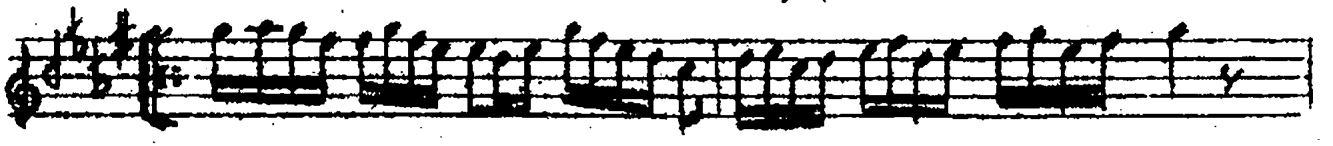
Söy le ne ge sa yes te dir- SAZ - dir- SAZ-  
Et va ri na can lar fe da da



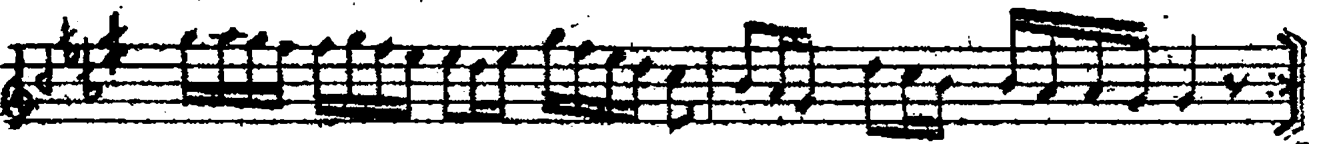
Hep si he man gül des te dir- - -  
Zül fû ne ol dil bes te dir



SAZ- - - Hep si he man gül des te dir  
Zül fû ne ol dil bes te dir



Arasğme



Bir silveger nevr estedir  
Zülfüne ol dil bestedir  
Söylemeğe şayestedir  
Hepsi heman güldüstedir.

Bülbül gibi muhrik seda  
Endamıdır nazik eda  
Etvarına canlar feda  
Zülfüne ol dil bestedir.