

TUNA KUTLU BAKI

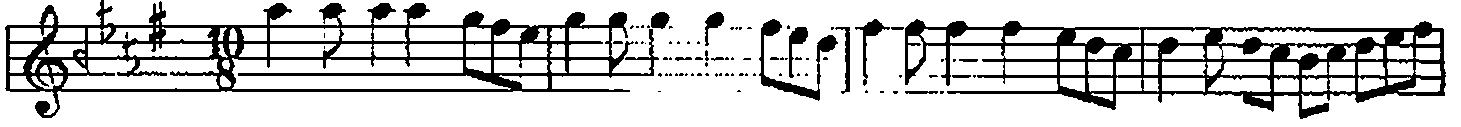
T. S. M. D. N. 20273

# HİCAZKÂR ŞARKI

(BİR HİCAZKÂR ŞARKIDIR..)

GÖFTE: YILMAZ KARAKOYUNLU  
BESTE: ÂMİR ATEŞ

CURCUNA

♩=160-4<sup>100</sup>

ARANAĞME



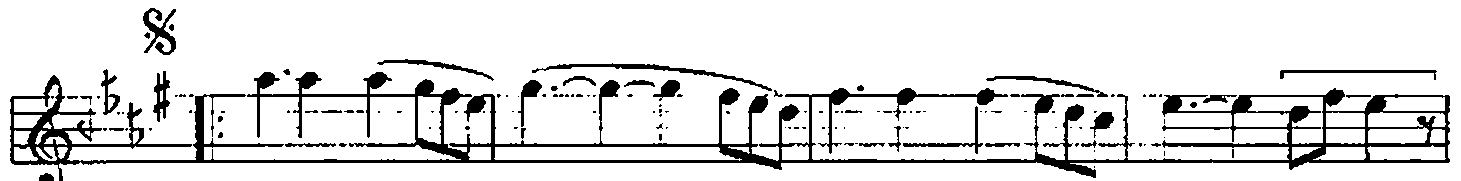
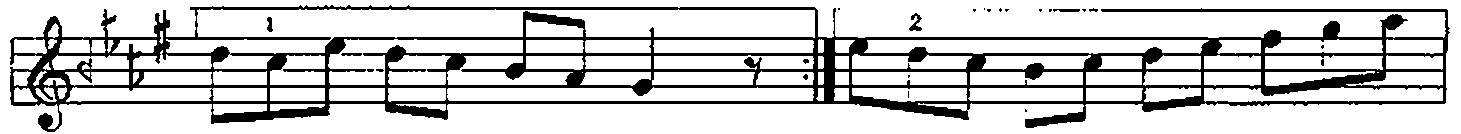
BİR Hİ CAZ KÂR ŞAR KI DİR HEP



GÖZ LE RİN DE İLK BA HAR GÖZ LE RİN DE İLK BA HAR



(SAZ)



SANKI SEN SİZ BİR HÜ ZÜN DÜR (SAZ)  
CANLA CÂ NAN AY RI DÜŞ MÜŞ



BAHÇE LER DE GON CA LAR BAH ÇE LER DE GON CA LAR  
BAHÇE AR TIK TÂ RÜ MÂR BAH ÇE AR TIK TÂ RÜ MÂR

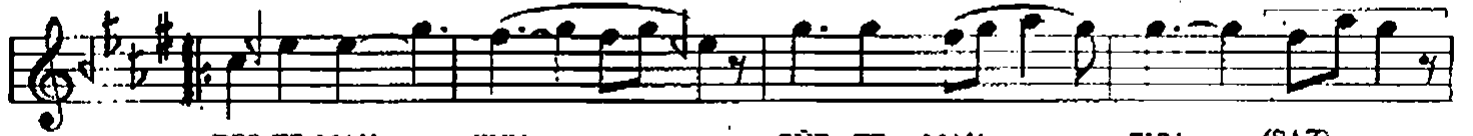
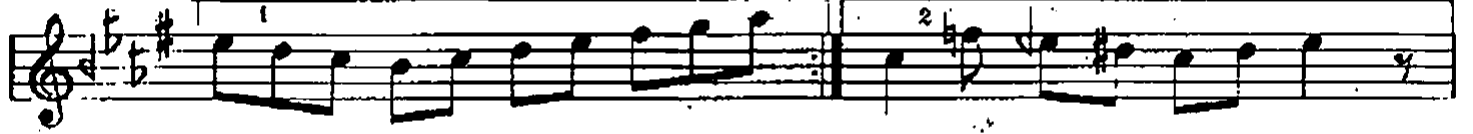
/.

HİCAZKÂR ŞARKI  
(BİR HİCAZKÂR ŞARKIDIR...)  
(ŞARKININ 2. SAYFASI)

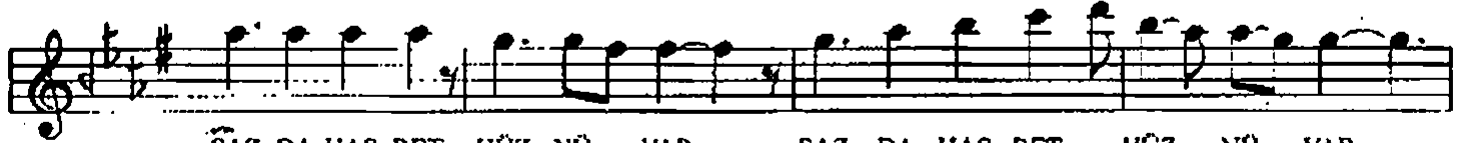
GÜFTE: YILMAZ KARAKOYUNLU  
BESTE: ÂMİR ATEŞ



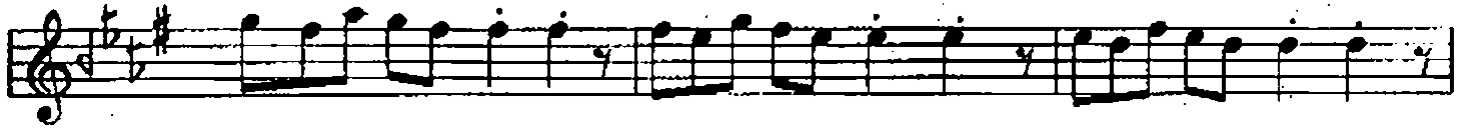
(SAZ)



BES TE MAH ZUN GÜF TE MAH ZUN (SAZ)



ŞAZ DA HAS RET HÜZ NÜ VAR SAZ DA HAS RET HÜZ NÜ VAR



((SAZ))



FAHİR GÜNERİ

BİR HİCAZKÂR ŞARKIDIR HEP GÖZLERİNDE İLKBAHAR  
SANKİ SENSİZ BİR HÜZÜNDÜR BAHÇELERDE GONCALAR  
BESTE MAHZÜN, GÜFTE MAHZÜN, SAZDA HASRET HÜZÜNÜ VAR  
CANLA CANÂN AYRI DÜŞMÜŞ, BAHÇE ARTIK TÂRUMÂR

YILMAZ KARAKOYUNLU