

2962

HICAZKÂR SARKI
ÇEŞM.İ ÂHU BİR GÜZEL

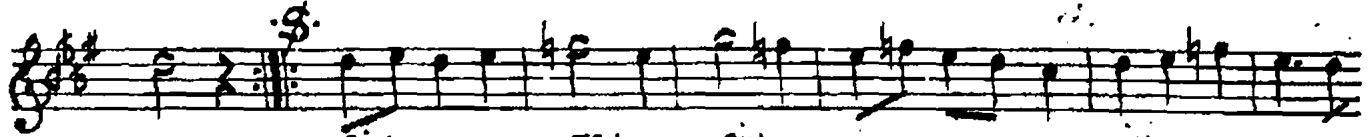
MÜZİK: RİFAT BEY

SEMÂİ

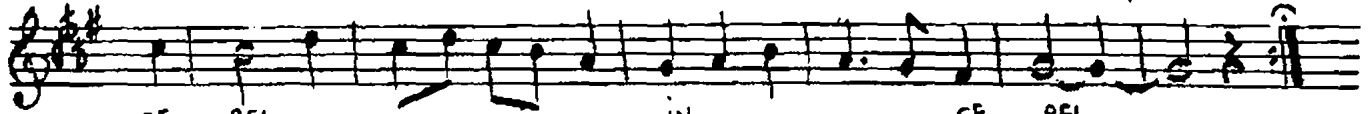
♩ = 120



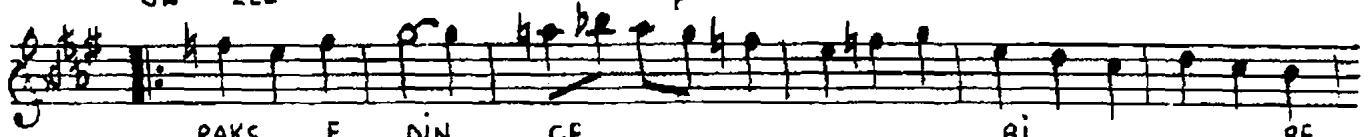
GEŞ MI A HÜ BİR GÜ ZEL



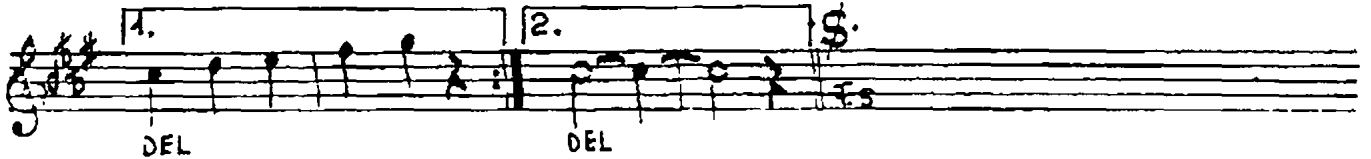
SİM DEK GÜ TEN ZEL SİN SİN İN DEK



ÇE. BEL ZEL İN DEK ÇE. BEL ZEL

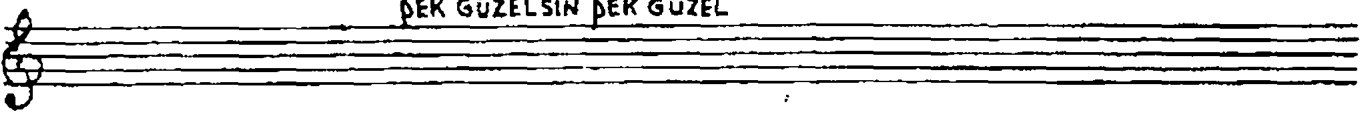
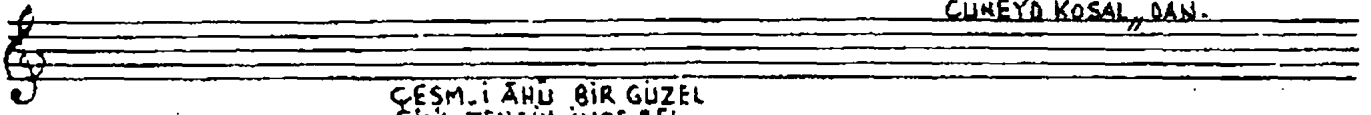


RAKS E DİN ÇE Bİ BE



DEL DEL

"CÜNEYD KOSAL" DAN.



ÇEŞM.İ ÂHU BİR GÜZEL
SİM TENSİN İNCE BEL
RAKSEDİNÇE Bİ. BEDEL
DEK GÜZELSİN DEK GÜZEL