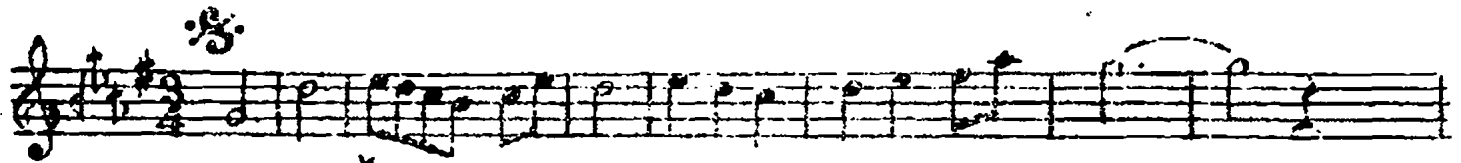
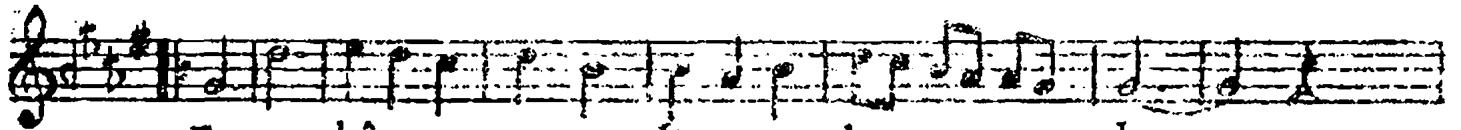
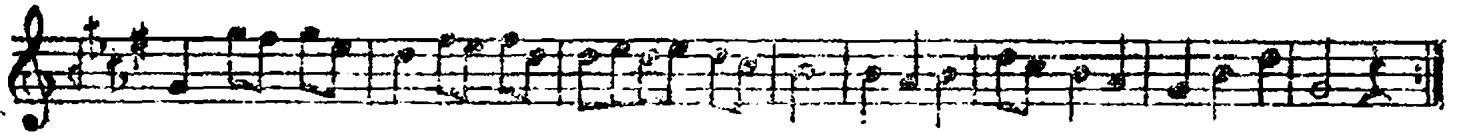


3993

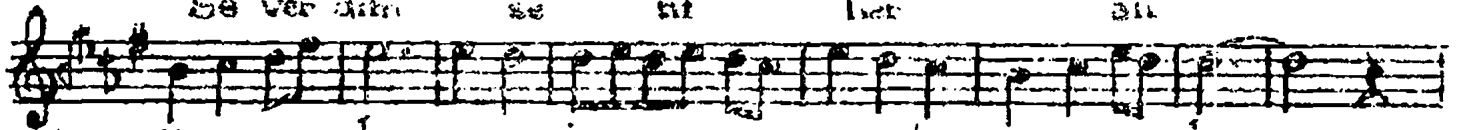
Semâî

HİCÂZKÂR ŞARKI  
(Ey ahû gözlü kadın)Güfte ve Beste  
Sabri Süha. Ansen

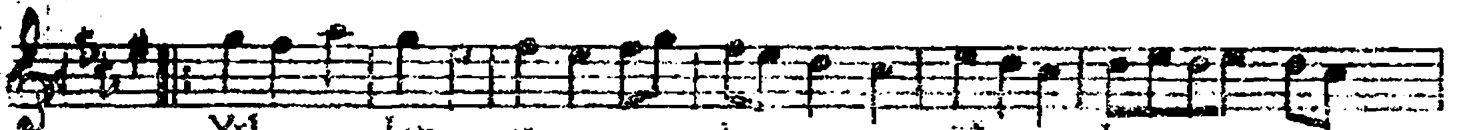
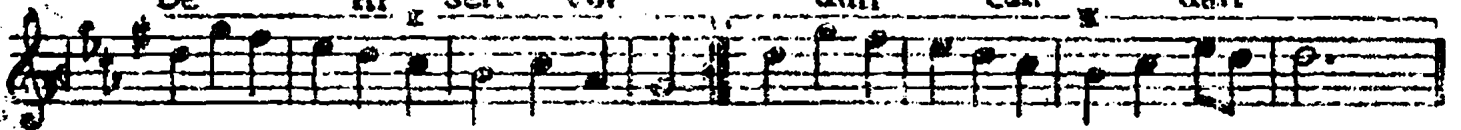
## ARANAĞME



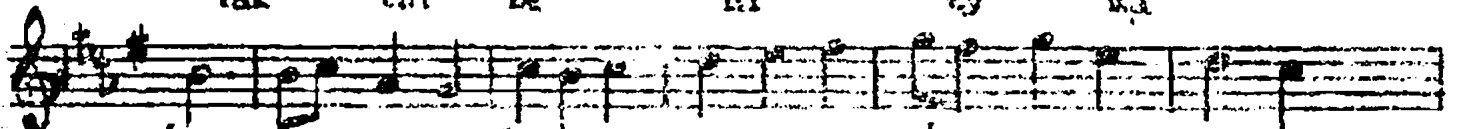
Ey a hâ gös lü ka dın  
Se ver dım se nı her an



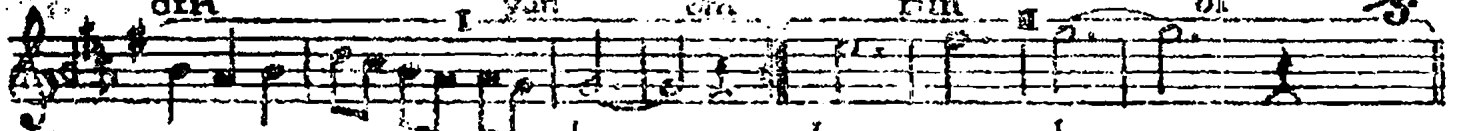
sev da ma i nan ma dın dan  
Be ni sen vur dın cak dan



Yıl lar ca ben ay la  
Yak tın le ni ey ka



dım bir gün ol sun  
dan yan da rın ol



on ma dın lan ma dın  
duk ça yan duk ca yan

Ey ahû gözlü kadın  
Sevdama inanmadın  
Yıllarca ben ağladım  
Bir gün olsun anmadın

Severdim seni her an  
Bent sen vurdun vandan  
Yaktın beni ey kadın  
Yan burun öldükçe yan