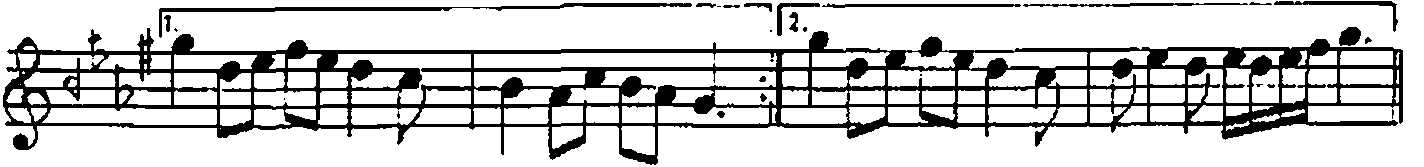
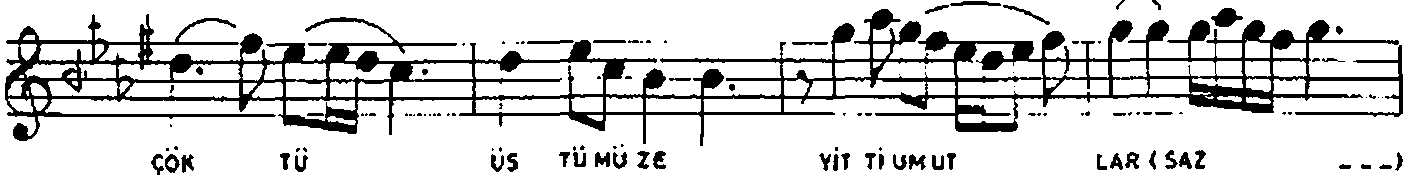
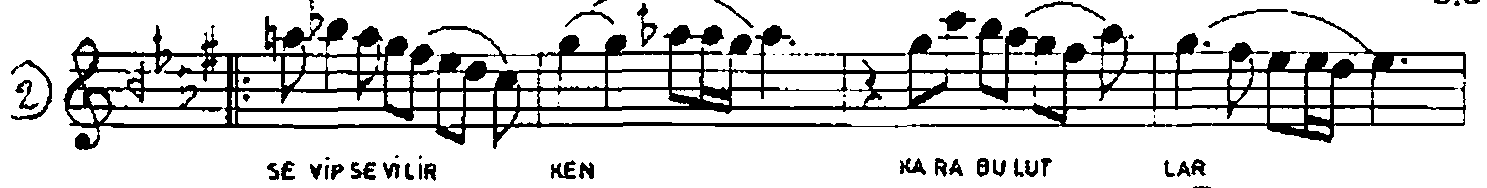
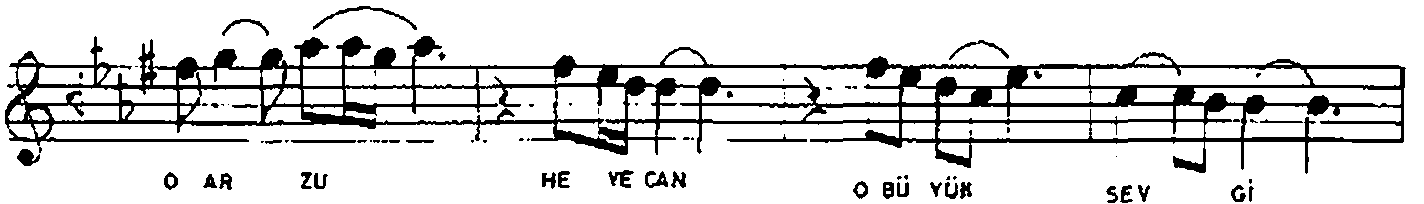
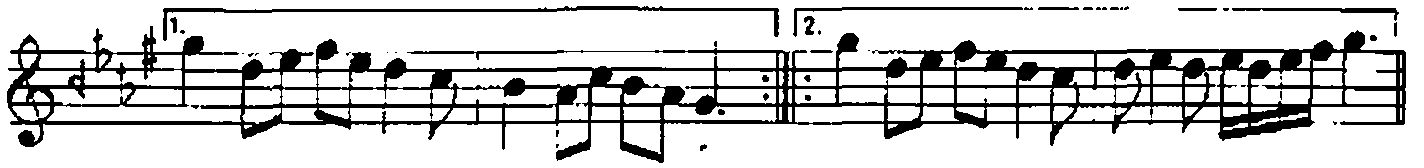
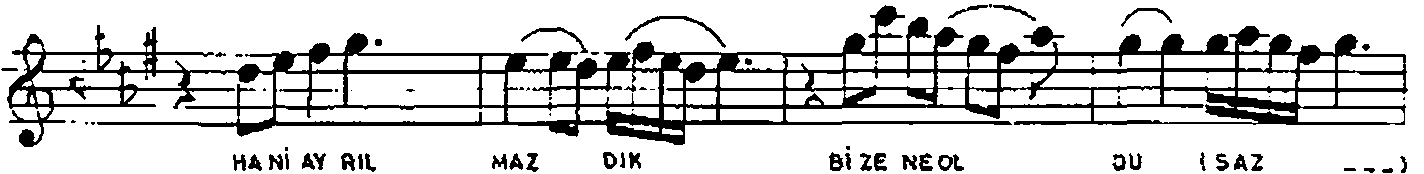
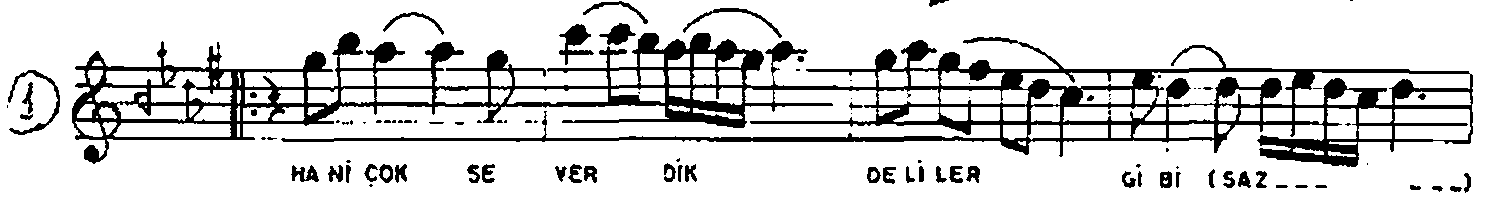


Rep. Nos 19660

HICAZKÂR ŞARKI
NANI ÇOK SEVERDİK DELİLER GİBİ

AKSAK

BESTE: GÜLTEKİN AYDOĞDU
SÖZ : PERVİN ŞAKAR



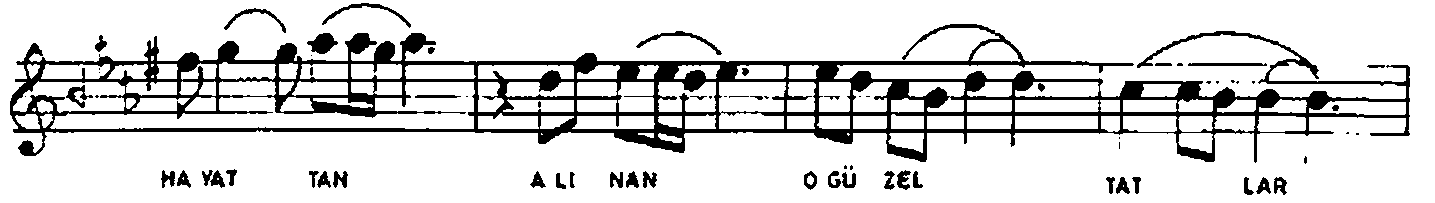
HICAZKÂR SARKI

HANİ ÇOK SEVERDİK DELİLER GİBİ

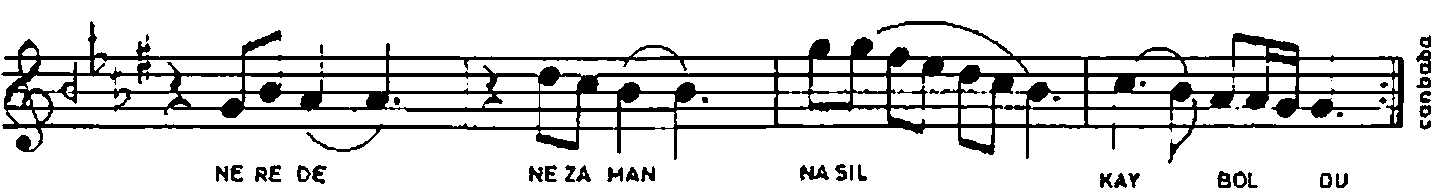
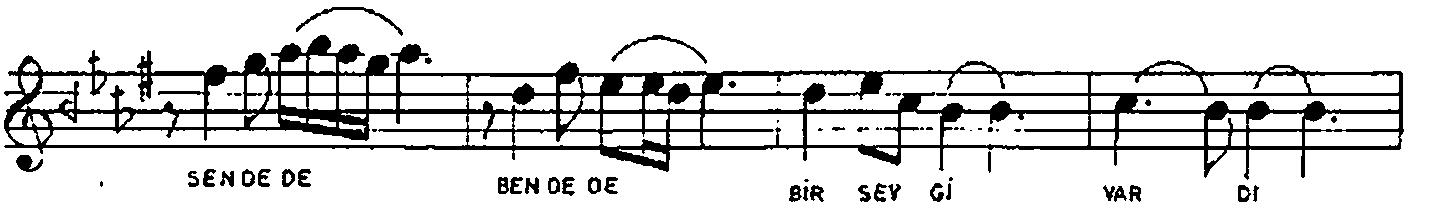
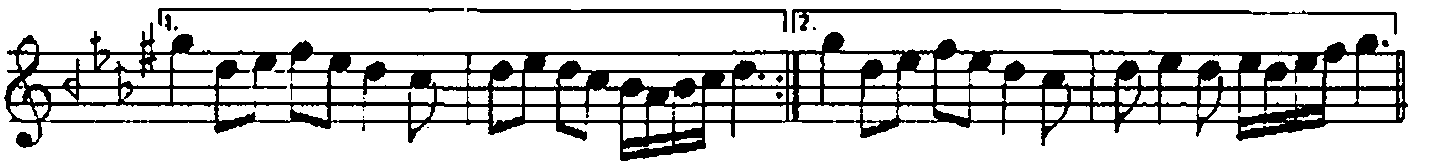
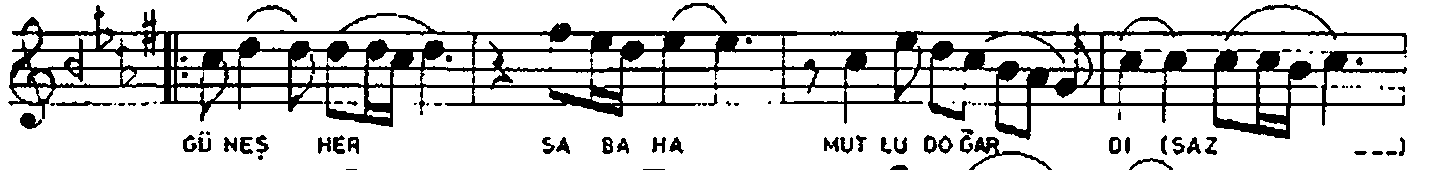
BESTE: GÜLTEKİN AYDOĞDU

SÖZ : PERVİN ŞAKAR

19660



3



canbaba

HANİ ÇOK SEVERDİK DELİLER GİBİ
HANİ AYRILMAZDIK BİZE NE OLDU
O ARZU HEYECAN O BÜYÜK SEVGİ
NEREDE NE ZAMAN NASIL KAYBOLDU

SEVİLİP SEVİLİRKEN KARA BULUTLAR
ÇÖKTÜ ÜSTÜMÜZE YİTTİ UMUTLAR
HAYATTAN ALINAN O GÜZEL TATLAR
NEREDE NE ZAMAN NASIL KAYBOLDU

GÜNEŞ HER SABAHİ MUTLU DOĞARDI
YAĞMURLAR SEVGİYLE AŞKLA YAĞARDI
SENDE DE BENDE DE BİR SEVGİ VARDI
NEREDE NE ZAMAN NASIL KAYBOLDU