

HİCAZKÂR ŞARKI
HIÇ ESMEYE GÜZ YELLERİ SEN DİLBERE CANAN

-1-

Usûl: Türk Aksâğı
J.76

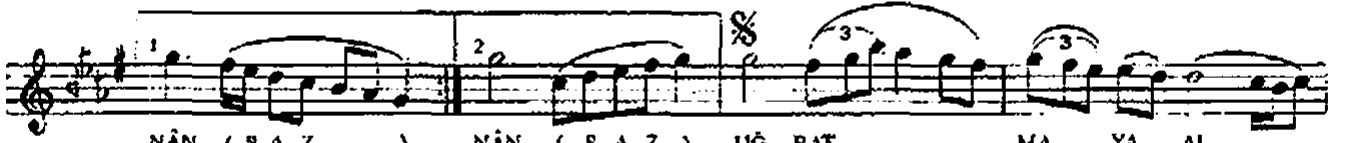
Güfte: Hz. Mevlâna
Beste: Savaş ÖZKÖK



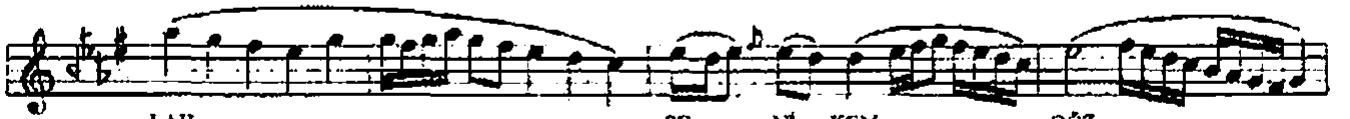
HIÇ ES ME YE GÜZ YEL YEL



LE RI SEN DİL BE RE CA



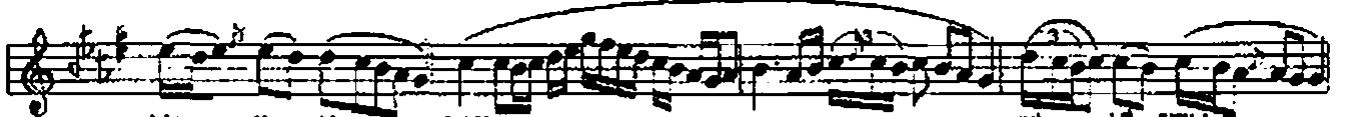
NÂN (S A Z . .) NÂN (S A Z) UĞ RAT MA YA AL
CA NIN E RE HEP



LAH SE Nİ KEM GÖZ
RAH ME TE Nİ MET



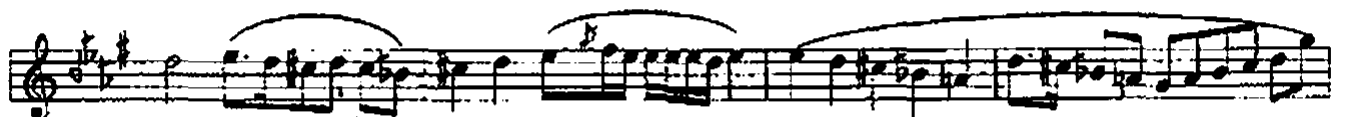
GÖZ LE RE CA NÂN (S A Z . .) UĞ RAT
MET LE RE CA NÂN (S A Z . .) CA NIN



MA YA AL LAH SE Nİ KEM
E RE HEP RAH ME TE Nİ



GÖZ LE RE CA NÂN (S A Z . .)
MET LE RE CA NÂN (SON)



SEN CA Nİ HA YAT SIN



GÜ ZE LİM AR AR ZU SE MA



YA (S A Z . .) SEN CA Nİ HA YAT SIN

The image shows two staves of musical notation in a treble clef, 2/4 time signature, and D major key. The first staff contains the melody for the first line of the song, with lyrics 'GÜ Z E L İ M A R' written below it. The second staff contains the melody for the second line, with lyrics 'Z U S E M A Y A (S A Z)' written below it. The notation includes various note values, rests, and phrasing slurs.

HİÇ ESMEYE GÜZ YELLERİ SEN DİLBERE CANÂN
UĞRATMAYA ALLAH SENİ KEM GÖZLERE CANÂN
SEN CÂN-ÜHAYATSIN GÜZELİM ARZU SEMAYA
CANIN ERE HEP RAHMETE NİMETLERE CANÂN