

4657:1

H İ C A Z K Â R ŞARKI

Söz: Halide N. ZORLUTUNA

Müzik: Kaya BEKÂT

Usûlü: Aksak

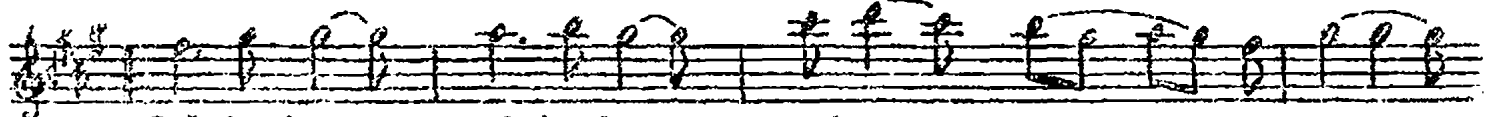
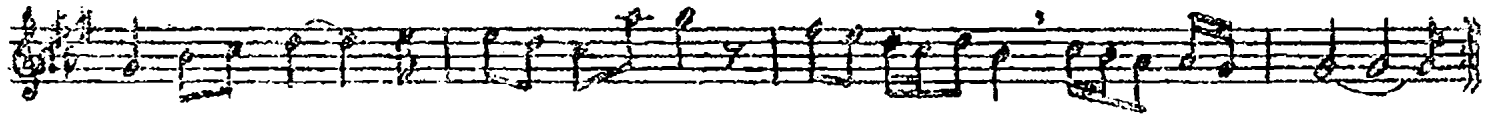
Süre : 3.50

Gel bahar, gel bahar, yakınlarda gel.. 16. Mart. 1968-İzmir

(P-208)



A r a n a ğ m e . . .



Gel ba har... gel ba har... yakın... lar.....da gel....



- S A Z -

- S A Z -

Sulararengin... den



arma ğ an.....bl rak..... Sula ra ren gin..... den....

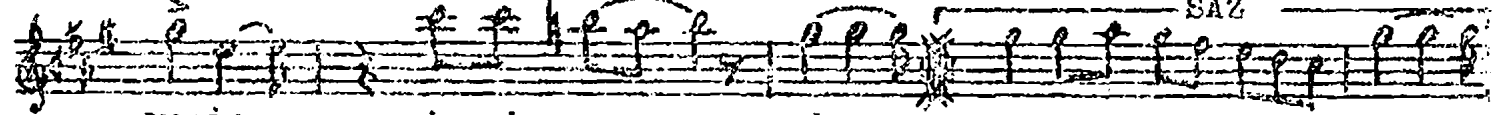


ar.....ma ğ an.....bl..... rak....

MEYAN SAZI



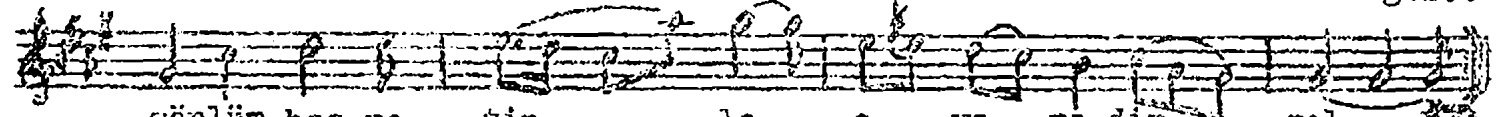
U- fuk lar da ge zin.... gök le re..... sü sül sonrayavaşy



vaşin... i...çi me.... ak...



Gönlüm has... re tin..... le.. a.. va re..dir gel..



gönlüm has re tin..... le.. a.. va.. re dir... gel...

GEL, BAHAR, GEL BAHAR, YAKINLARDA GEL.

SULARA RENGINİN ARIĞAN FİRAK:

HEZELARDA GEZME, GÖZLERİM SÜSÜL,

SONDA YAVAS YAVAS GEZME...

Reat