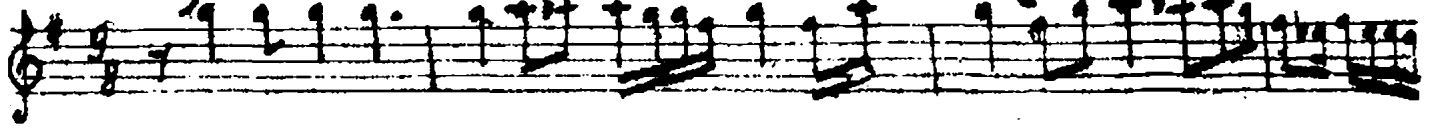


Hiçkür Köşme

Faiz Kapanoğlu

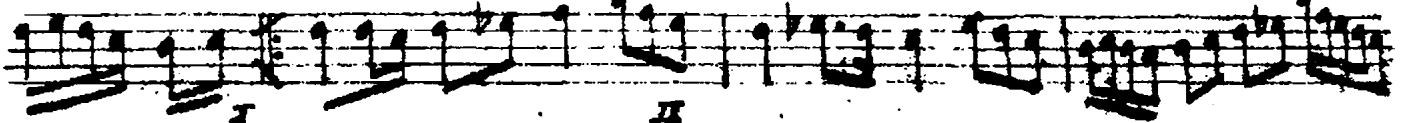
GELSE NİN LE KOL KO LA ŞÖY LE

gi DELİM BAĞ LAR DA ŞI



NA

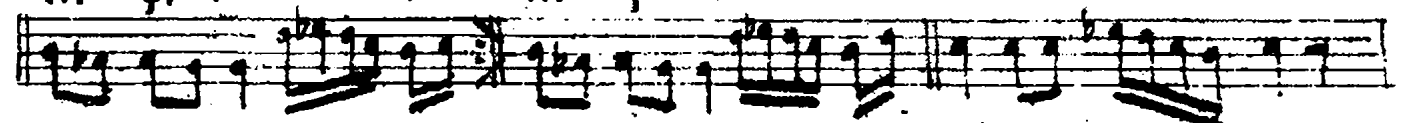
SE Vİ ŞE LIM ŞÖY LE BÖY LE O TU RA LIM



TA ŞI NA

TA ŞI NA

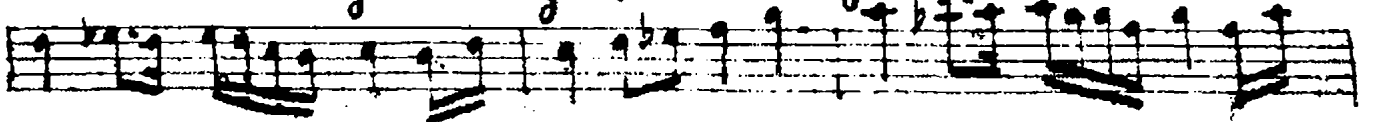
NAZ LI DİL BER



NAZ ET ME

GEL

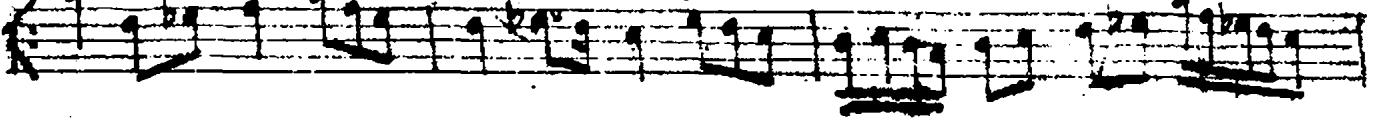
gi DE LIM DA ĞIN BA ŞI NA



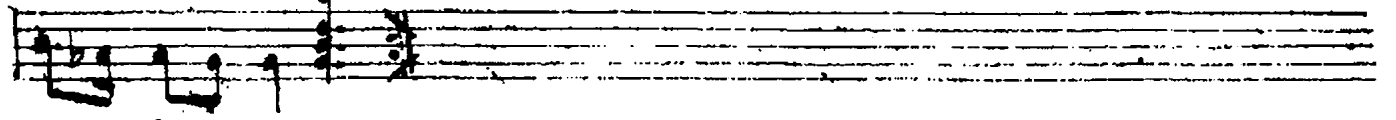
KUŞ LAR BI ZE

OL MAZEN GEL

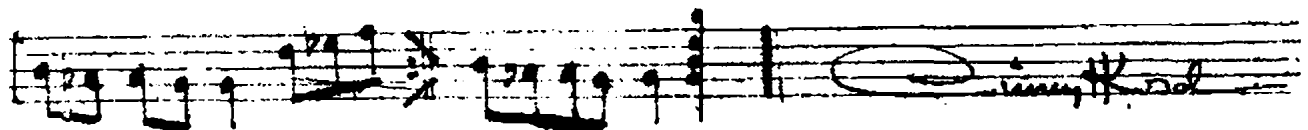
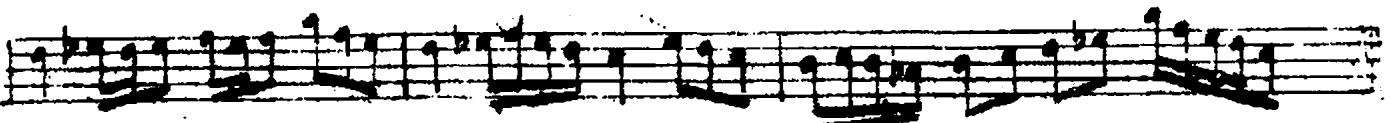
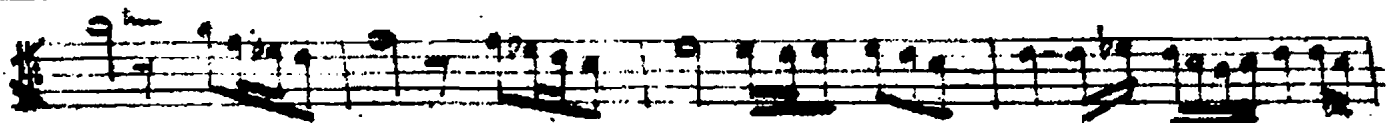
O TU RA LIM



TA ŞI NA



ARANAME



yeşil camlar, sık ormanlar
çemenler, dağlar, yuvalar
şahit olsun sevdamıza

nazlı delber, nazetme gel
gidelim dağın başına
kuşlar Bizimle, engel