

T R Y
Musik Dalri
T S M

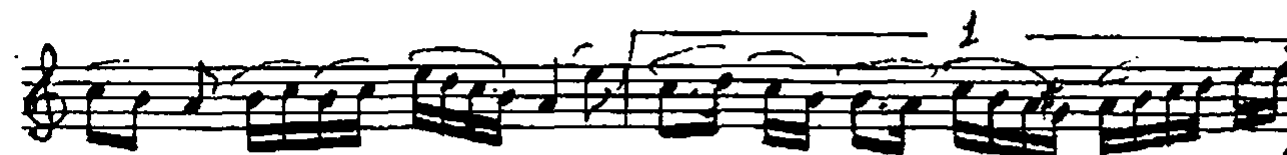
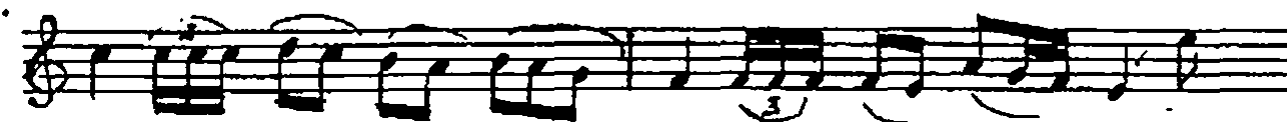
BÜSELİK SAZ SEMAİ

ALÂEDDİN YAVUŞCA

Daks-Semâi



TESLİM



Handwritten musical score for 'Yivük Semâi' in 6/8 time. The score consists of nine staves of music. The first seven staves are in treble clef, and the eighth and ninth staves are in bass clef. The music includes various rhythmic patterns, including eighth and sixteenth notes, and rests. There are several performance instructions and markings: '1) Yivük Semâi' is written above the eighth staff; '1' and '2' are written above the first and second measures of the ninth staff; '3 TESLİMİ' is written above the first measure of the tenth staff; and 'Dr. Alâeddin Karapınar' and 'VİĞNEZADE / 1995' are written below the tenth staff. The score ends with a double bar line and a fermata-like symbol.