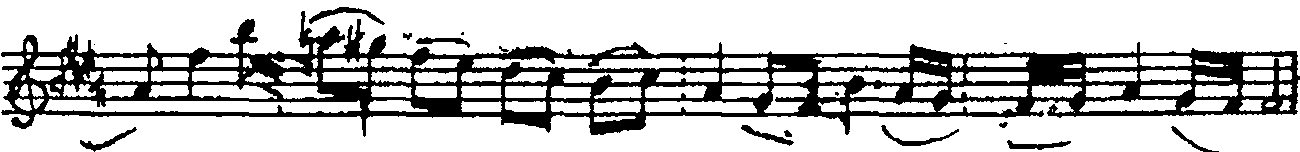
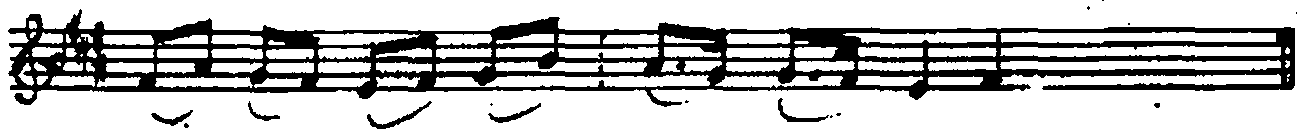
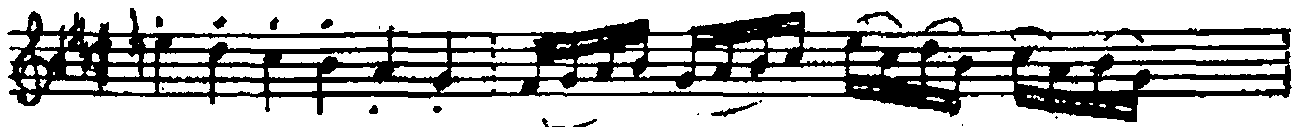
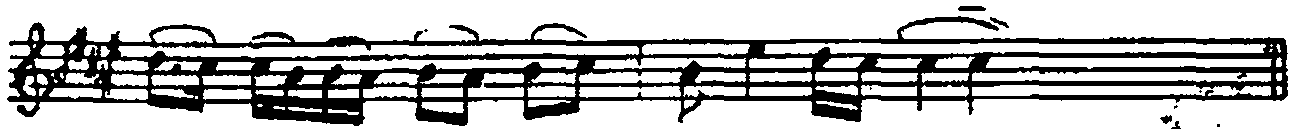
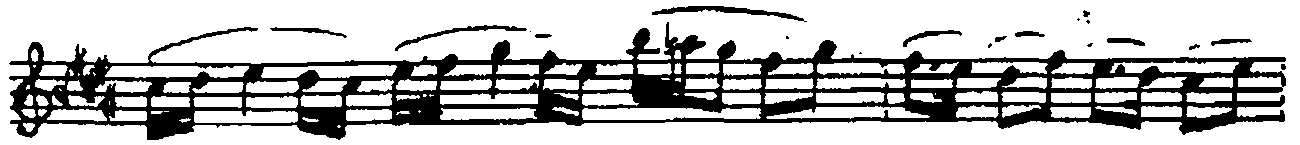


A. Y. $\text{♩} = 70$
Devr-i Kebir

EVCÂRÂ PEŞREVI

Beste: ALÂEDDİN YAVUĞCA
15. 7. 1997 Pınarhisar/ATAKÖY

1. HANE



EVCIARA PEŞREVI (2)

2. HANE

Handwritten musical notation for the second HANE section, consisting of five staves of music in a treble clef with a key signature of two sharps (F# and C#). The notation includes various note values, rests, and phrasing slurs.

3. HANE

Handwritten musical notation for the third HANE section, consisting of five staves of music in a treble clef with a key signature of two sharps (F# and C#). The notation includes various note values, rests, and phrasing slurs.

ENCARĂ PEŞREVI (3)

4. HANE

