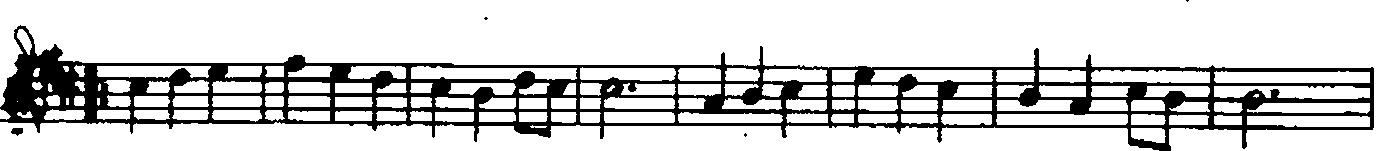
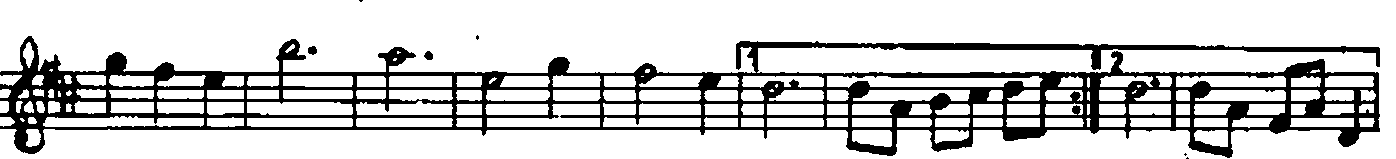
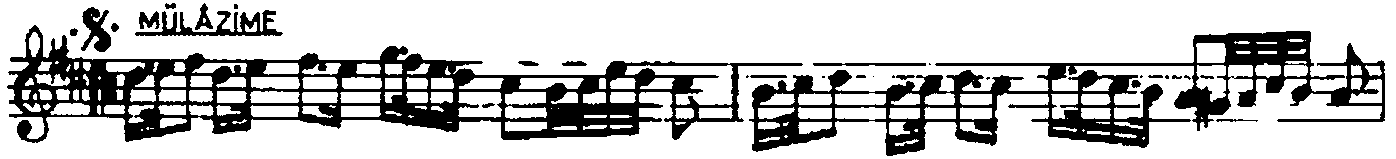


FERAHNÂK SAZ SEMÂÎ

AKSAK SEMÂÎ

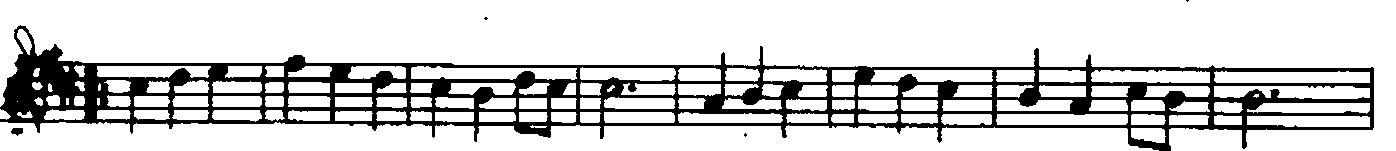
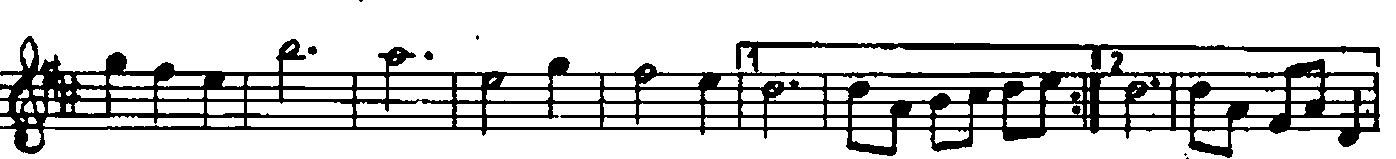
M.REŞAT AYSU

1. HANE



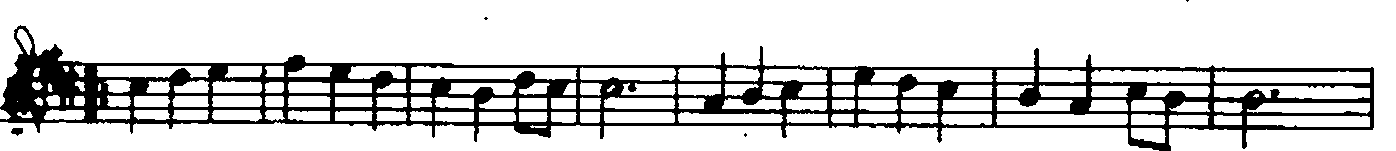
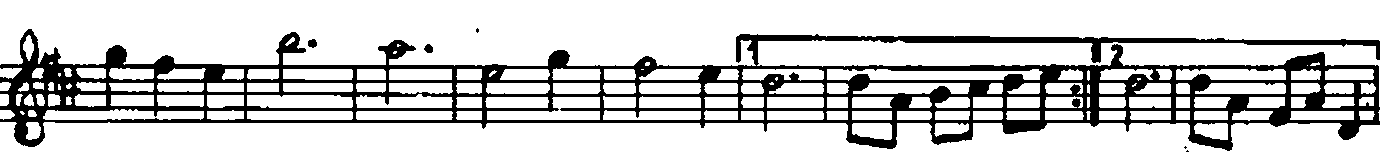
MÛLÂZİME

2. HANE

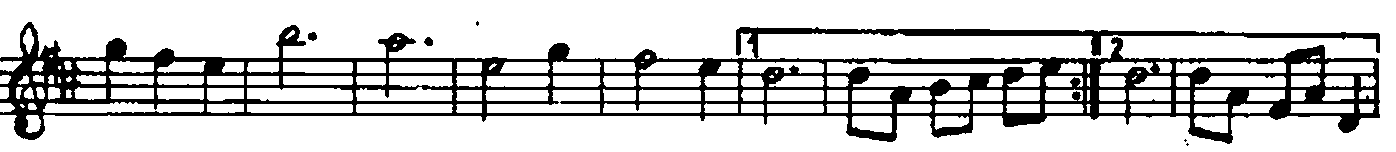


(SON)

3. HANE



4. HANE



The image displays a musical score for a piece in G major, consisting of ten staves of notation. The score begins with a treble clef, a key signature of one sharp (F#), and a common time signature (C). The first staff contains a series of eighth and sixteenth notes. The second staff is marked "Animato" and features a more complex rhythmic pattern with many sixteenth notes. The third staff is marked with a "B" and contains a sequence of eighth notes. The fourth staff continues with eighth notes and includes a fermata. The fifth staff has a first ending bracket over the final two measures. The sixth staff features a series of eighth notes with a fermata. The seventh staff has a first ending bracket over the final two measures. The eighth staff has a first ending bracket over the final two measures. The ninth staff has a first ending bracket over the final two measures. The tenth staff has a first ending bracket over the final two measures and ends with a double bar line and repeat sign.

Beste tarihi: 18 Mayıs 1966