

DÜYEN

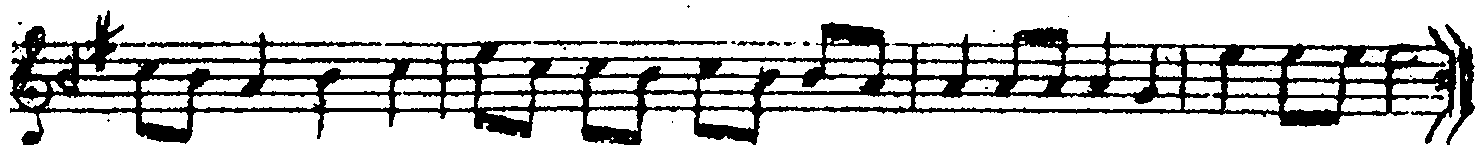
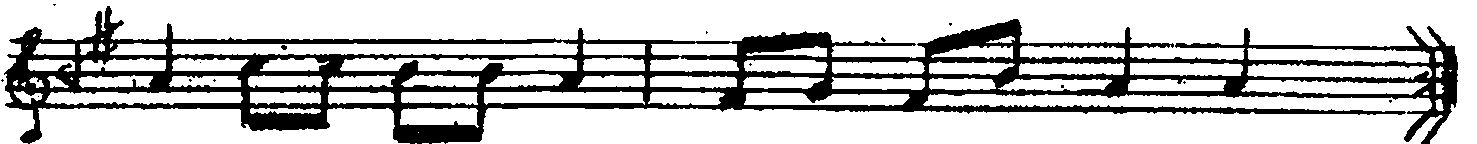
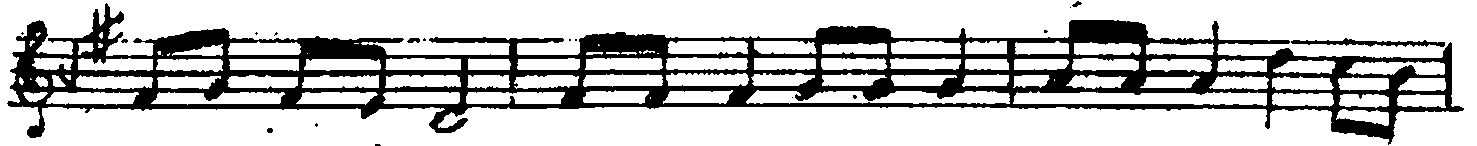
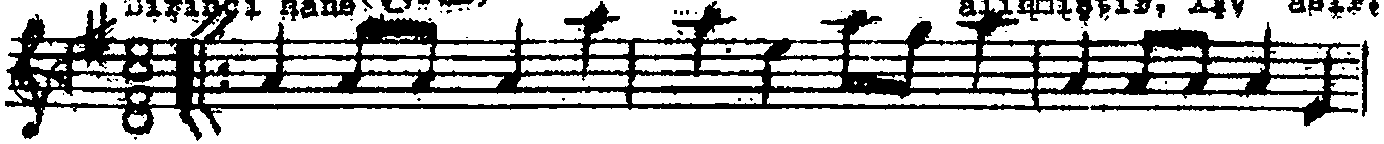
(MEHTER) HÜSEYİNİ

N 3 1

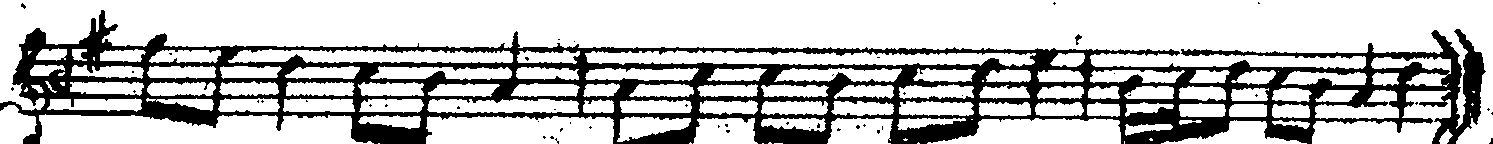
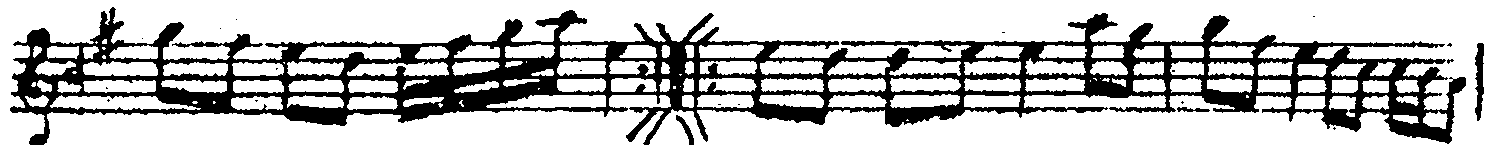
Sahibi Hasan Can

Ali Ufkü Külliyyatin den
alınmıştır, XIV asır.

Birinci hane (Ras)

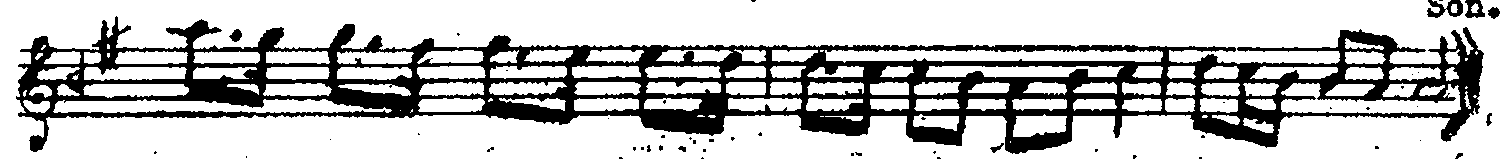
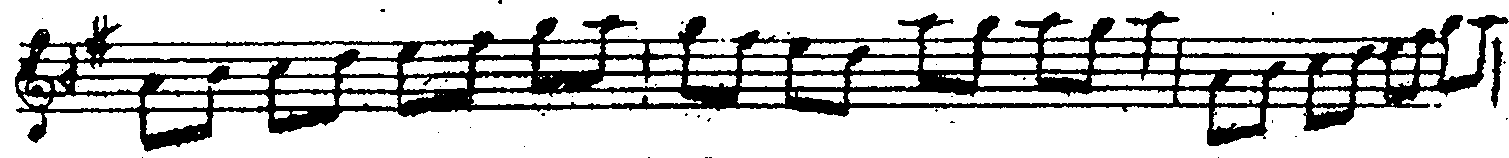
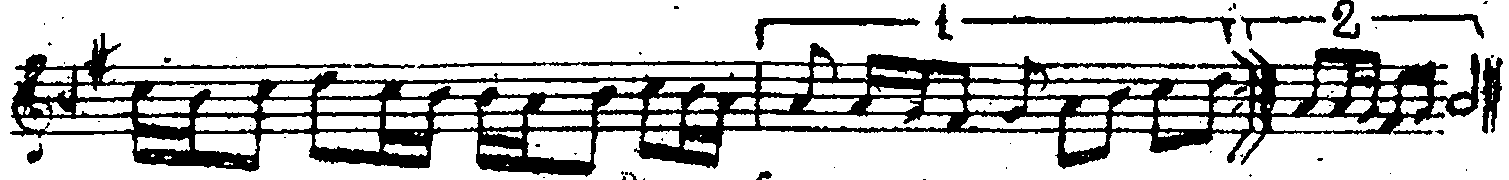
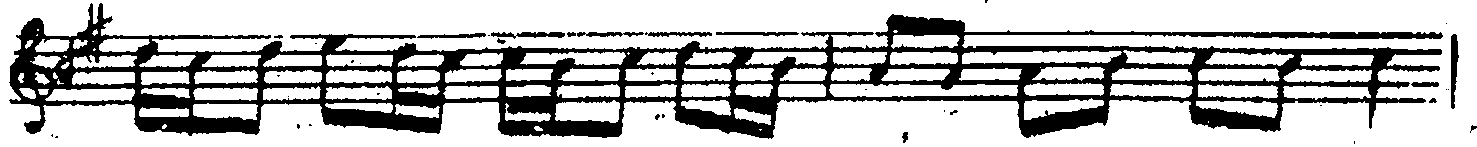
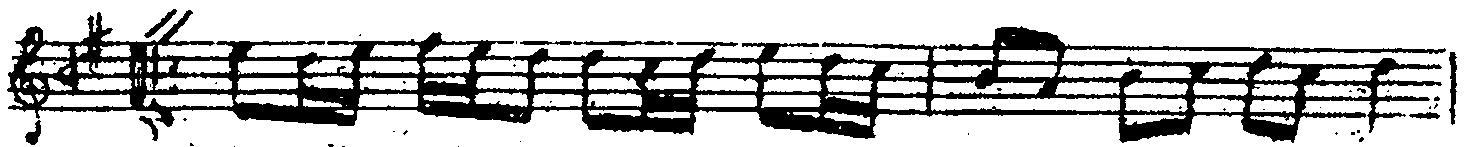
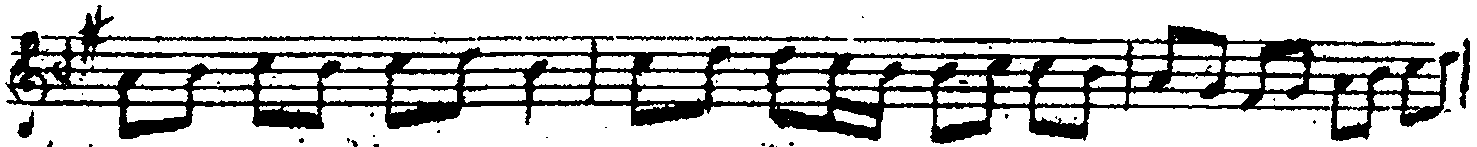
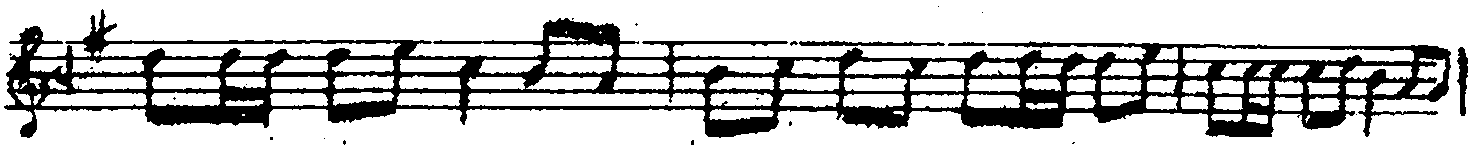
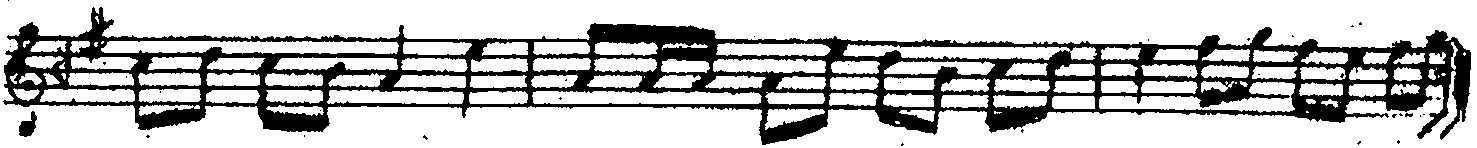
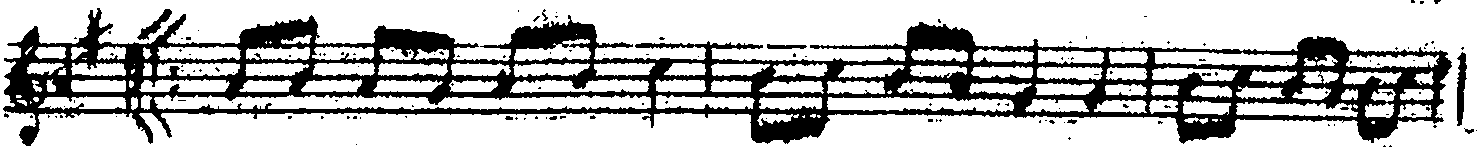


Teslin



Hüseyinî (MEHTER)

R.



Son.



İkinci Hane'

Üçüncü Hane

Not: Hasan Can Çaldıran seferinden sonra Yavuz Sultan Selim tarafından İstanbul getirilmiş ve Padişahın Nediri olmuş Padişahın önünde başı ucunda bulmuş