

debu putih = hujan pasir = tentara isak

A handwritten musical score consisting of ten staves of music. The notation is in a single system, likely for a vocal line. The music is written in a treble clef with a common time signature (C). The notes are mostly eighth and sixteenth notes, often beamed together in groups. There are several accidentals, including sharps and naturals, scattered throughout the piece. The handwriting is clear and legible.

5

Musical notation for the first system, consisting of three staves. The first staff has a treble clef and a key signature of one sharp (F#). It contains a melodic line with eighth and sixteenth notes, including triplets. The second staff continues the melody with similar rhythmic patterns. The third staff shows a continuation of the melodic line with some rests and a final note.

2

Musical notation for the second system, consisting of nine staves. The first staff has a treble clef and a key signature of one sharp (F#). It contains a melodic line with eighth and sixteenth notes, including triplets. The second staff continues the melody with similar rhythmic patterns. The third staff shows a continuation of the melodic line with some rests and a final note. The fourth staff continues the melody with similar rhythmic patterns. The fifth staff shows a continuation of the melodic line with some rests and a final note. The sixth staff continues the melody with similar rhythmic patterns. The seventh staff shows a continuation of the melodic line with some rests and a final note. The eighth staff continues the melody with similar rhythmic patterns. The ninth staff shows a continuation of the melodic line with some rests and a final note.

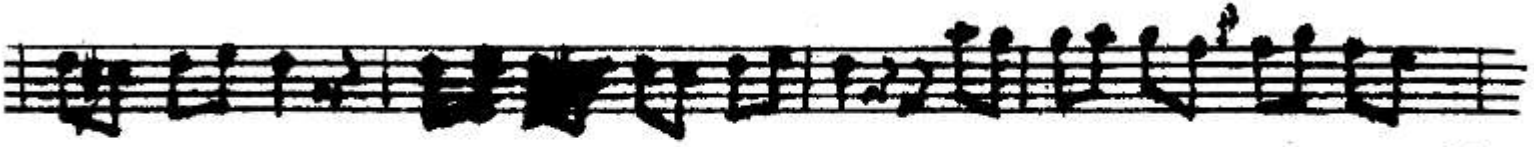


*Si ibinci lanaye*



*Si ibinci lanaye 3*





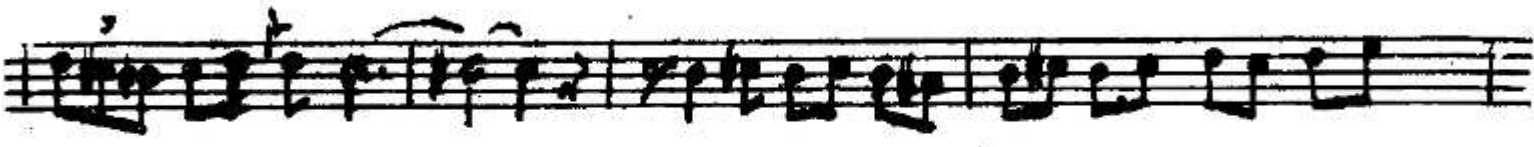
*ff*



*üçüncü sonoro dördüncü sonoro*



4





*Requiem* *Wen. op. 8*



5



A page of handwritten musical notation consisting of six staves. The notation is written in black ink on a white background. The first five staves contain complex melodic lines with various note values, including eighth and sixteenth notes, and some rests. The sixth staff ends with a double bar line and a fermata symbol. The handwriting is fluid and characteristic of a composer's sketch.

*Dimy Kosa*