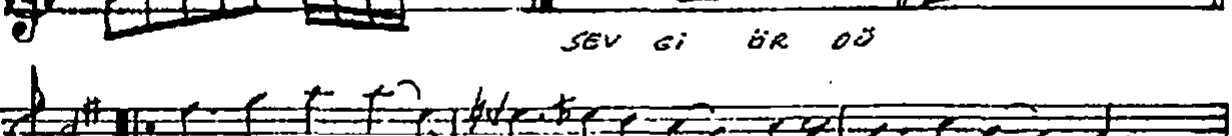
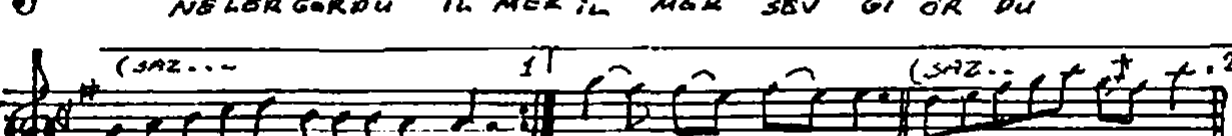
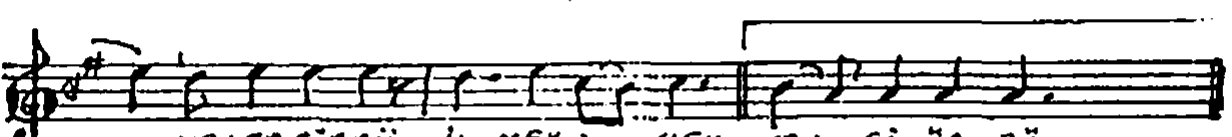
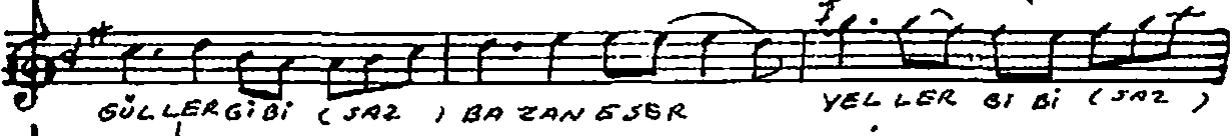
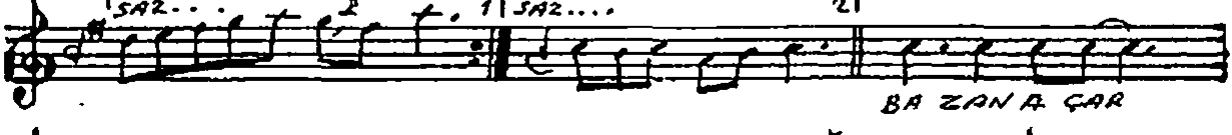
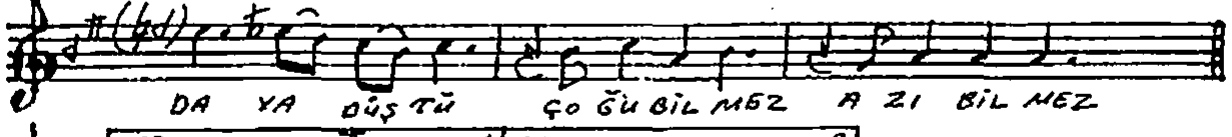
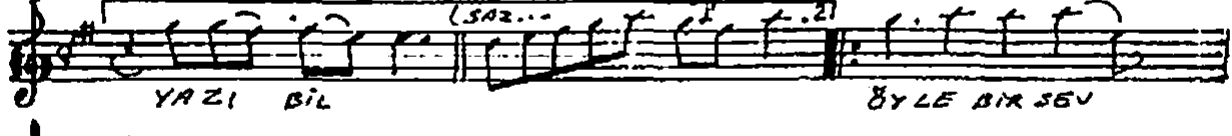
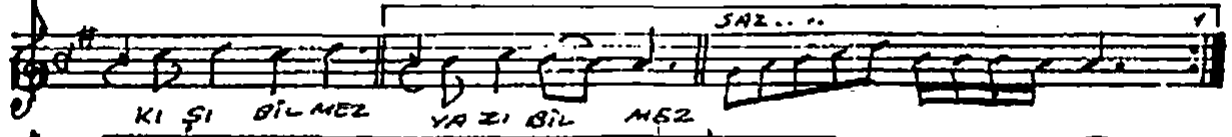
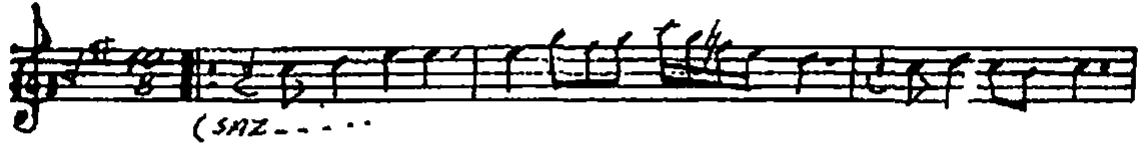


HÜSEYİNİ
CURCUNA

MÜZİK : İSMAIL DEMİRKIRAN
SÖZ : MEHMET AKÇA

(♩ = 160) SENİ GÖRDÜ DELİ GÖNLÜM



SENİ GÖRDÜ DELİ GÖNLÜM

The image shows a musical score for the song 'SENİ GÖRDÜ DELİ GÖNLÜM'. It consists of four staves of music in a treble clef with a key signature of one sharp (F#). The lyrics are written below the notes. The first staff has the lyrics 'NAZI BİLMEZ' and includes a 'SAZ...' section. The second staff has 'GİR DİN KALBE DİR HEM DİR HEM (SAZ) BU YARA YA'. The third staff has 'OL DUN MER HEM BAZAN MECNUN BA ZAN KE' and ends with 'REM'. The fourth staff has 'ZEVKİ BİLMEZ HAZI BİLMEZ' and includes a '(SAZ...)' section. There are some handwritten annotations, including 'SON' with a double underline and a circled '1' above the first staff.

29. HAZİRAN . 1995 ADANA

①
SENİ GÖRDÜ DELİ GÖNLÜM,
KIŞI BİLMEZ, YAZI BİLMEZ,
ÖYÜ DİR SEVPAYA DÜŞTÜ,
ÇÖBÜ BİLMEZ, AZI BİLMEZ.

BAZAN AÇAR GÜLLER GİBİ,
BAZAN ESER YELLER GİBİ,
ÖTER ANMA BÜLBÜL GİBİ,
ŞARKI BİLMEZ, SAZI BİLMEZ...

②
- BİLMEYEN SENDEN NELER GÖRDÜ,
İLMEK, İLMEK SEVGİ ÖRDÜ,
ÇİLCİN DİVÂNEME DÖNDÜ
İŞVE BİLMEZ, NAZI BİLMEZ...

GİRDİN KALBE DİRHEM, DİRHEM,
BU YARAYA OLDUN MERHEM,
BAZAN MECNUN, BAZAN KEREM,
ZEVKİ BİLMEZ, HAZI BİLMEZ.