

SOFYAN ♩ = 86

LÜSEYİNİ ŞARKI

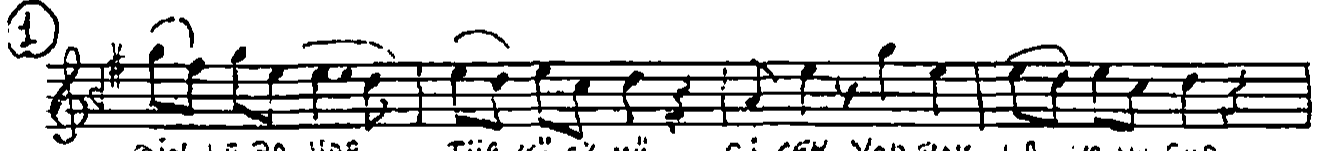
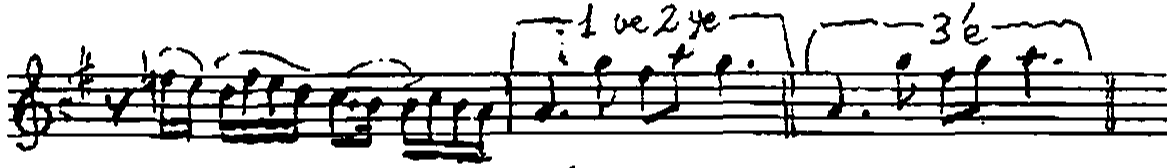
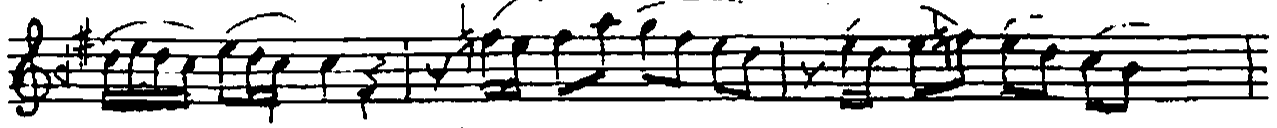
Beste: ALAEDDİN YAVAŞCA

8. VIII - 1963 - Şizmi

Güçle: FUAD EDİP BAKSI

1

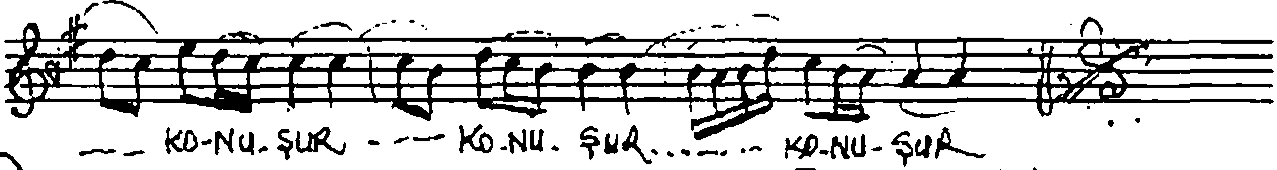
ARAYAGME



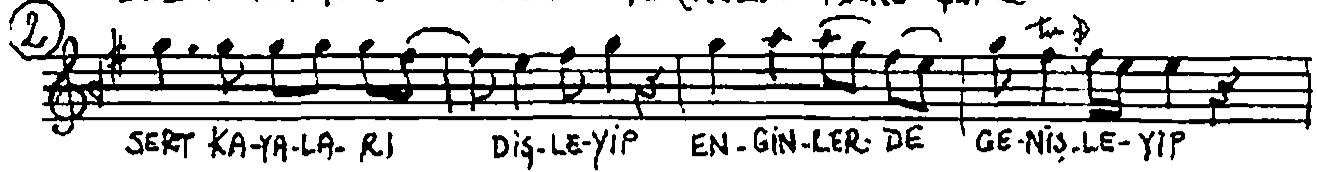
DİN-LE BA-HAR TÜR-KÜ-SÜ-NÜ Çİ-ÇEK YAP-RAK- LA KO-NU-ŞUR



GÖR TAR-LA-LA-RIN SÜ-SÜ-NÜ E-KİN TOP-RAK- LA- KO-NU-ŞUR ...



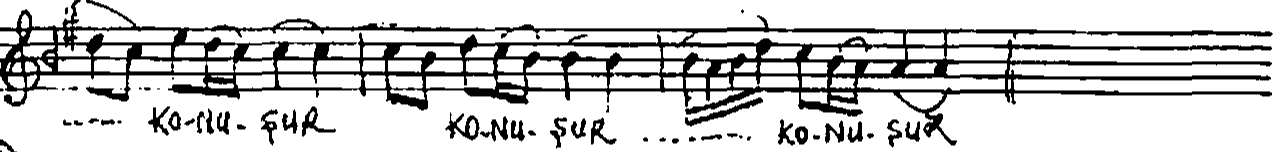
--- KO-NU-ŞUR --- KO-NU-ŞUR... --- KO-NU-ŞUR



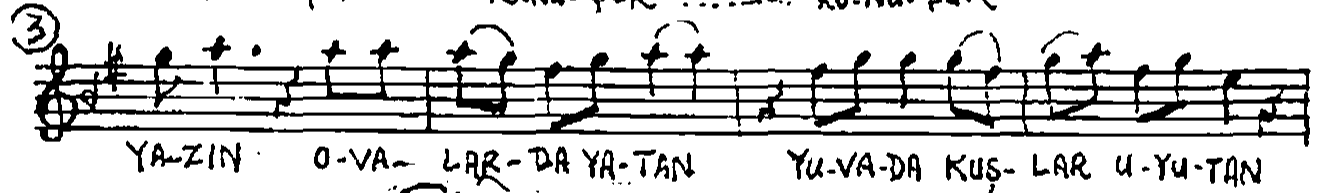
SERT KA-YA-LA- RI DİŞ-LE-YİP EN-GİN-LER- DE GE-NİŞ-LE-YİP



KÖ-PÜK-LER-DEN TÜL İŞ-LE-YİP SU-LAR IR-MAK- LA KO-NU-ŞUR



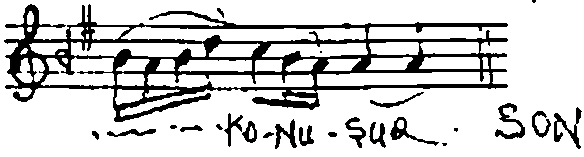
--- KO-NU-ŞUR KO-NU-ŞUR ... --- KO-NU-ŞUR



YA-ZIN O-VA- LAR- DA YA-TAN YU-VA-DA KUŞ- LAR U-YU-TAN



KI-ŞIN DAĞ---YO-LU-NU---TU-TAN RÜZ-GÂR BAY-RAK



Dr. Alâeddin Yavaşca 3592/Ş.İV

Dinle bahar türküsünü
 Çiçek yaprakla konuşur
~~Gör tarlaların süsünü~~
~~Ekin toprakla konuşur~~

xxxxxxx

Sert kayaları dişleyip
~~Enginlerde genişleyip~~
 Köpüklerden tül işleyip
 Sular ırmakla konuşur

xxxxxxxxx

~~Yazın ovalarda yatan~~
 Yuvada kuşlar uyutan
 Kışın dağ yolunu tutan
~~Kuzgar bayrakla konuşur~~

Fuad Edib Baksı