

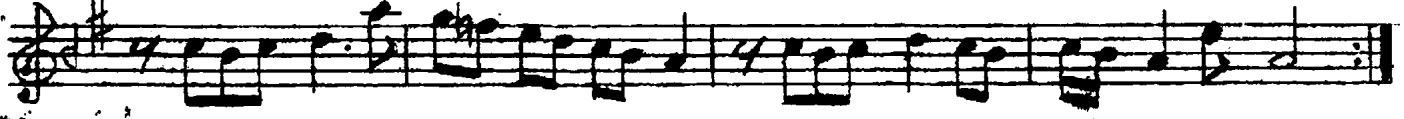
DÜYEK  
(♩=150)

HÜSEYİNİ ŞARKI  
(Her seherde sen gelirsin aklıma)

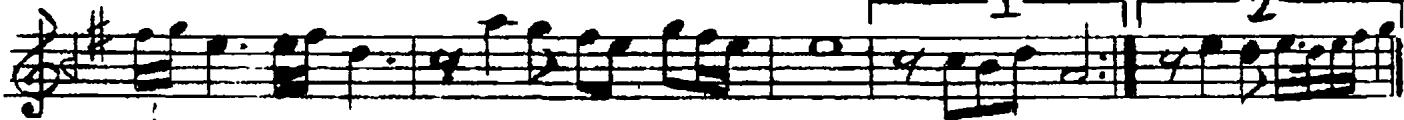
Söz: SİYAMİ ÖZEL  
Beste: NİHAT ADLİM



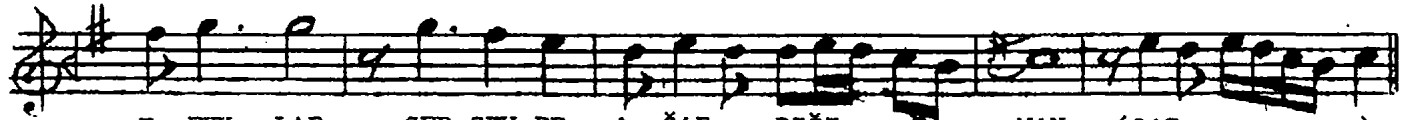
(ARANAĞME .....



HER SE HER DE ..... SEN GE LİR ....



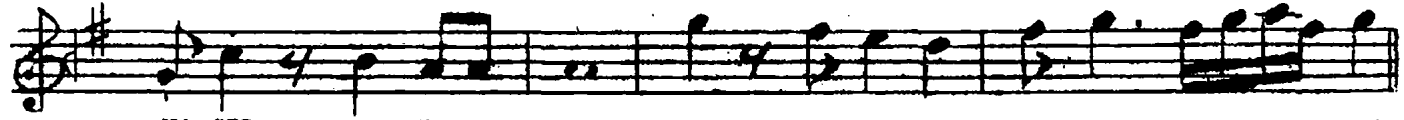
SİN ..... AK ..... LI MA - (SAZ.....) (SAZ.....)



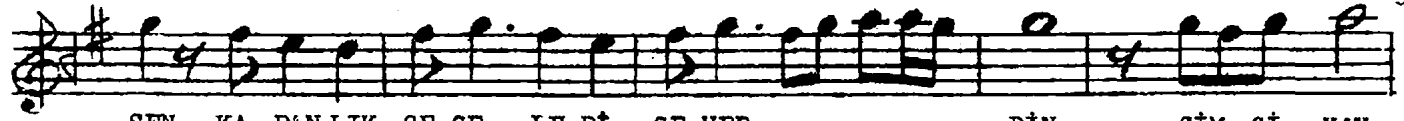
U FUK LAR ÇEP ÇEV RE A ĞAR.. DIĞI....ZA MAN (SAZ.....)



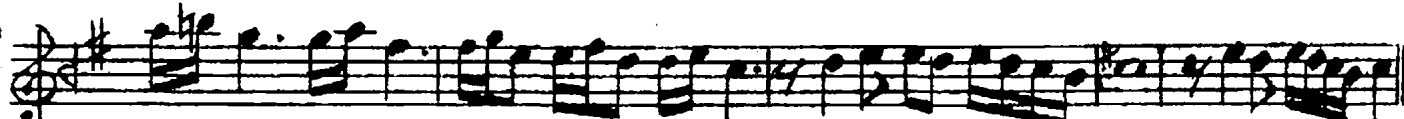
BİL SEN NA SIL ..... ÇARPI YOR... KAL ..... BİM



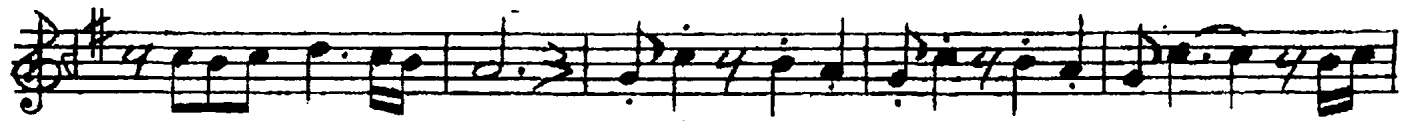
NA SIL AN LA TA MAM (SAZ.....)



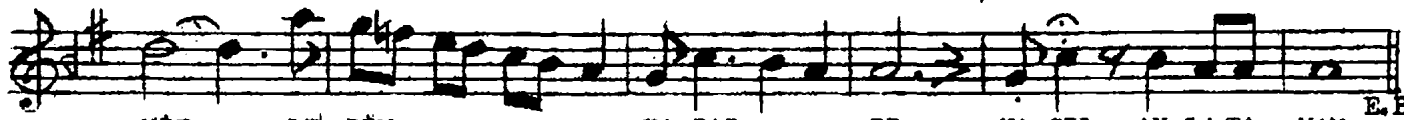
SEN KA RAN LIK GE CE LE Rİ SE VER..... DİN SİM Sİ YAH



..... GÖZLE RİN VAR... DI (SAZ.....)



SON RA EL VE DA DE DİN BİR GÜN (SAZ.....) BÜ TÜN ... U



MİT .... LE RİM..... KA RAR .... DI NA SIL AN LA TA MAM

E.B.

Her seherde sen gelirsin aklıma  
Ufuklar çepçevre ağardığı zaman  
Bilsen nasıl çarpıyor kalbim  
Nasıl, anlatamam...

Sen karanlık geceleri severdin  
Simsiyah gözlerin vardı  
Sonra elveda dedin bir gün  
Bütün ümitlerim kardı  
Nasıl, anlatamam...