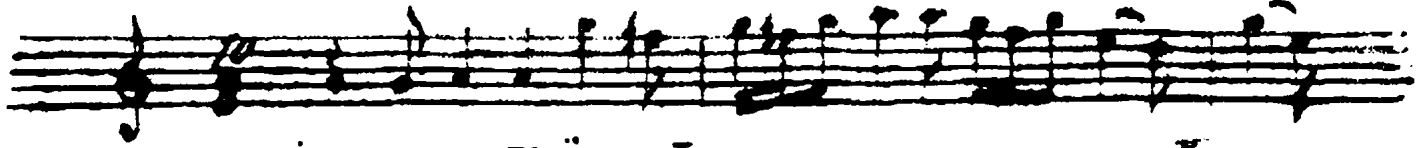


Kuşçuların Şairi

Rıza Fıratlı

Lütfü

LE BİM DE A PAR EF Y SER



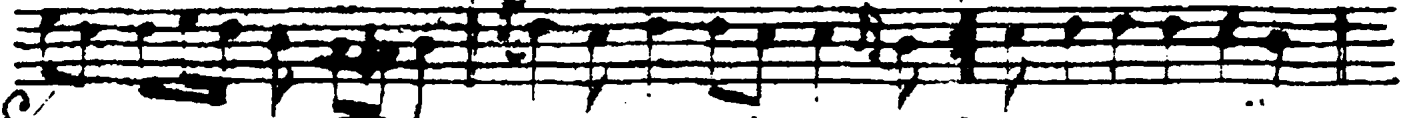
NEH LI BİR

GE

L

GE

L



S

ME LE

R

DÜ KE

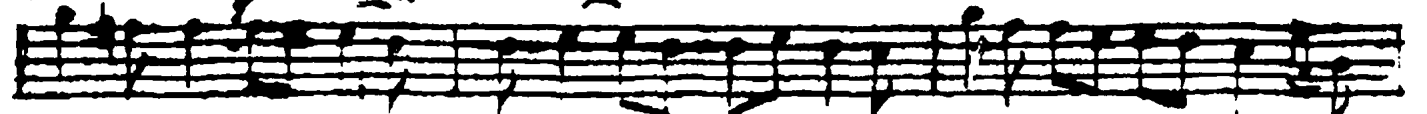
R

DI

BİR

YA NIK

BÜ



BÜ

L

NA

ME

LE

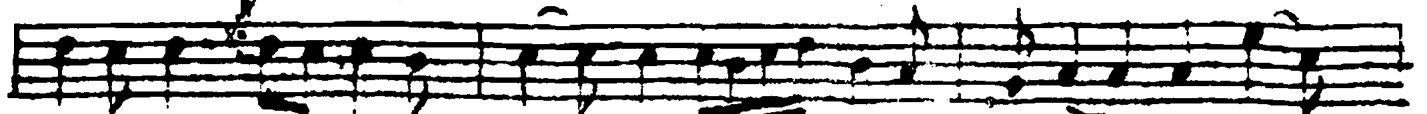
R

DÜ

KE

R

DI



BİR

YA

NIK

BÜ

BÜ

HA

ZANA



İR

DI

NI

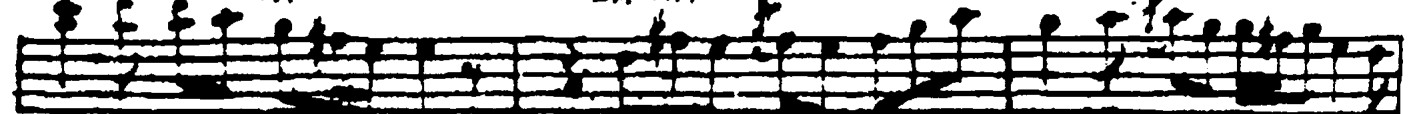
BA

HA

RIN

GE

NÜ



HA

ZANA

ER

DI

NI

BA

HA

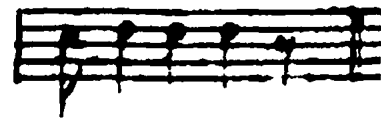
RIN

GE



NÜ

S



Getimide açarken sebrenmeli bir güc
nâgmetler dökeren bir yanık kulluk
Kuşçuların şairi bu kadarın gönül
Mevkemin şu işi vızan taytarna