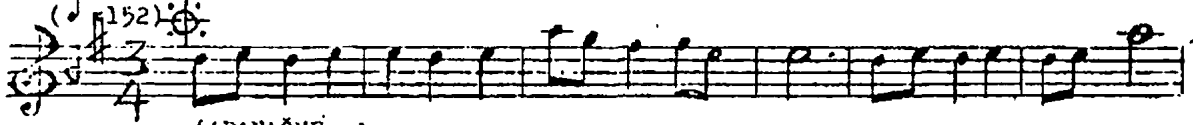


HÜSEYİNİ ŞARKI

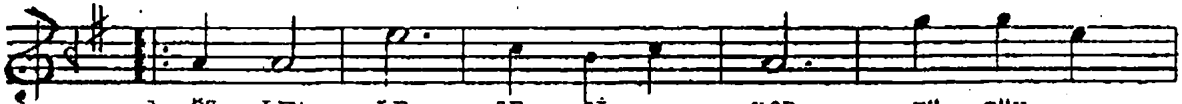
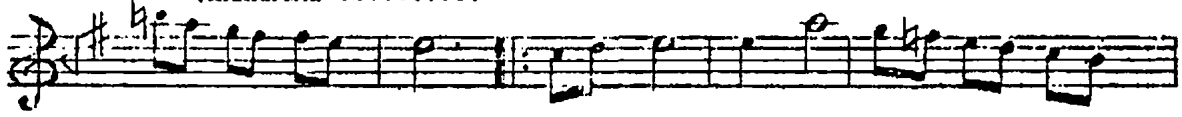
Usulü(SİMAİ-CURCUNA)

(Ozlemle geçiyor bütün günlerim)

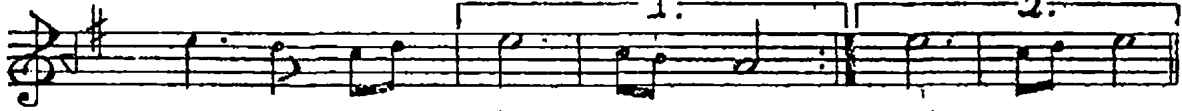
Beste:BAHRİ ALTINTAŞ
Güfte:ZİYA POLAT



(ARINAĞME



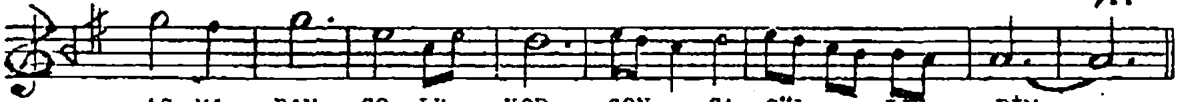
1- ÖZ LEM LE GE Çİ ... YOR BU TUN
2- SEV DA NA DU ŞE ... Lİ GÜL ME



GÜN LE RİM (SAZ)
Dİ YU ZUM (SAZ)



AÇ MA DAN SO LU YOR GON .. CA GÜL .. LE RİM (SAZ ...)
AĞ LA DIM YAL VAR DIM GEÇ .. ME Dİ ... SÖ ZÜM



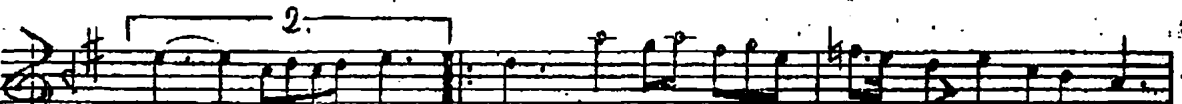
AÇ MA DAN SO LU YOR GON .. CA GÜL ... LE RİM
AĞ LA DIM YAL VAR DIM GEÇ .. ME Dİ SÖ ZÜM



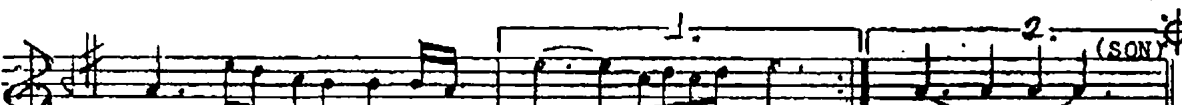
(SAZ) SEV Gİ LİM BEN



SEN DEN ... AY .. RI KA LIN .. CA (SAZ)



CA (SAZ) NEŞ E Lİ GE ... ÇER Mİ



SEN SİZ GÜN .. le. RİM (SAZ) RİM.

E.B.

ÖZLEMLE GEÇİYOR BÜTÜN GÜNLERİM
AÇMADAN SOLUYOR, GONCA GÜLLERİM
SEVGİLİM BEN SENDEN AYRI KALINCA
NEŞ'ELİ GEÇER Mİ, SENSİZ GÜNLERİM

SEVDANA DÜŞELİ GÜLMEDİ YUZUM
AĞLADIM YALVARDIM GEÇMEDİ SÖZÜM
SEVGİLİM BEN SENDEN AYRI KALINCA
NEŞ'ELİ GEÇER Mİ SENSİZ GÜNLERİM
(ZİYA POLAT)