

HÜSEYİNİ ŞARKI

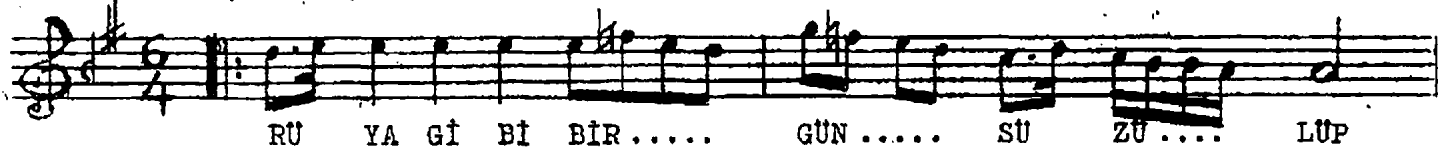
Söz: Nedim HARMANKAYA

Müzik: Necmi PİŞKİN

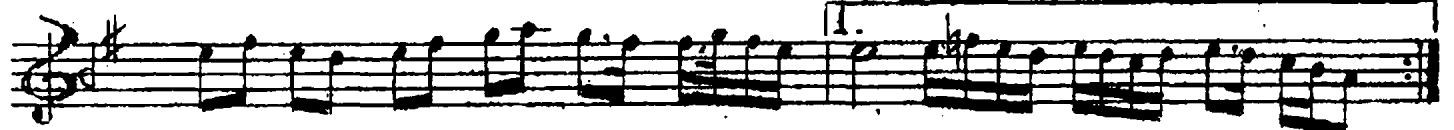
SENGİN SEMAİ (Rûyâ gibi bir gün süzülüp gönlüme aktın) Beste tarihi:

(♩ = 66)

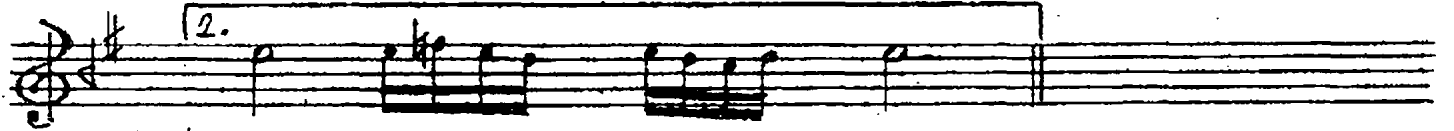
2.8.1964



RU YA GI BI BİR..... GÜN..... SU ZÜ..... LÜP



GÖN..... LÜ ME AK..... TIN (SAZ.....)



TIN (SAZ.....)



GİT TİN GÜ LE.... REK... SEN... BE Nİ GUR.....



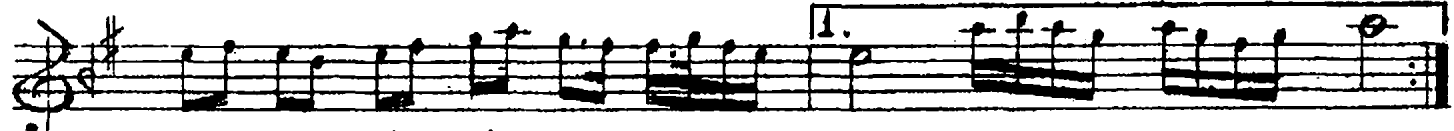
BET.... TE BI RAK..... TIN (SAZ.....)



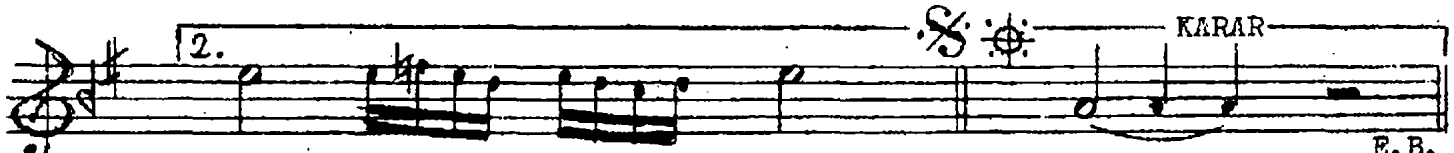
TIN (SAZ.....)



BİL MEM Kİ.. NE... DEN... HEP... BA... NA..... EL



LER.... Gİ Bİ BAK..... TIN (SAZ.....)



TIN (SAZ.....)

TIN

E.B.

RÜYÂ GİBİ BİR GÜN SÜZÜLÜP GÖNLÜME AKTIN

GİTTİN GÜLEREK SEN BENİ GURBETTE BIRAKTIN

BİLMEM Kİ NEDEN HEP BANA ELLER GİBİ BAKTIN

GİTTİN GÜLEREK SEN BENİ GURBETTE BIRAKTIN

Nedim HARMANKAYA