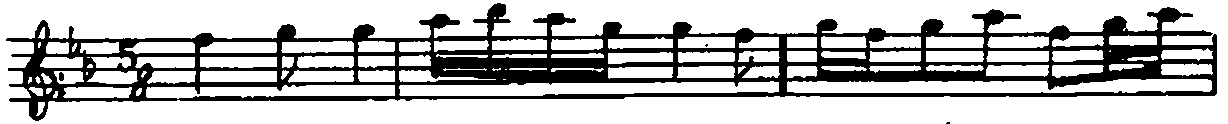


SAZ SEMÂISI

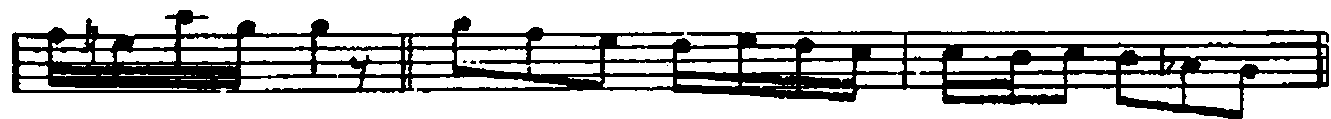
1. CI HÂNE

K. Hicâkâr

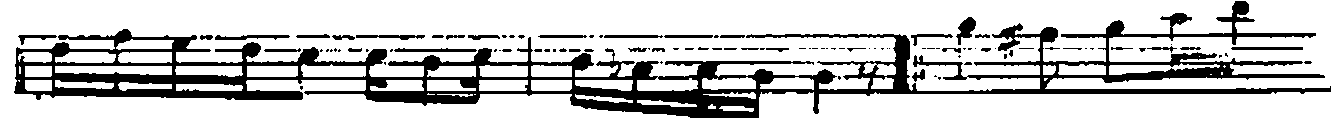
FENNİ B.



TEBİİ



2. CI HÂNE



3 : CI HANE

Musical notation for the first section, 3/4 time signature. It consists of three staves of music. The first staff begins with a treble clef and a key signature of one flat (Bb). The melody is written in a simple, rhythmic style with quarter and eighth notes. The second and third staves continue the melody, with some notes beamed together. There are several flats (b) indicated throughout the piece.

4 : CI HANE YALS

Musical notation for the second section, 4/4 time signature. It consists of eight staves of music. The first staff begins with a treble clef and a key signature of one flat (Bb). The melody is more complex than the first section, featuring eighth and sixteenth notes. The second staff has a time signature change to 4/4. The piece concludes with a double bar line and a repeat sign (a circle with two dots) at the end of the eighth staff.