

CURCUNA

SÜRE = 4', 24"

♩ = 200

HÜSEYİNİ ŞARKI
(SIRA DAĞLAR MORDU SULAR KIRMIZI)

MUZİK : SELÂHADDİN İCLİ

SÖZ : R.T. BOLUKBAŞI

(Saz -----)

SIL - RA DAĞ - LAR MOR - DU SU - LAR KIR - MI - Zİ

SU - LA - RI BEK - LER - Dİ BİR PE - RI KI - Zİ

Ü - PER - KEN AL - NIN - DAN AK - SAM YIL - DI - Zİ

YE - SİL GÖZ - LE Rİ - NE MEF - TÜN DUR SAN DIM

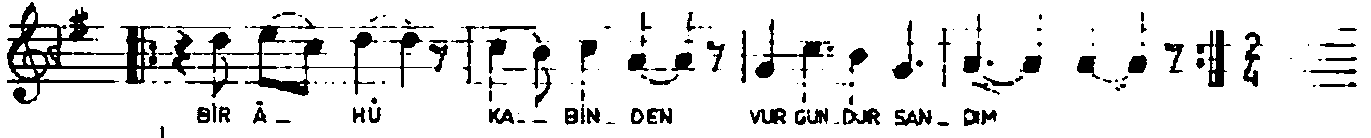
DIM Saz pp pp

SU KE - NAR - LA - RIN DA LÂ - LE - LER VAR - DI

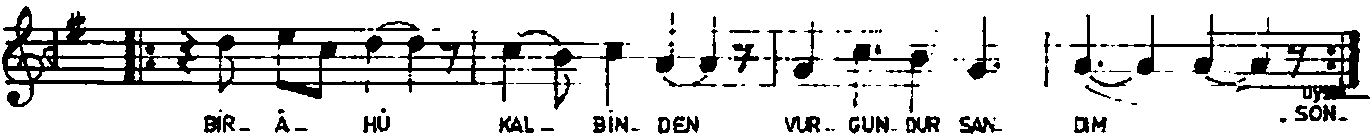
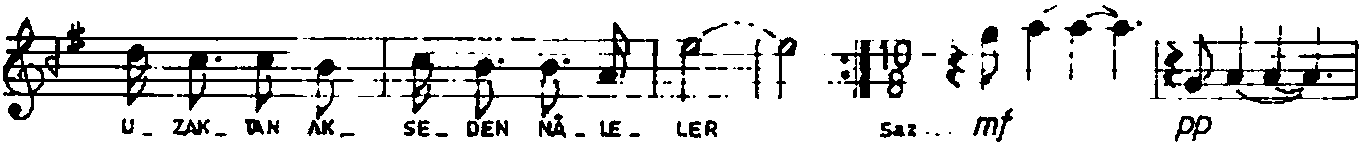
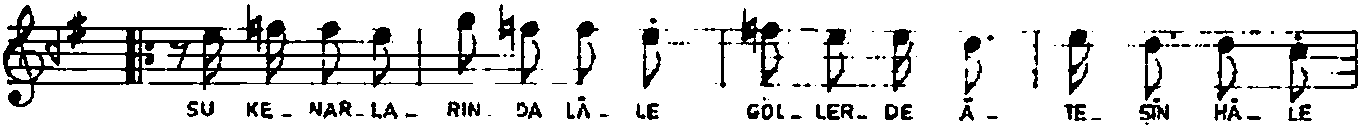
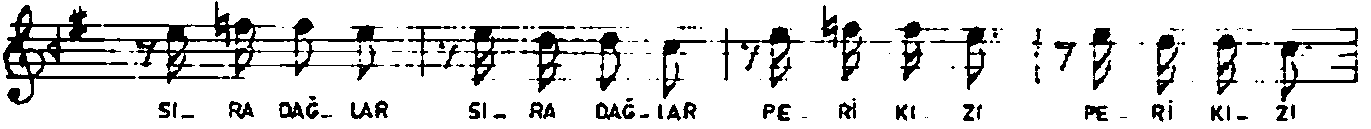
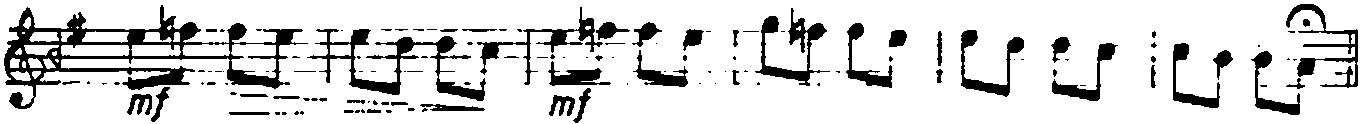
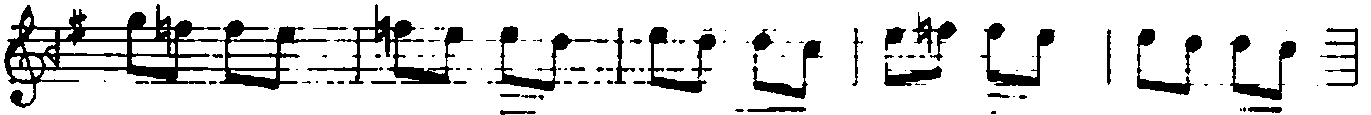
GÖL - ER - DE Â - TE - ŞİN - HÂ - LE - LER VAR - DI

U ZAK - TAN AK - SE DEN NÂ - LE - LER VAR - DI

HUSEYİNİ ŞARKI
(Sıra dağlar mordu sular kırmızı)
(Sahife - 2)



NİM SOFYAN (♩ = 80)



SIRA DAĞLAR MORDU, SULAR KIRMIZI
SULARI BEKLERDİ BİR PERİ KIZI
ÖPERKEN ALNINDAN AKŞAM YILDIZI
YEŞİL GÖZLERİNE MEFTUNDUR SANDIM

SU KENARLARINDA LÂLELER VARDI
GÖLLERDE ATEŞİN HÂLELER VARDI
UZAKTAN AKSEDEN NÂLELER VARDI
BİR AHÜ KALBİNDEN VURGUNDUR SANDIM

Rıza Tevfik Bölükbaşı

Hece = 6 + 5