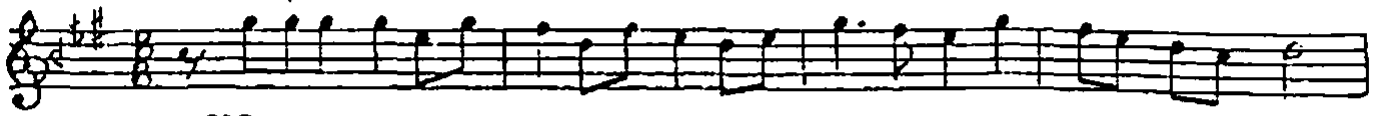


HÜZZAM FANTEZİ  
-BAĞRIMA TAŞ BASHIŞKEN-

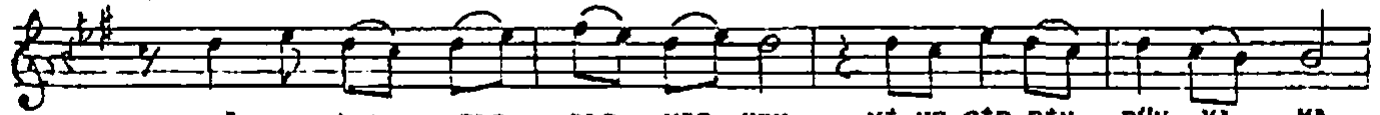
DÜYEK

SÖZ VE MÜZİK:ZEKÂİ TUNCA

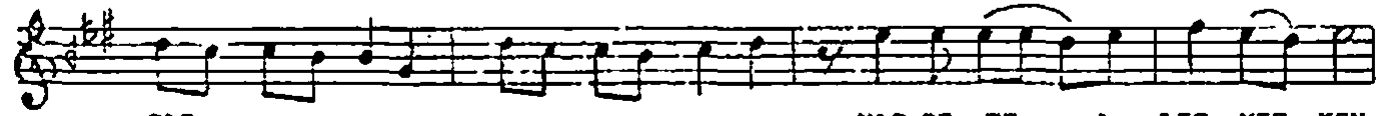
♩ = 160



SAZ---



BAĞ RI 'MA TAŞ BAS MIŞ KEN Yİ NE GİR DİN DÜN YA MA

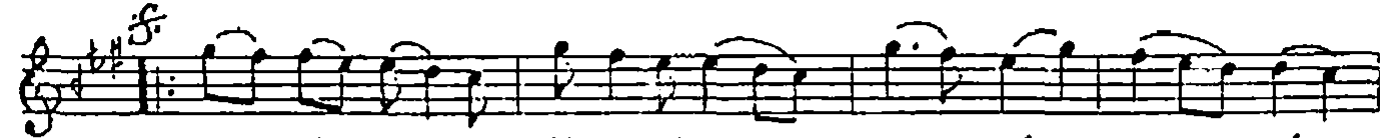


-SAZ---

HAS RE TE A LIŞ MIŞ KEN



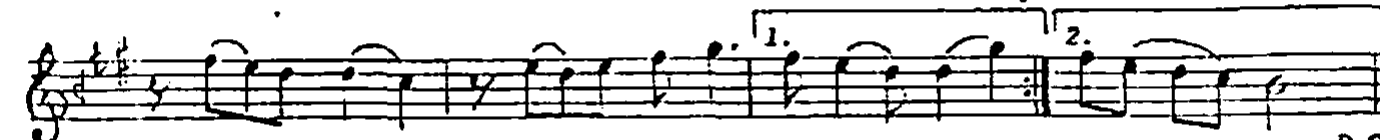
DÜN DÜN ES Kİ SEV DA MA -SAZ-----



PEK BİR ŞEY DE GİŞ HE MIŞ HA LÁ HA LÁ



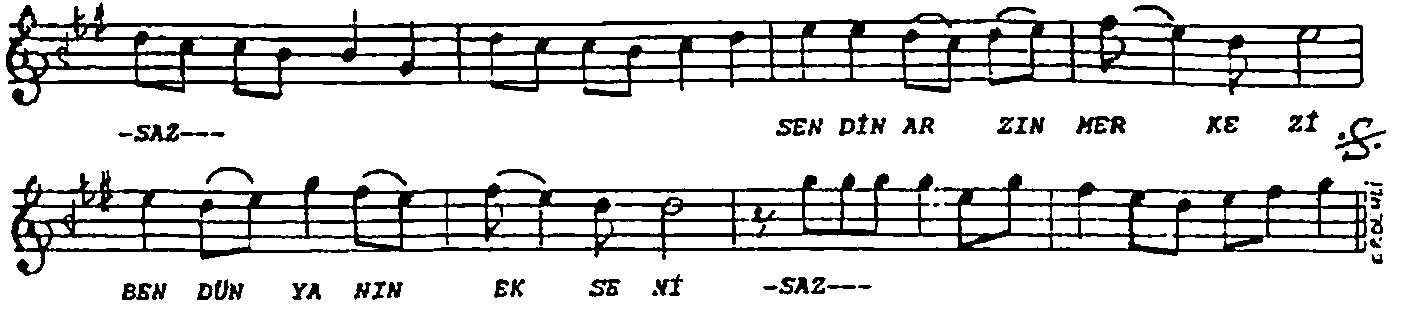
HÁ LA AY NI YER DE SİN AY NI HÁL AY NI Gİ DİŞ SA DE CE



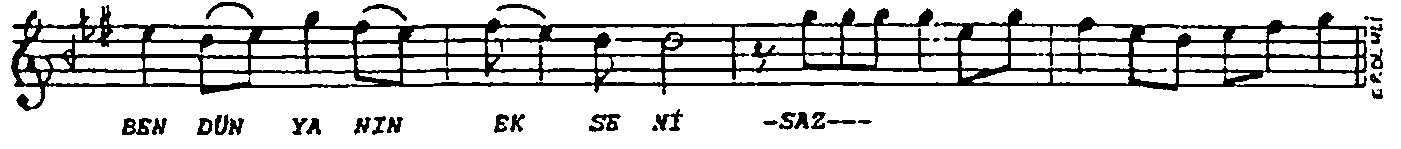
SA DE CE SA; DE CE ÇOK GÜ ZEL SİN GÜ ZEL SİN D.C.



HİÇ AN LA MA DİN BE Nİ AN LA YA MA DİN SE Nİ



-SAZ--- SEN DİN AR ZİN MER KE Zİ



BEN DÜN YA NIN EK SE Nİ -SAZ---

EROL UZUN

BACRIMA TAŞ BASHIŞKEN  
YİNE GİRDİN DÜNYAYA  
HASRETE ALIŞMIŞKEN  
DÖNDÜM ESKİ SEVDAMA

PEK BİRŞEY DEĞİŞEMİŞ  
HALÂ AYNI YERDESİN  
AYNI HÂL, AYNI GİDİŞ  
SADECE ÇOK GÜZELSİN

HİÇ ANLAMADIN BENİ  
ANLAYAMADIM SENİ  
SENDİN ARZİN MERKEZİ  
BEN DÜNYANIN EKSENİ