

## SENGİN SEMAİ

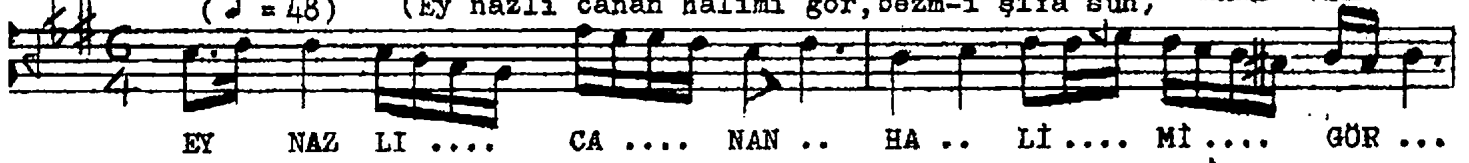
## H Ü Z Z A M Ş A R K I

Güfte ve Beste

(♩ = 48)

(Ey nazlı cânân hâlimi gör, bezm-i şifa sun)

AHMET UZEL



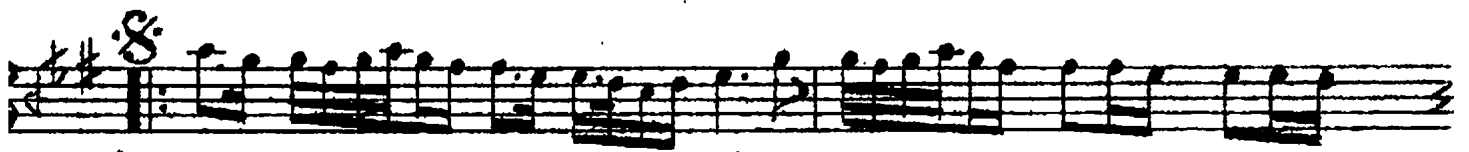
EY NAZ LI .... CA .... NAN .. HA .. LI .... Mİ .... GÖR ...



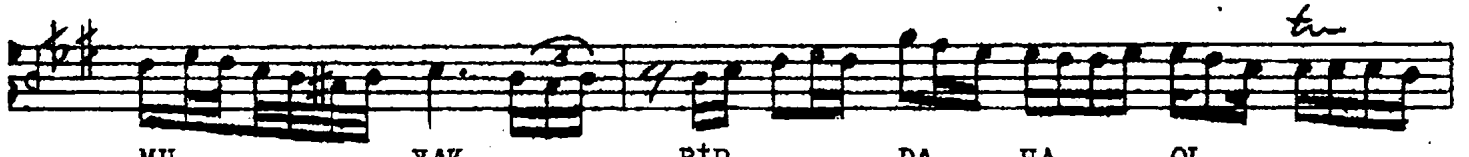
BEZ ..... Mİ .. Şİ .. FA ..... SUN (SAZ .....)



SUN (SAZ .....)



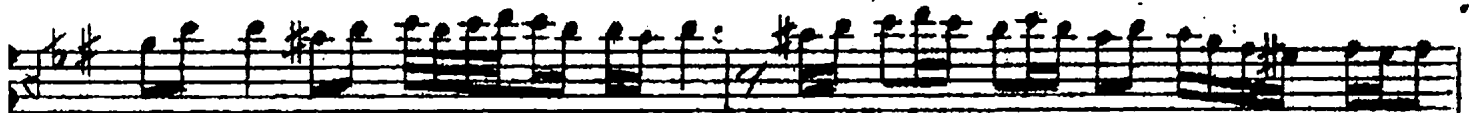
GEL KAL ..... Bİ ME ... GİR RU ..... HU ....



MU ..... YAK ..... BİR ..... DA... HA .... OL ..... tu



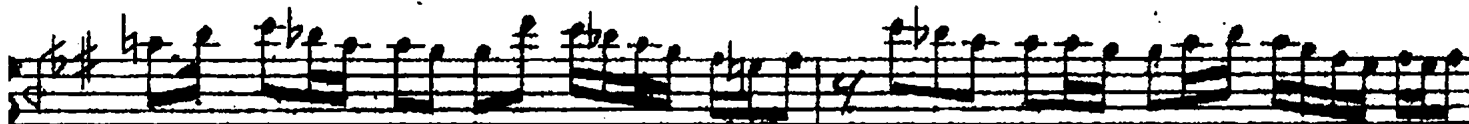
SUN .. (SAZ .....)



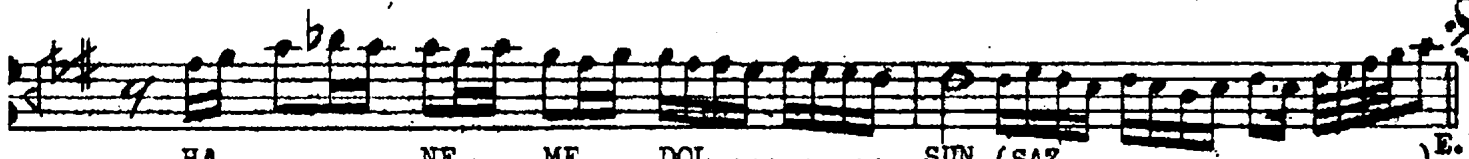
LÜT FET GÜ ZE ..... LİM ... NEŞ ..... E... HA YÂL ..... tu



HA ..... NE ME .. DOL ..... SUN .... (SAZ .....)



LÜT FET .. GÜ ZE LİM ..... NEŞ .. E .... HA ... YAL ..... tu



HA ..... NE .. ME .. DOL ..... SUN (SAZ .....)

E. B.  
 EY NAZLI CÂNÂN HÂLİMİ GÖR, BEZM-İ ŞİFÂ SUN  
 GEL KALBİME GİR, RUHUMU YAK BİR DAHA OLSUN  
 LÜTFET GÜZELİM NEŞ'E HAYALHÂNEME DOLSUN  
 GEL KALBİME GİR, RUHUMU YAK BİR DAHA OLSUN.