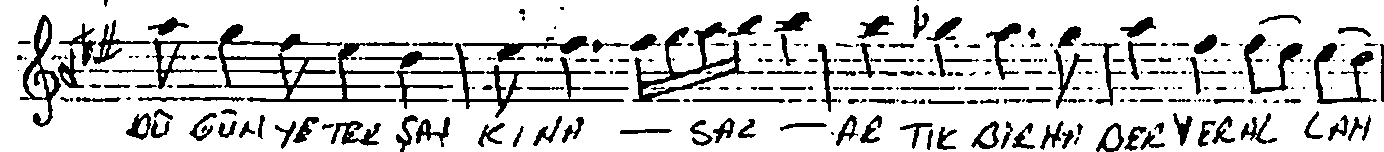
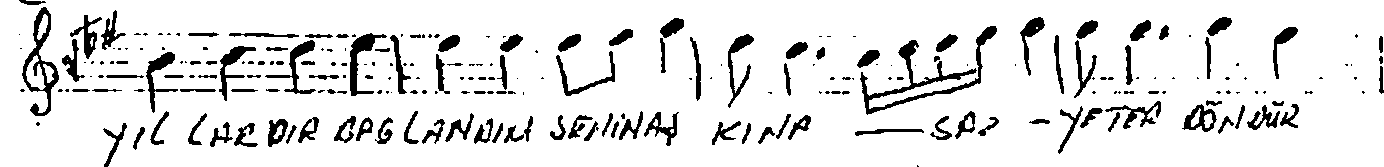
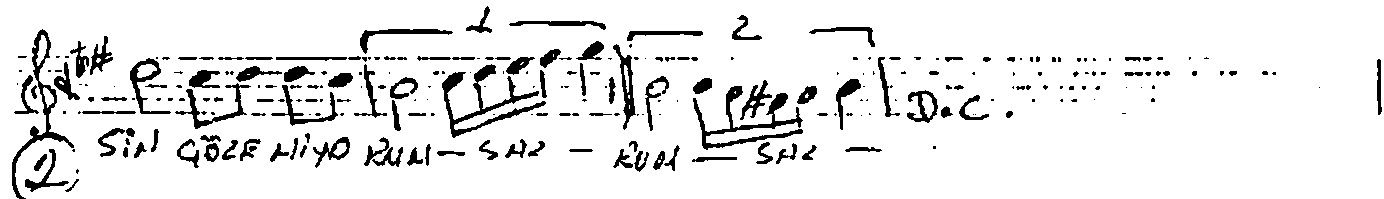
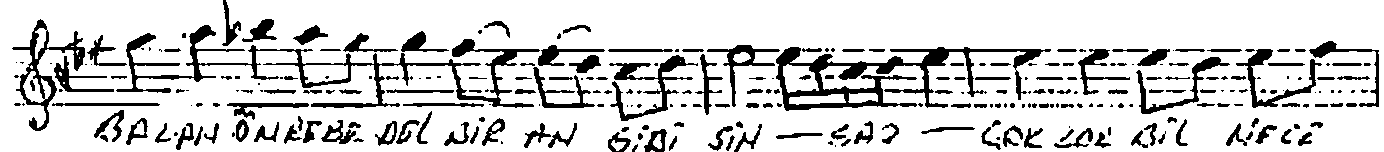
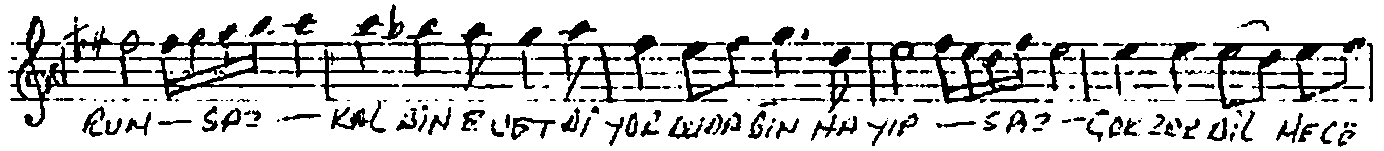
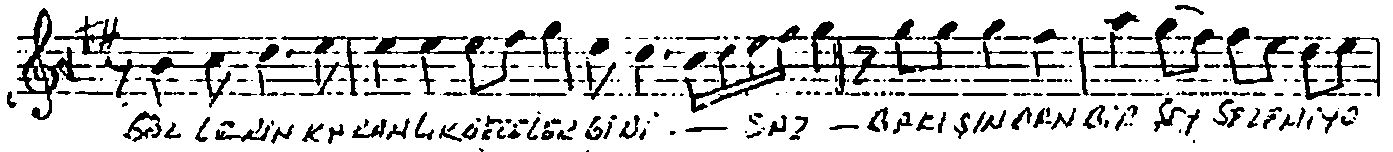
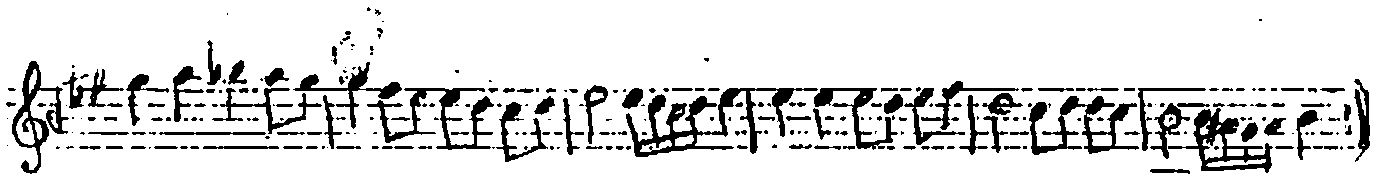


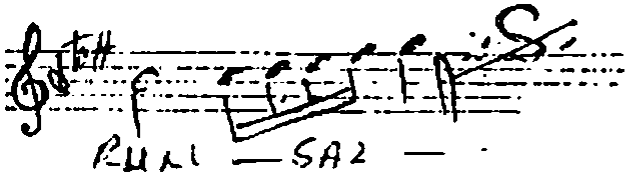
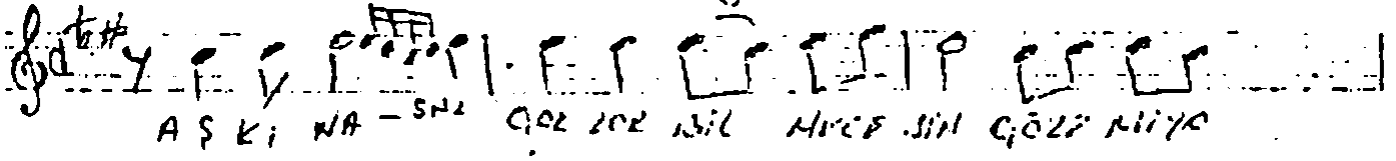
J: 144

Hüzün Şarkı
Gülün kamalet gönder gel.

ACI YENİŞİM
SARIK İZMİR



Hüsnü Paşa
Gecelerin karanlık geceleri gibi



Gecelerin karanlık geceleri gibi
Bakıpından bir şey sezemiyordum
Kaçın evet diyor oluydum diyin
Çok zor bitireceğim çözeceğim
Bazen dost bazenela etiyen gibisin
Bazen her derdimle derman gibisin
Bazen ömür bade e bir an gibisin
Çok zor bitireceğim çözeceğim
Yıllardır bağlanırsun. Senin aşkına
Yeter standırlığın yeter şaşkına
Artık bir haber var Allah aşkına
Çok zor bitireceğim çözeceğim