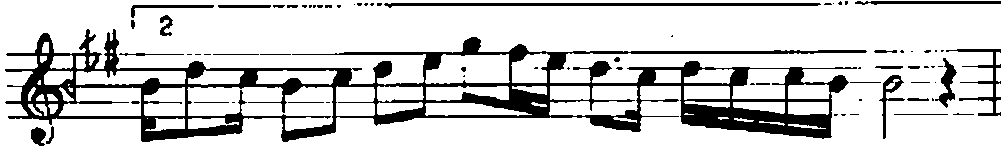
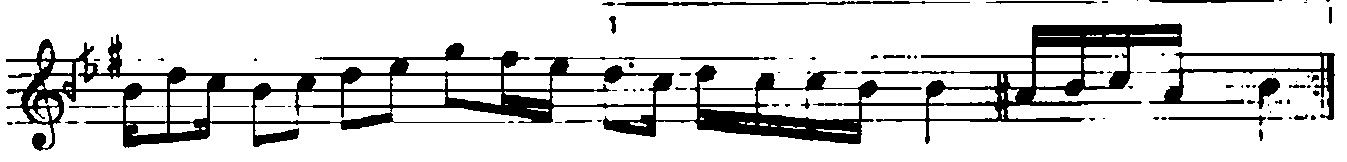


HÜZZAM ŞARKI
EY SABÂH-I HÜSN-Ü ANIN

- 2 -



gençlik

EY SABÂH-I HÜSN-Ü ANIN ÂFİTÂB-I ENVERİ
EY ZARÂFET BAĞININ ŞEN BÜLBÜLÜ NAZİK-TERİ
YOKKEN ASLA GÖNLÜMÜN KALB-I LÂTİFİNDE YERİ
BEN BU HÂLİMLE NE SEVDİM SEN GİBİ BİR DİLBERİ