

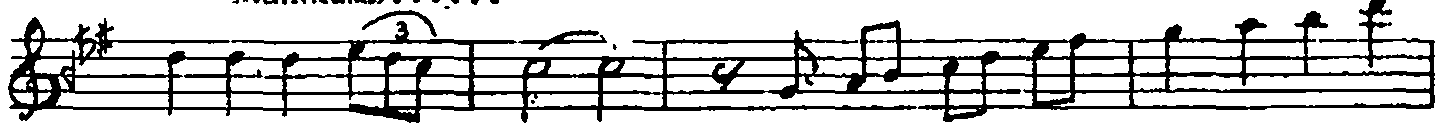
DÜYEK

HÜZZAM ŞARKI  
(KADIN BİR GÜL AŞK BİR MEVSİM)

BESTE:  
SELAHATTİN İNAL



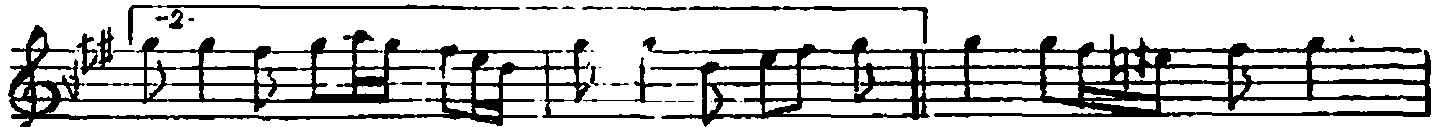
ARANAGME.....



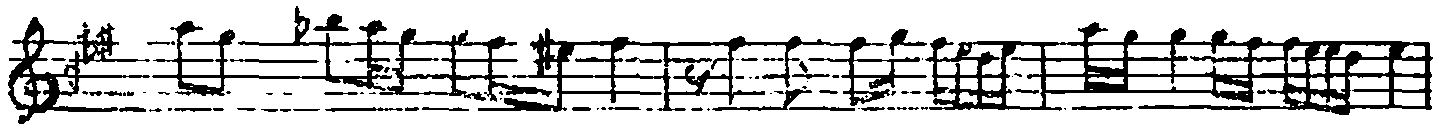
KA DIN... BİR GÜL AŞK BİR MEV SİM TEZ GE ÇER KAN



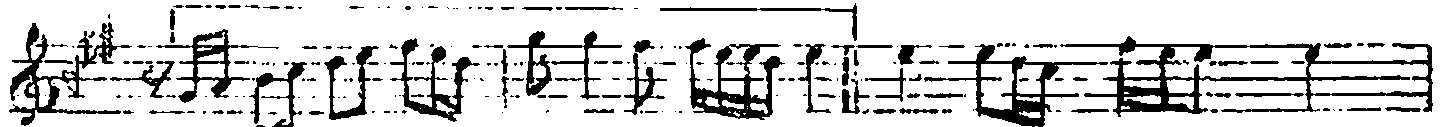
MA YA..... DEĞ MEZ (Söz.....)



(Söz.....) LEY LA..... O TOR



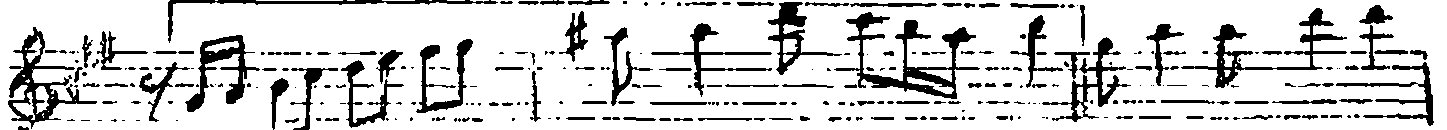
HER ME Nİ NA BİR ME LİK SAN MA YA..... DEĞ MEZ



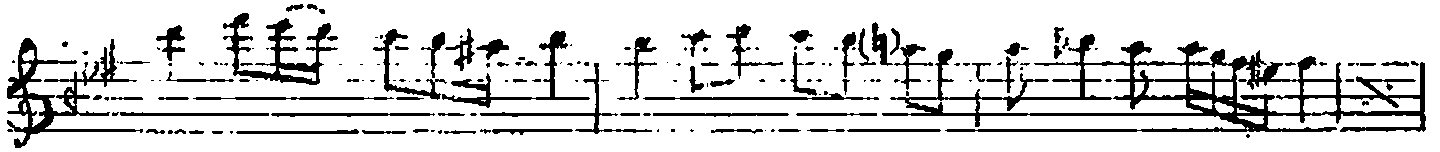
(Söz.....) LEY LA O TOR.....



HER MEÇ Nİ N... BİR ME LİK SAN MA YA..... DEĞ MEZ



(Söz.....) O NOT O NİŞ...



... TU ĞU YER İBE..... A DI N AN..... MA YA.. DEĞ MEZ



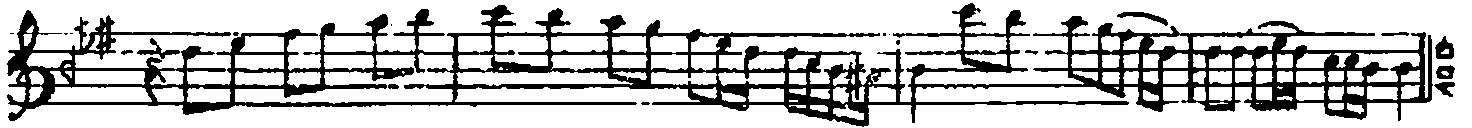
AH..... A DI N AN MA YA..... DEĞ MEZ



(Saz.....)YA SER.. HOŞ KAL



YA RÛ.... YA DA..... HA YATU YAN ma ya..... DEĞ MEZ



YA SER HOŞ KAL YA RÛ... YA DA..... HA YATU YAN MA YA İBĞ MEZ

KADIN BİR GÜL AŞK BİR MEVSİM TEZ GEÇER KANMAYA DEĞMEZ,  
LEYLA OLUR İLER MUCNUNA BİR MİLLEK SANMAYA DEĞMEZ,  
UNUT UNUTTUĞU YERDE ADINI ANMAYA DEĞMEZ  
YA SER HOŞ KAL YA RÛYADA HAYAT, OYANMAYA DEĞMEZ