

HÜSEYİNİ

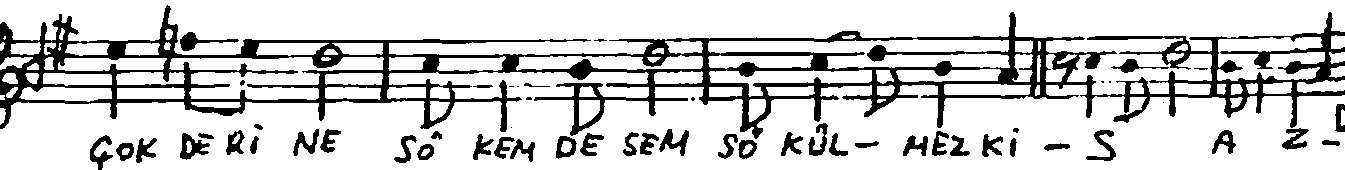
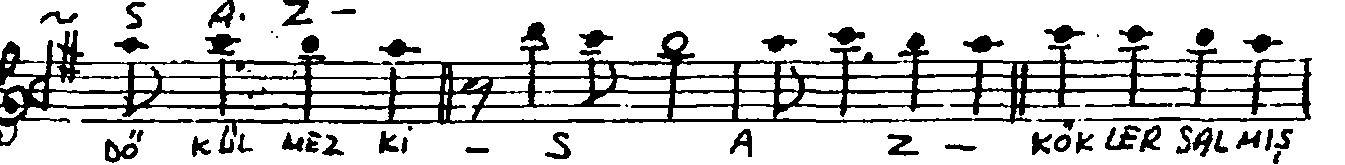
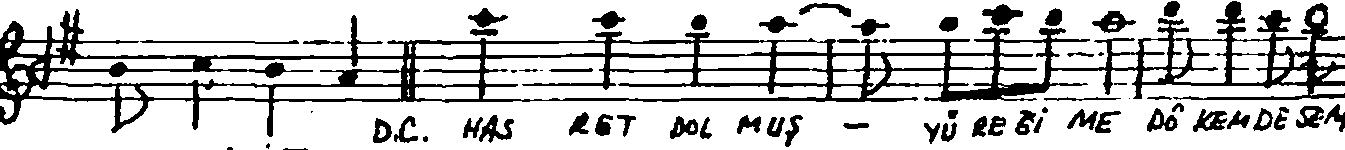
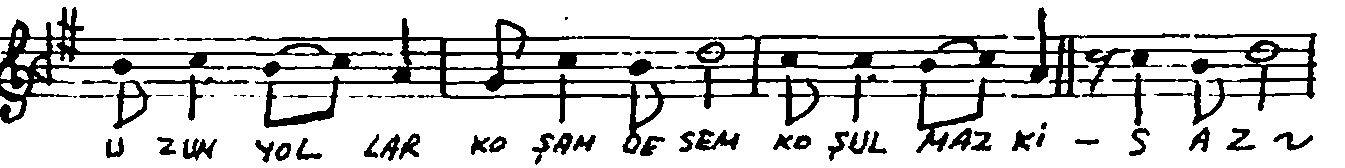
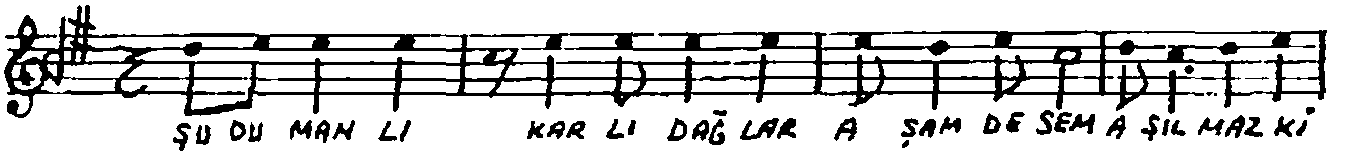
DÜYEK

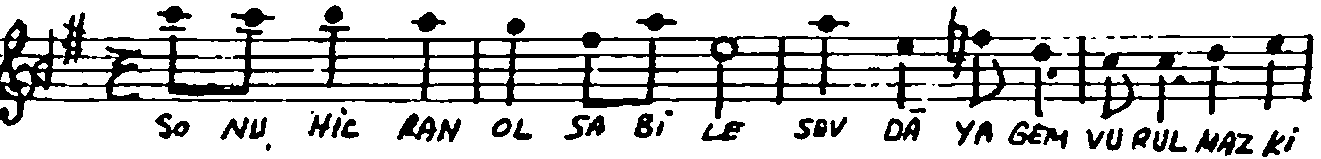
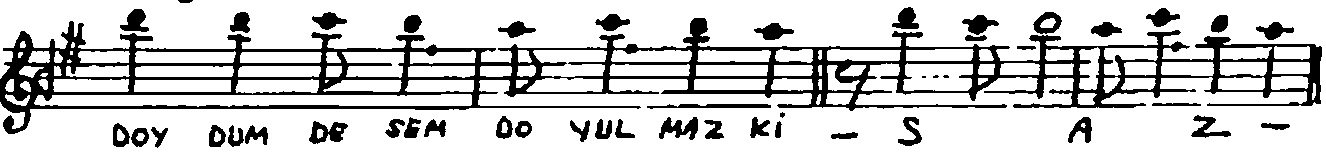
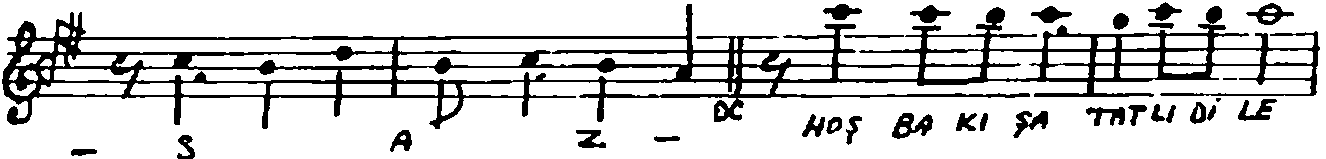
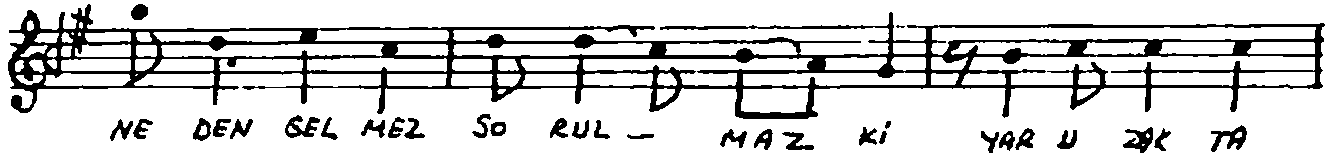
$\text{♩} = 224$

- Şu Dumanlı, Karlı Dağlar -

Muzik: İlgin Soysev

Söz: Dr. Eyüp Göksu





SO DUMANLI KARLI DAĞLAR AŞAMASEM AŞILMAZKI  
YARE BİDEN UZUN YOLLAR KASABİ DESEM KOSULMAZKI  
AKŞET DOLAN YURĞİNE, BÖKEM DESEM BÖRÜLMƏZKİ  
KÖKLER SALMIŞ ÇOK DERİNE, SÖKEM DESEM SÖKÜLMƏZKİ  
GÖZYAŞLARIM \*SELLER GİBİ, AKAR \*GÖER DURULMAZKİ  
YAR UZAKTA ELLER GİBİ, NEDEN GELMEZ SORULMAZKİ  
HOŞ BAKIŞA TATLI DİLE, DOYDUM DESEM DOYULMAZKİ  
SONU HİCRAN OLSA BİLE, SEVDAYA GEM VU RULMAZKİ