

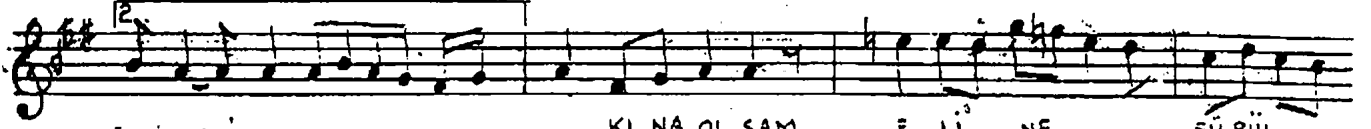
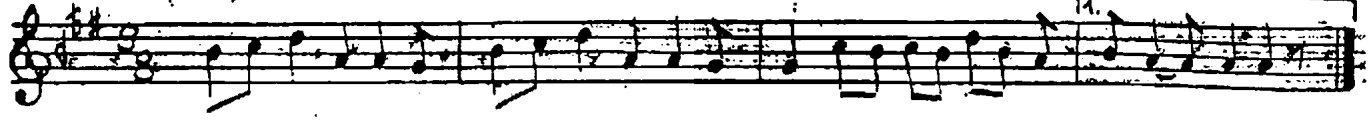
KARCIĞAR ŞARKI
KINA OLSAM ELİNE SÜRÜLSEM GELİN

AKSAK

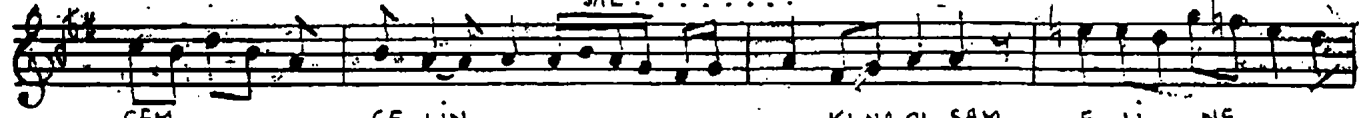
♩ : 288

ARANAĞME

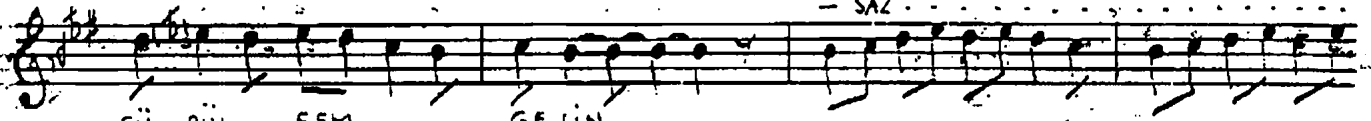
MÜZİK : L'Dİ, MEHMET



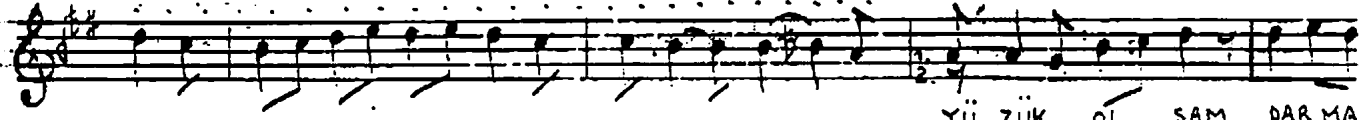
KI NA OL SAM E LI NE SÜ RÜ L
KE MER OL SAM BE LI NE SA RIL



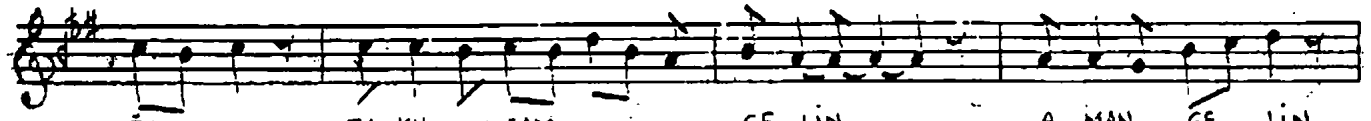
SEM GE LIN KINA OL SAM E LI NE
SAM GE LIN KE MER OL SAM BE LI NE



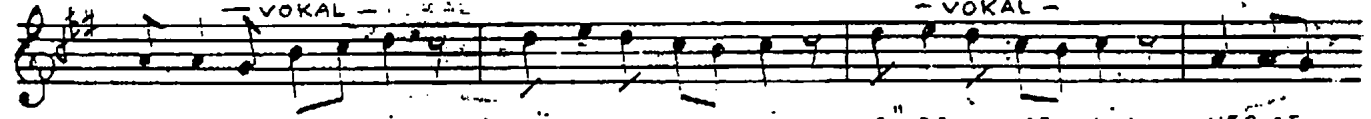
SÜ RÜ L SEM GE LIN
SA RIL SAM GE LIN



YÜ ZÜ K OL SAM PAR MA
İN CI OL SAM BO YUN U



GA TA KIL SAM GE LIN A MAN GE LIN
NA DO LAN SAM GE LIN



A MAN GE LIN CE GÜ ZEL GE LIN GÜ ZEL GE LIN HER GE



CE BEK LE RİM YO LUN VAY ŞI KIR ŞI KIR ŞI KIR :DAK



Fİ KIR Fİ KIR Fİ KIR :DAK A MAN NE GÜ ZEL GE LIN D.C

FERİT SİĞAL DİAKTAN NOTAYA ALMIŞTIR

z:

z:

KINA OLSAM ELİNE SÜRÜLSEM GELİN KEMER OLSAM BELİNE SARIL SAM GELİN
YÜZÜK OLSAM PARMAĞA TAKILSAM GELİN İNCİ OLSAM BOYUNUNA DOLANSAM GELİN

AMAN GELİN GÜZEL GELİN
HER GECE BEKLERİM YOLUN " VAY,
ŞIKIR ŞIKIR ŞIKIRDAK, FIKIR FIKIR FIKIRDAK
AMAN NE GÜZEL GELİN