

♩ : 216



( A R A N A Ğ M E ..... )



GA MI KE DE Rİ BI RAK ( s a z ) GÖ NÜ L DEN



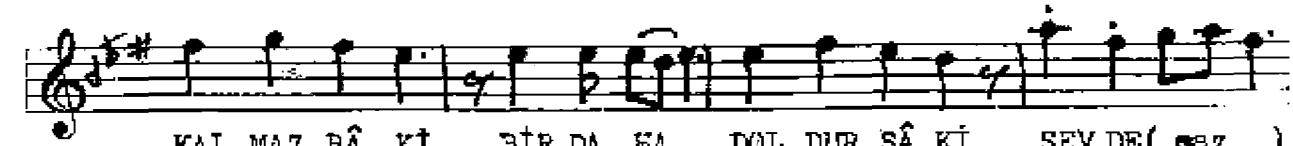
GÖ NÜ LE AK ( saz ) DÜ Ş ME DEN SA ÇI NA AK



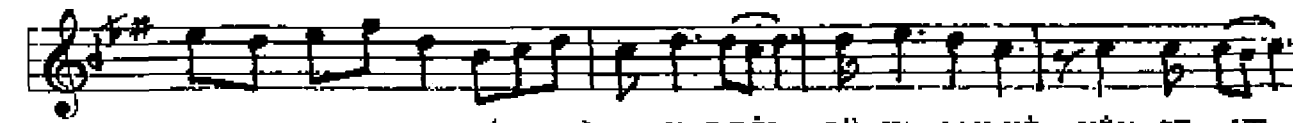
SEV DE ( saz ) YA ŞA MAYA BAK ( SAZ----- )



----- ) HA YAT BİR RÜ YA SAN Kİ KİM SE YE



KAL MAZ BÂ Kİ BİR DA HA DOL DUR SÂ Kİ SEV DE ( saz )



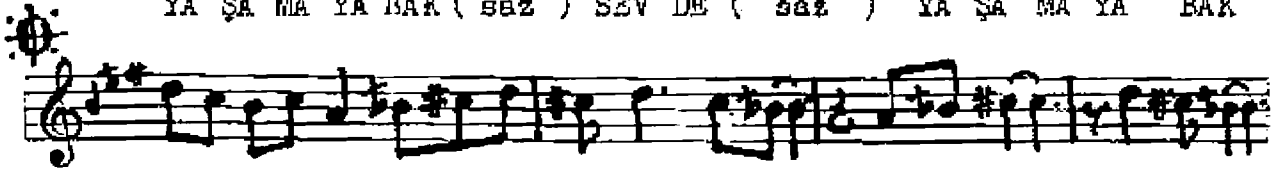
YA ŞA NA YA BAK ( saz ) HA YAT BİR RÜ YA SAN Kİ KİM SE YE



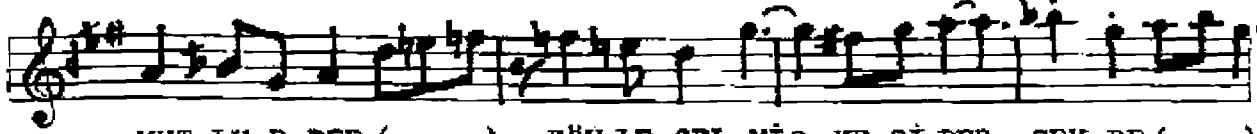
KAL MAZ BÂ Kİ BİR DA HA DOL DUR SÂ Kİ SEV DE ( saz )



YA ŞA MA YA BAK ( saz ) SEV DE ( saz ) YA ŞA MA YA BAK



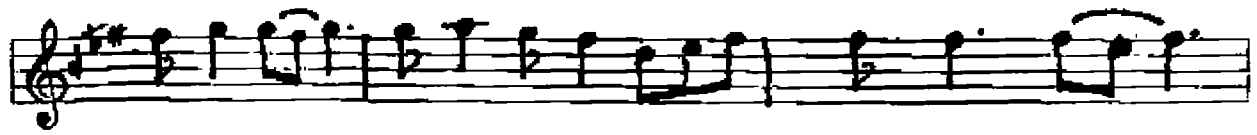
..... ) NE DERT A CI NE KE DER İN SA NI



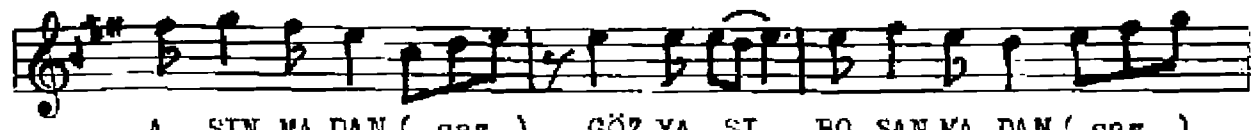
MUT LU E DER ( saz ) BÖY LE GEL MİŞ VE Gİ DER SEV DE ( saz )



YA ŞA MA YA BAK ( ----- S A Z ----- )



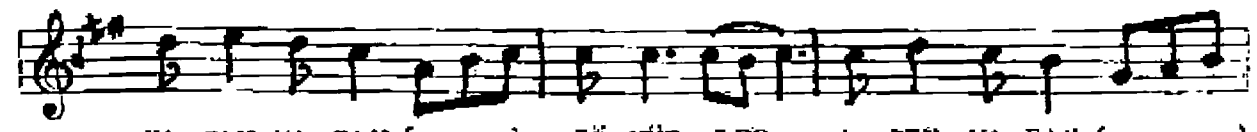
Ö MÜR LER YA ŞAN MA DAN ( saz ) GÖ NÜL LER



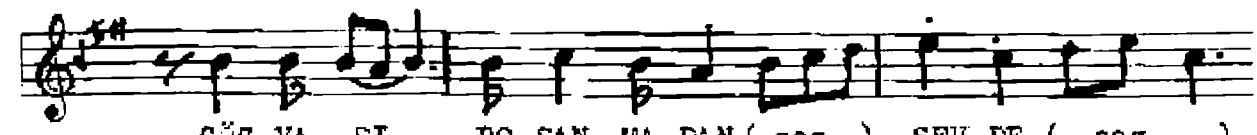
A ŞIN MA DAN ( saz ) GÖZ YA ŞI BO ŞAN MA DAN ( saz )



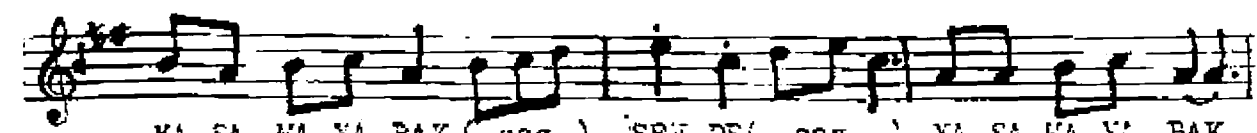
SEV DE ( saz ) YA ŞA MA YA BAK ( saz ) Ö MÜR LER



YA ŞAN MA DAN ( saz ) GÖ NÜL LER A ŞIN MA DAN ( saz )



GÖZ YA ŞI BO ŞAN MA DAN ( saz ) SEV DE ( saz )



YA ŞA MA YA BAK ( saz ) SEV DE ( saz ) YA ŞA MA YA BAK ( saz )