

KARCIĞAR KEREM

ÂN U ZÂRE DÜŞTİM

ÜSÛDÜ DE VRI HÂDİ

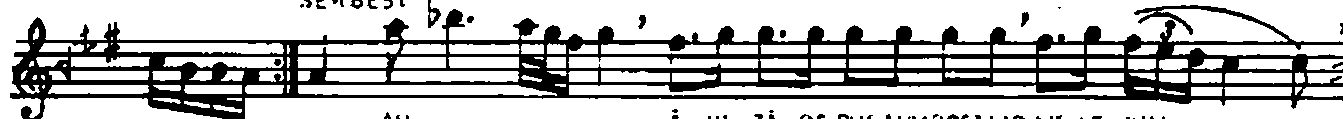
♩:124



GİRİŞ ARANAĞMESİ



SERBESİ



AH

Â Hİ ZÂ RE DÜŞTİM DOSTI AR NIS LE YİM

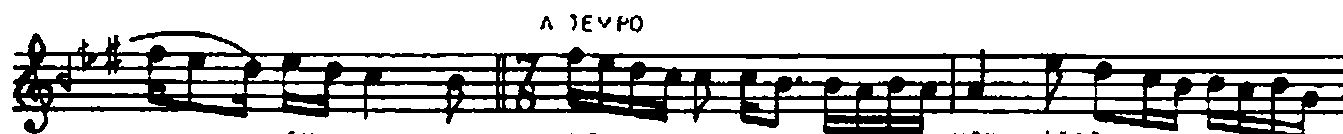


KİM SİM YOK KI DE LİP CA NA SA RİL SİN MER Dİ MİN DER MA Nİ



GİT İ NEY LE YİM

GAY Rİ GÖ NÜL NE LOK MA NA SA RİL



A TEMPO

SİN

HEY

HEY (SAZ



DER Dİ MİN DER MA Nİ GİT DE NEY LE YİM



(SAZ

GAY Rİ GÖ NÜL NE LOK MA NA SA

The image shows a musical score for a song. It consists of three staves of music. The first staff has lyrics written below it: "RİL SIN HEY HEY (SAZ)". The second and third staves are empty of lyrics. The music is written in a single system with a treble clef and a key signature of one sharp (F#). The first staff begins with a treble clef, a key signature of one sharp, and a common time signature. The melody is written in a single line with a treble clef. The lyrics are written below the notes. The second and third staves are empty of lyrics. The music is written in a single system with a treble clef and a key signature of one sharp. The first staff has lyrics written below it: "RİL SIN HEY HEY (SAZ)". The second and third staves are empty of lyrics.

ÂH U ZÂRE DÜŞTUM DOSTLAR NİŞLEYİM
KİMSEM YOK KI GELİP ÇANA SARILSIN
DERTİMİN DERMANI SİTİ NEYLEYİM
GAYRİ GÖNÜL NE LOKMAN'A SARILSİN