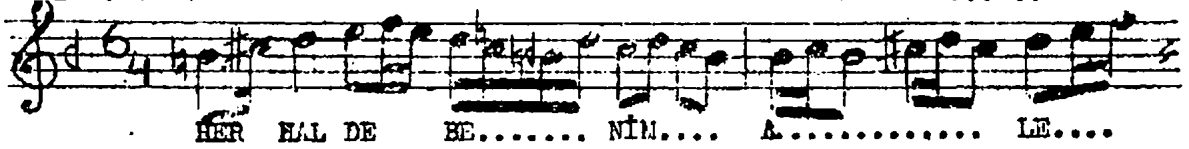


Herhaldo benim öleme gelmekte vebâlim  
Sengin Semâî

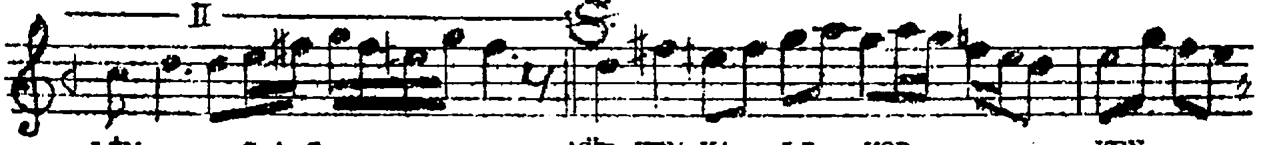
Büfte  
Beste ve: HALUK RECAİ



HER HAL DE BE..... NİM..... A..... LE....



ME.... GEL MEK.... TE VE BA..... LİM.. - S A Z - - -



LİM.. - S A Z - - - - - MÜP HEM KA LI YOR..... KEN.....  
SÖN MEK TE ŞE BA..... BİL.....



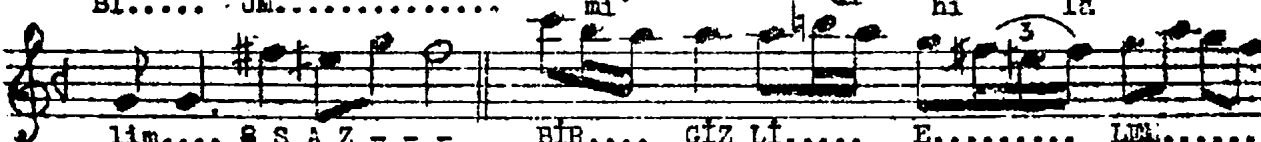
Dİ ME... ES..... RA..... RI ME LA..... LİM..  
Gİ Bİ... UM..... Lİ..... Dİ Hİ LA..... LİM....



- S A Z - - - - - MÜP HEM KA LI YOR..... KEN..... Dİ  
SÖN MEK TE ŞE BA..... BİL..... Gİ



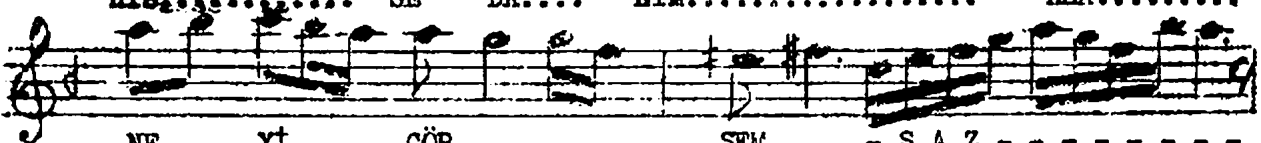
ME.... ES.....  
Bİ..... UM.....



LİM... S S A Z - - - BİR.... GİZ Lİ.... E..... LİM.....  
LİM... - S A Z - - -



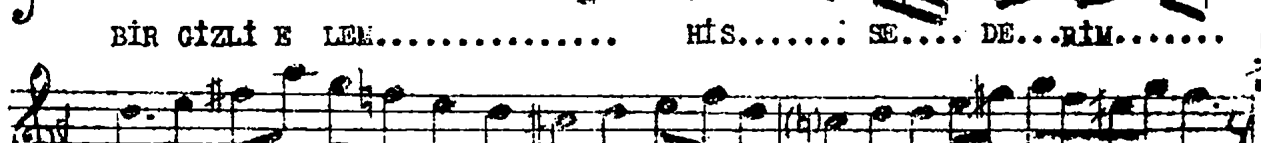
HİS..... SE DA.... BİL..... HER.....



NE.. Yİ.... GÖR..... SEM.... - S A Z - - -



BİR GİZLİ E LİM..... HİS..... SE.... DE... RİM.....



HER..... NE.. Yİ.. GÖR..... SEM.. - S A Z - - - ÜMİHY

Herhaldo benim öleme gelmekte vebâlim  
Müphem kalıyor kendime cefâri melâlim  
Bir gizli elem hisseddim her neye görsen  
Sönmekte şebabım gibîümüd-i hilâlim