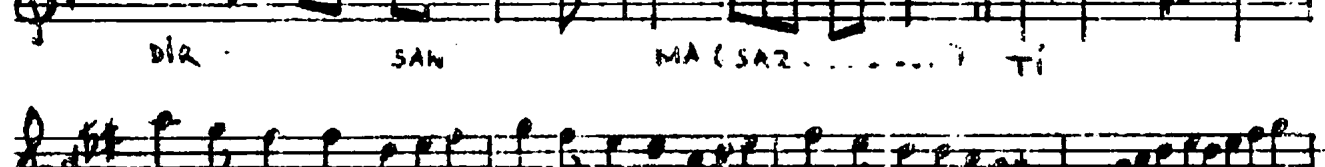
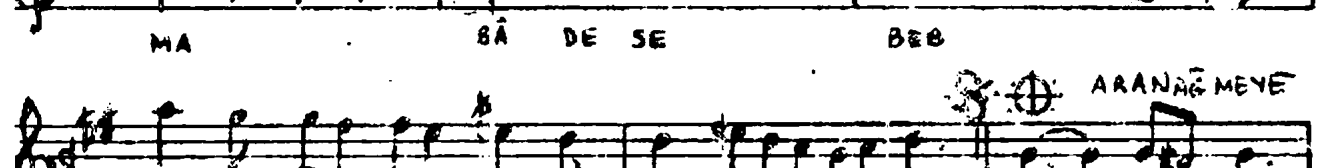
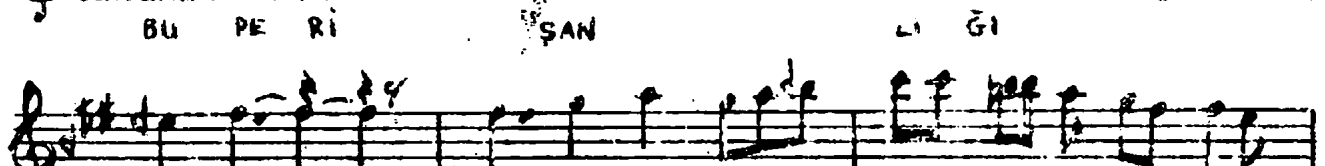
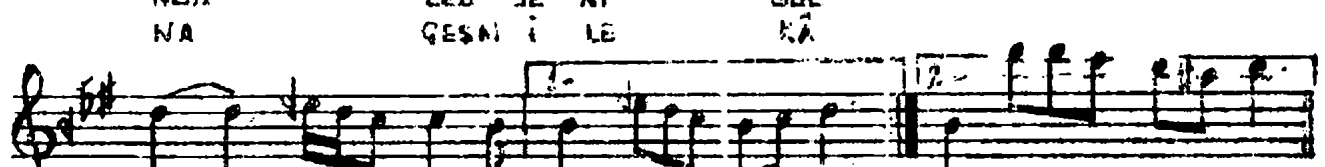
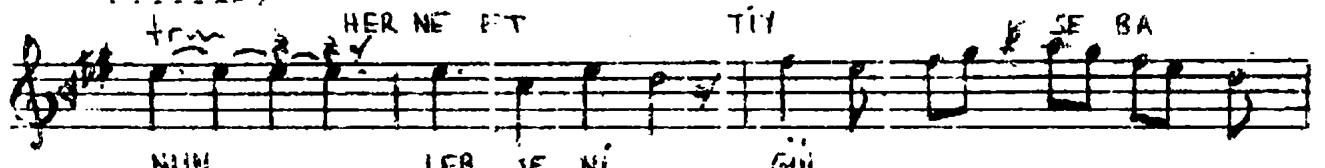
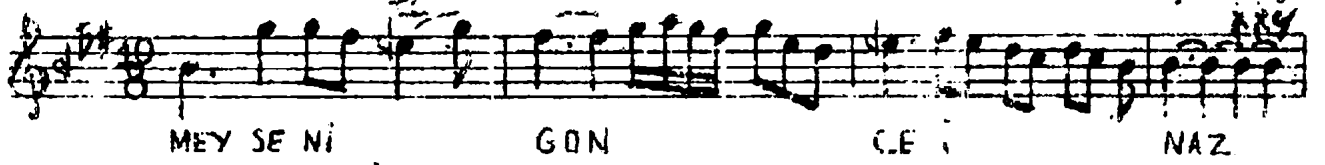


HÜZZAM ÇARKI
(MEY SENİ, GONCE-İ NAZ, AÇTI DA BÜLBÜL MESTİ) Güfte: Mustafa
Beste: BİMER
Reşid Key



İç, açıl, gül beni handan ile mestî-kâm et
Bir tebessüm ile her emrine kalb-i ram et
Atıl âuşuma da zevk-î bahârî tâm et
Gül, beni bak, gülüşün bir dil-î bülbül etti