

KÜRDÎ ŞARKI

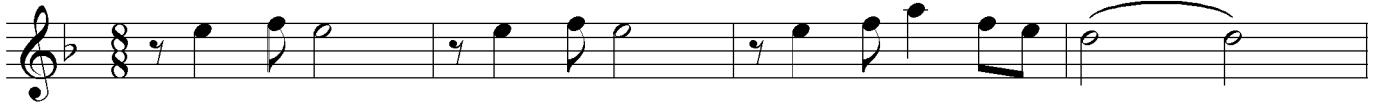
USÛLÜ : DÜYEK

SEVGİMİZİ ANLATAN SÖZLERİN BENDE KALSIN

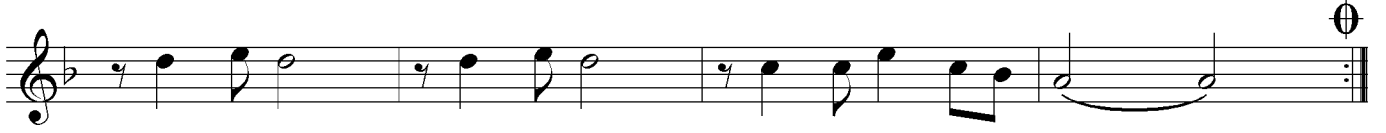
♩ = 200

MÜZİK : PINAR KÖKSAL

SÖZ : MEHMET ALTINKÖPRÜ



ARANAĞME



SEV Gİ Mİ Zİ AN LA TAN

SÖZ LE RİN

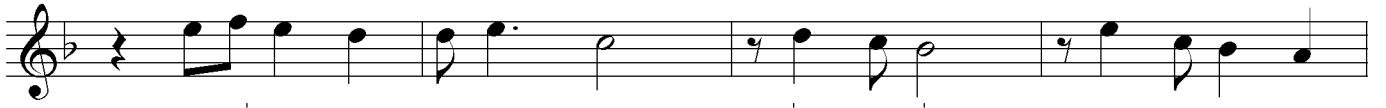
BEN DEKAL SIN



BE Nİ SAR SAN YÜ CEL TEN

İZ LE RİN

BEN DEKAL SIN



BE Nİ SAR SAN YÜ CEL TEN

İZ LE RİN

BEN DEKAL SIN



(SAZ

)



SICAK BAKIŞ LA RİN DA

E Rİ MEK YE TER BA NA



Gİ DER SEN

GE CE REN Gİ

GÖZ LE RİN

BEN DE KAL SIN

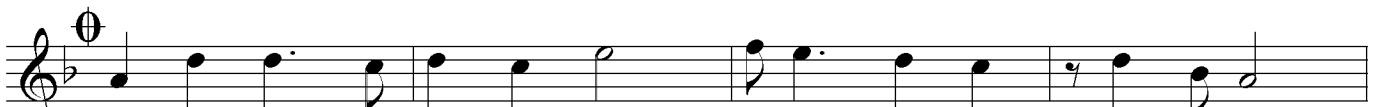


Gİ DER SEN

GE CE REN Gİ

GÖZ LE RİN

BEN DEKAL SIND.C.



SEV DÂ YA Gİ DEN YOL DA

I ŞIK TAN BİR

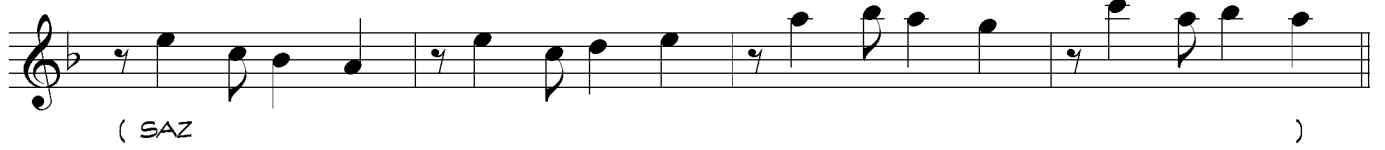
GÖL GE SİN



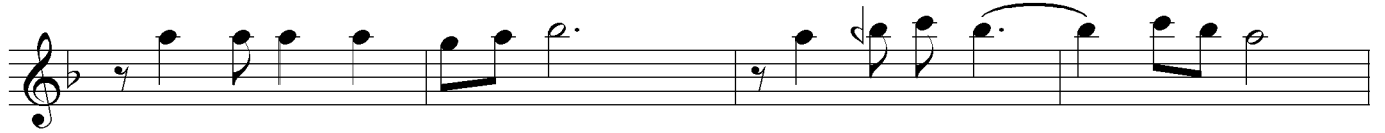
RÛ HU MA SİN MİŞ SE NİN REN GİN KO KUN NE FE SİN



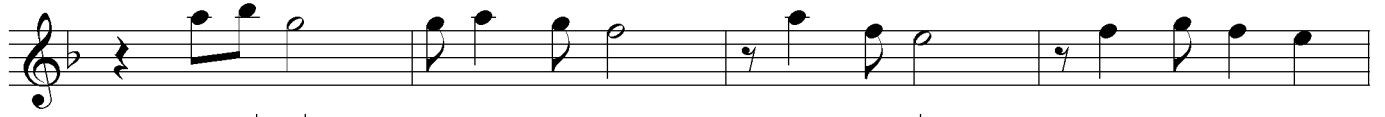
RÛ HU MA SİN MİŞ SE NİN REN GİN KO KUN NE FE SİN



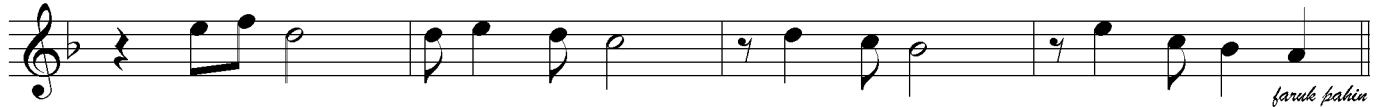
(SAZ)



AY RI LİK ŞAR KI SI NI SÖY LE YE CEK SE SE SİN



TE Nİ Mİ TUTUŞ TU RAN KÖZ LE RİN BEN DE KAL SİN



TE Nİ Mİ TUTUŞ TU RAN KÖZ LE RİN BEN DE KAL SİN
(SON)

faruk bakin

SEVGİMİZİ ANLATAN SÖZLERİN BENDE KALSIN
BENİ SARSAN, YÜCELTEN İZLERİN BENDE KALSIN
SICAK BAKIŞLARINDA ERİMEK YETER BANA
GİDERSEN, GECE RENGİ GÖZLERİN BENDE KALSIN

SEVDÂYA GİDEN YOLDA IŞIKTAN BİR GÖLGESİN
RÛHUMA SİNMIŞ SENİN RENGİN KOKUN NEFESİN
AYRILIK ŞARKISINI SÖYLEYECEKSE SESİN
TENİMİ TUTUŞTURAN KÖZLERİN BENDE KALSIN.