

## KÜRDÎ ŞARKI

USÛLÜ : SEMÂİ

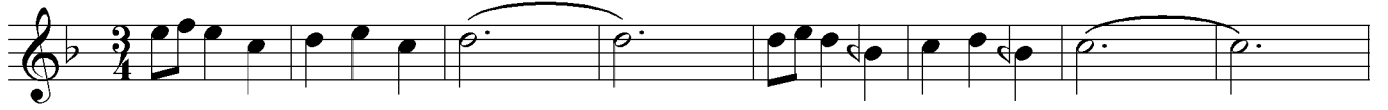
SÖYLER MİSİN BANA

(AŞKIN RENGİ)

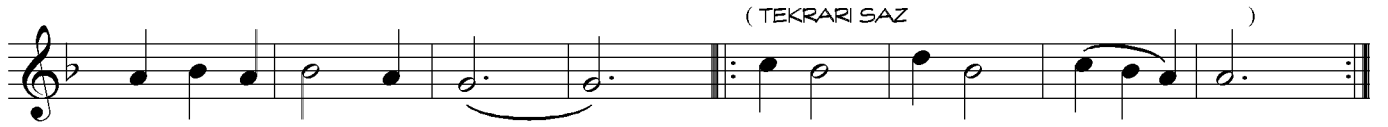
MÜZİK : PINAR KÖKSAL

SÖZ : NÂCİ ÜNVER

♩ = 144

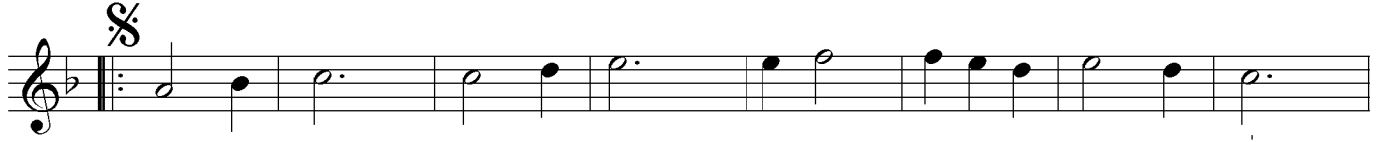


ARANAĞME



SÖYLER MİSİN BANA

NE DİR AŞKIN RENGİ



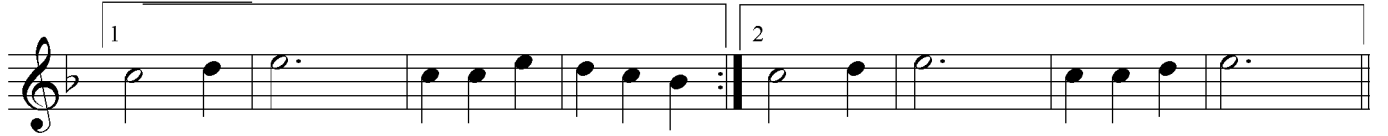
PEM BE MOR

KIR MI ZI

ALEV

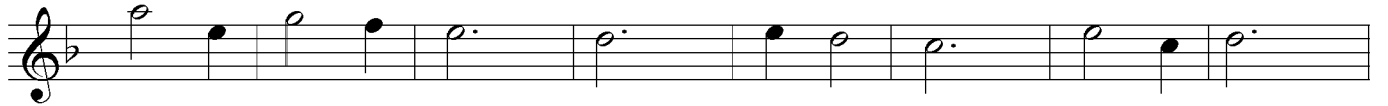
SARI SI

AK DE NİZ



MÂ Vİ Sİ (SAZ )

MÂ Vİ Sİ (SAZ )



HAY Dİ

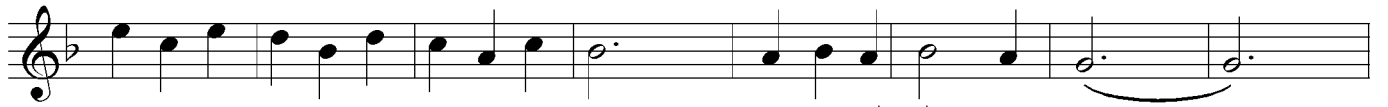
ŞİM Dİ

SÖY

LE

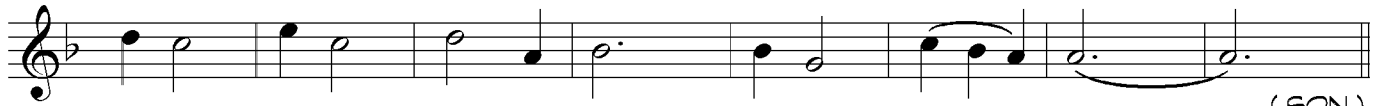
BUN LAR DAN

HAN Gİ Sİ



(SAZ )

SÖYLER MİSİN BANA



NE DİR

NE DİR

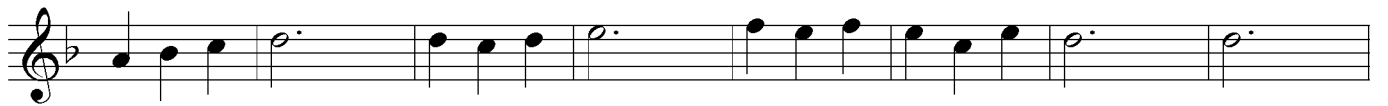
BEN DE Kİ

AŞKIN

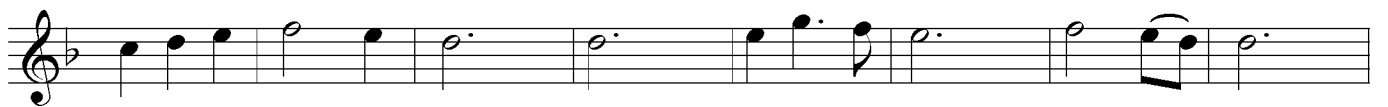
REN

Gİ

(SON)



(SAZ )



SA YA Bİ

LİR

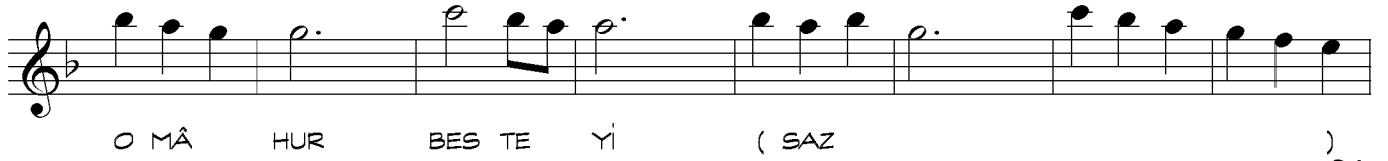
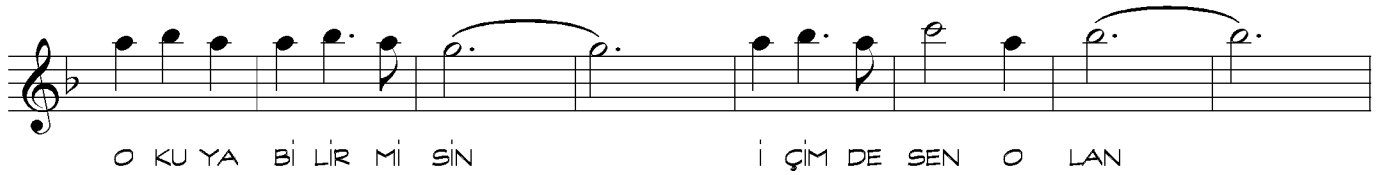
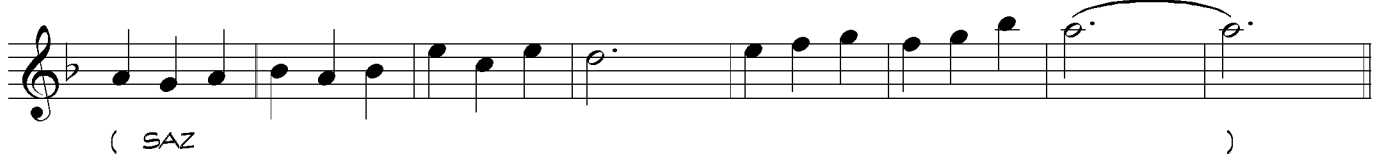
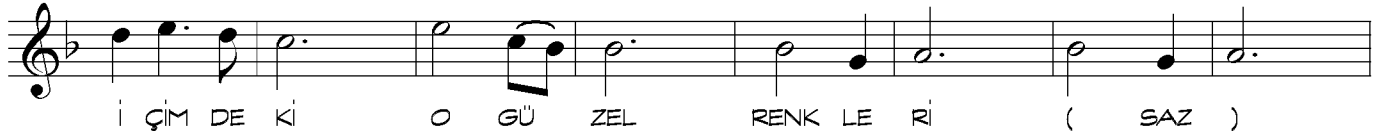
Mİ

SİN

İ ÇİM DE Kİ

O

GÜ ZEL



faruk bakır

SÖYLER MİSİN BANA,  
NEDİR AŞKIN RENGİ ?  
PEMBE, MOR, KIRMIZI,  
ALEV SARISI, AKDENİZ MÂVİSİ,  
HAYDİ ŞİMDİ SÖYLE,  
BUNLARDAN HANGİSİ ?

SÖYLER MİSİN BANA,  
NEDİR BENDEKİ AŞKIN RENGİ ?  
SAYABİLİR MİSİN İÇİMDEKİ,  
O GÜZEL RENKLERİ,  
OKUYABİLİR MİSİN,  
İÇİNDE SEN OLAN,  
O MÂHUR BESTEYİ.  
SÖYLER MİSİN BANA,  
NEDİR AŞKIN RENGİ ?