



RİM (SAZ-



YÜ RÜ DİL BİR YÜ



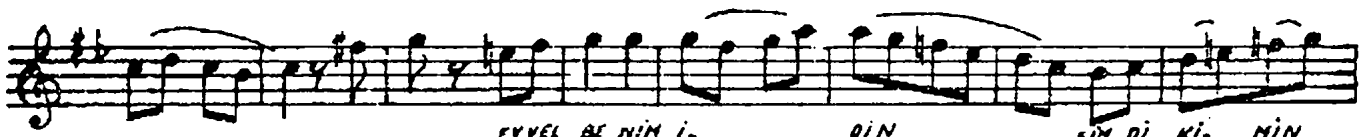
RÜ SA GIN SÜ- RÜN- SÜN A- MAN (SAZ-



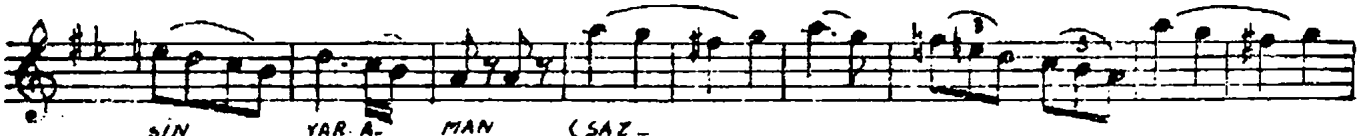
KALDIR NİKA- BI- Nİ YÜ TÜN



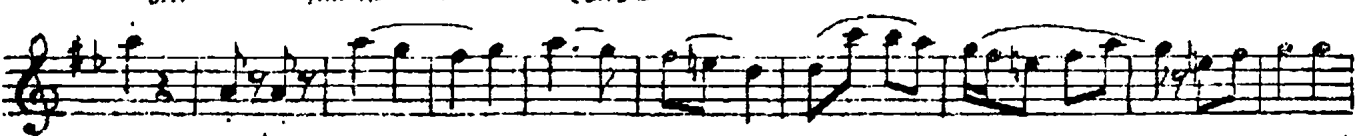
GÖ- RÜN- SÜN A- MAN (SAZ-



EYVEL BE NİN İ- DİN ŞİM Dİ Kİ- NİN



SİN YAR A- MAN (SAZ-



AKI- BETBU



HA- LE DU ŞÜR DÜN BE Nİ YAR A-